

PCDHB3 Antibody (N-term)
Affinity Purified Rabbit Polyclonal Antibody (Pab)
Catalog # AP12159a

Specification

PCDHB3 Antibody (N-term) - Product Information

Application	IF, IHC-P, WB,E
Primary Accession	O9Y5E6
Other Accession	NP_061760.1
Reactivity	Human
Host	Rabbit
Clonality	Polyclonal
Isotype	Rabbit IgG
Calculated MW	86714
Antigen Region	12-39

PCDHB3 Antibody (N-term) - Additional Information

Gene ID 56132

Other Names

Protocadherin beta-3, PCDH-beta-3, PCDHB3

Target/Specificity

This PCDHB3 antibody is generated from rabbits immunized with a KLH conjugated synthetic peptide between 12-39 amino acids from the N-terminal region of human PCDHB3.

Dilution

IF~~1:10~50

IHC-P~~1:10~50

WB~~1:1000

E~~Use at an assay dependent concentration.

Format

Purified polyclonal antibody supplied in PBS with 0.09% (W/V) sodium azide. This antibody is purified through a protein A column, followed by peptide affinity purification.

Storage

Maintain refrigerated at 2-8°C for up to 2 weeks. For long term storage store at -20°C in small aliquots to prevent freeze-thaw cycles.

Precautions

PCDHB3 Antibody (N-term) is for research use only and not for use in diagnostic or therapeutic procedures.

PCDHB3 Antibody (N-term) - Protein Information

Name PCDHB3

Function Potential calcium-dependent cell-adhesion protein. May be involved in the establishment and maintenance of specific neuronal connections in the brain.

Cellular Location

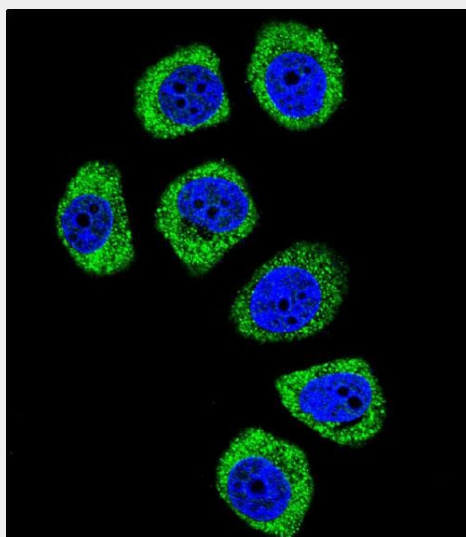
Cell membrane; Single-pass type I membrane protein

PCDHB3 Antibody (N-term) - Protocols

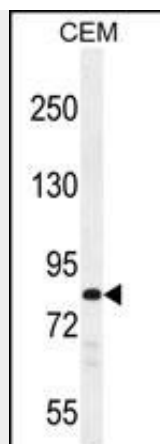
Provided below are standard protocols that you may find useful for product applications.

- [Western Blot](#)
- [Blocking Peptides](#)
- [Dot Blot](#)
- [Immunohistochemistry](#)
- [Immunofluorescence](#)
- [Immunoprecipitation](#)
- [Flow Cytometry](#)
- [Cell Culture](#)

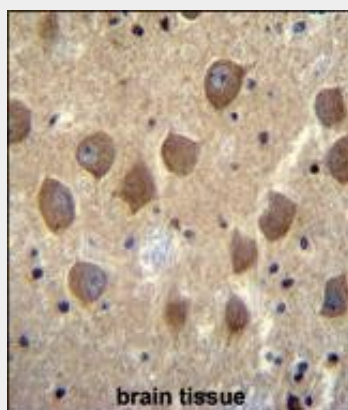
PCDHB3 Antibody (N-term) - Images



Confocal immunofluorescent analysis of PCDHB3 Antibody (N-term)(Cat#AP12159a) with U-251MG cell followed by Alexa Fluor 488-conjugated goat anti-rabbit IgG (green). DAPI was used to stain the cell nuclear (blue).



PCDHB3 Antibody (N-term) (Cat. #AP12159a) western blot analysis in CEM cell line lysates (35ug/lane). This demonstrates the PCDHB3 antibody detected the PCDHB3 protein (arrow).



PCDHB3 Antibody (N-term) (Cat. #AP12159a) immunohistochemistry analysis in formalin fixed and paraffin embedded human brain tissue followed by peroxidase conjugation of the secondary antibody and DAB staining. This data demonstrates the use of PCDHB3 Antibody (N-term) for immunohistochemistry. Clinical relevance has not been evaluated.

PCDHB3 Antibody (N-term) - Background

This gene is a member of the protocadherin beta gene cluster, one of three related gene clusters tandemly linked on chromosome five. The gene clusters demonstrate an unusual genomic organization similar to that of B-cell and T-cell receptor gene clusters. The beta cluster contains 16 genes and 3 pseudogenes, each encoding 6 extracellular cadherin domains and a cytoplasmic tail that deviates from others in the cadherin superfamily. The extracellular domains interact in a homophilic manner to specify differential cell-cell connections. Unlike the alpha and gamma clusters, the transcripts from these genes are made up of only one large exon, not sharing common 3' exons as expected. These neural cadherin-like cell adhesion proteins are integral plasma membrane proteins. Their specific functions are unknown but they most likely play a critical role in the establishment and function of specific cell-cell neural connections.

PCDHB3 Antibody (N-term) - References

Frank, M., et al. Curr. Opin. Cell Biol. 14(5):557-562(2002)

Vanhalst, K., et al. FEBS Lett. 495 (1-2), 120-125 (2001) :
Wu, Q., et al. Genome Res. 11(3):389-404(2001)
Nollet, F., et al. J. Mol. Biol. 299(3):551-572(2000)
Yagi, T., et al. Genes Dev. 14(10):1169-1180(2000)