

CDH24 Antibody (N-term)
Affinity Purified Rabbit Polyclonal Antibody (Pab)
Catalog # AP12160A**Specification**

CDH24 Antibody (N-term) - Product Information

Application	IHC-P, WB,E
Primary Accession	Q86UP0
Other Accession	Q6PFX6 , NP_659422.2 , NP_071923.2
Reactivity	Human
Predicted	Mouse
Host	Rabbit
Clonality	Polyclonal
Isotype	Rabbit IgG
Calculated MW	87752
Antigen Region	54-81

CDH24 Antibody (N-term) - Additional Information**Gene ID** 64403**Other Names**

Cadherin-24, CDH24, CDH11L

Target/Specificity

This CDH24 antibody is generated from rabbits immunized with a KLH conjugated synthetic peptide between 54-81 amino acids from the N-terminal region of human CDH24.

Dilution

IHC-P~~1:10~50

WB~~1:1000

E~~Use at an assay dependent concentration.

Format

Purified polyclonal antibody supplied in PBS with 0.09% (W/V) sodium azide. This antibody is purified through a protein A column, followed by peptide affinity purification.

Storage

Maintain refrigerated at 2-8°C for up to 2 weeks. For long term storage store at -20°C in small aliquots to prevent freeze-thaw cycles.

Precautions

CDH24 Antibody (N-term) is for research use only and not for use in diagnostic or therapeutic procedures.

CDH24 Antibody (N-term) - Protein Information**Name** CDH24

Synonyms CDH11L

Function Cadherins are calcium-dependent cell adhesion proteins. They preferentially interact with themselves in a homophilic manner in connecting cells; cadherins may thus contribute to the sorting of heterogeneous cell types. Cadherin-24 mediate strong cell-cell adhesion.

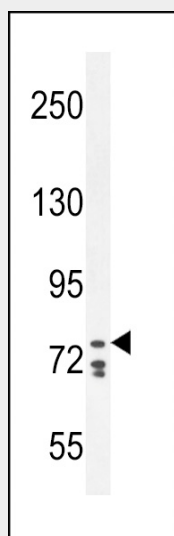
Cellular Location

Cell membrane; Single-pass type I membrane protein

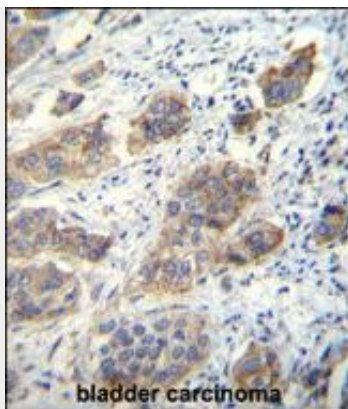
CDH24 Antibody (N-term) - Protocols

Provided below are standard protocols that you may find useful for product applications.

- [Western Blot](#)
- [Blocking Peptides](#)
- [Dot Blot](#)
- [Immunohistochemistry](#)
- [Immunofluorescence](#)
- [Immunoprecipitation](#)
- [Flow Cytometry](#)
- [Cell Culture](#)

CDH24 Antibody (N-term) - Images

CDH24 Antibody (N-term) (Cat. #AP12160a) western blot analysis in K562 cell line lysates (35ug/lane). This demonstrates the CDH24 antibody detected the CDH24 protein (arrow).



CDH24 Antibody (N-term) (Cat. #AP12160a) immunohistochemistry analysis in formalin fixed and paraffin embedded human bladder carcinoma followed by peroxidase conjugation of the secondary antibody and DAB staining. This data demonstrates the use of CDH24 Antibody (N-term) for immunohistochemistry. Clinical relevance has not been evaluated.

CDH24 Antibody (N-term) - Background

Cadherins are calcium dependent cell adhesion proteins. They preferentially interact with themselves in a homophilic manner in connecting cells; cadherins may thus contribute to the sorting of heterogeneous cell types. Cadherin-24 mediate strong cell-cell adhesion.

CDH24 Antibody (N-term) - References

Clark, H.F., et al. Genome Res. 13(10):2265-2270(2003)
Katafiasz, B.J., et al. J. Biol. Chem. 278(30):27513-27519(2003)
Ali, J., et al. Microcirculation 4(2):267-277(1997)
Hulsken, J., et al. J. Cell Biol. 127 (6 PT 2), 2061-2069 (1994) :