

TAF4B Antibody (C-term)
Affinity Purified Rabbit Polyclonal Antibody (Pab)
Catalog # AP12163b**Specification**

TAF4B Antibody (C-term) - Product Information

Application	FC, WB,E
Primary Accession	Q92750
Other Accession	G5E8Z2 , NP_005631.1
Reactivity	Human
Predicted	Mouse
Host	Rabbit
Clonality	Polyclonal
Isotype	Rabbit IgG
Calculated MW	91091
Antigen Region	647-675

TAF4B Antibody (C-term) - Additional Information**Gene ID** 6875**Other Names**

Transcription initiation factor TFIID subunit 4B, Transcription initiation factor TFIID 105 kDa subunit, TAF(II)105, TAFII-105, TAFII105, TAF4B, TAF2C2, TAFII105

Target/Specificity

This TAF4B antibody is generated from rabbits immunized with a KLH conjugated synthetic peptide between 647-675 amino acids from the C-terminal region of human TAF4B.

Dilution

FC~~1:10~50

WB~~1:1000

E~~Use at an assay dependent concentration.

Format

Purified polyclonal antibody supplied in PBS with 0.09% (W/V) sodium azide. This antibody is purified through a protein A column, followed by peptide affinity purification.

Storage

Maintain refrigerated at 2-8°C for up to 2 weeks. For long term storage store at -20°C in small aliquots to prevent freeze-thaw cycles.

Precautions

TAF4B Antibody (C-term) is for research use only and not for use in diagnostic or therapeutic procedures.

TAF4B Antibody (C-term) - Protein Information

Name TAF4B

Synonyms TAF2C2, TAFII105

Function Cell type-specific subunit of the general transcription factor TFIID that may function as a gene-selective coactivator in certain cells. TFIID is a multimeric protein complex that plays a central role in mediating promoter responses to various activators and repressors. TAF4B is a transcriptional coactivator of the p65/RELA NF- κ B subunit. Involved in the activation of a subset of antiapoptotic genes including TNFAIP3. May be involved in regulating folliculogenesis. Through interaction with OCBA/POU2AF1, acts as a coactivator of B-cell-specific transcription. Plays a role in spermiogenesis and oogenesis.

Cellular Location

Nucleus. Cytoplasm. Note=Export into the cytoplasm is mediated by a CRM1-independent nuclear export pathway and not by phosphorylation.

Tissue Location

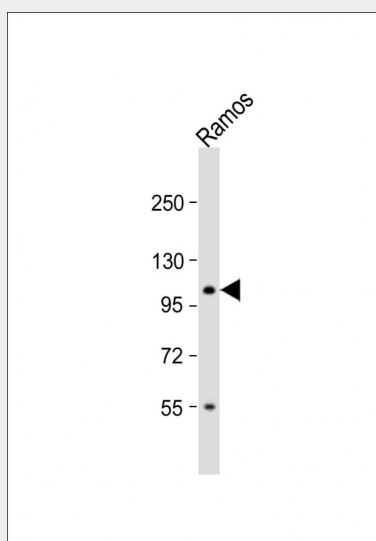
Preferentially expressed in ovarian granulosa cells (at protein level). Highly expressed in B-cells

TAF4B Antibody (C-term) - Protocols

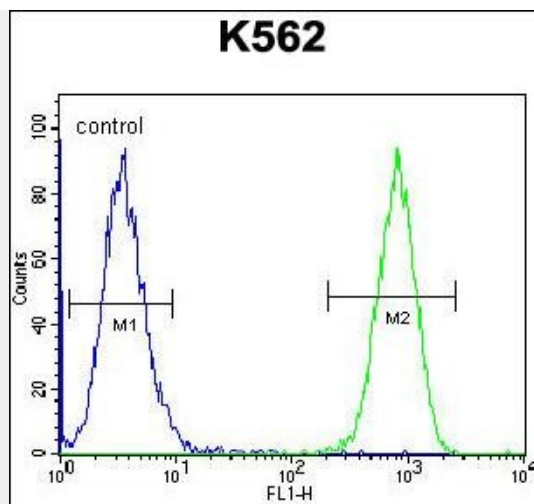
Provided below are standard protocols that you may find useful for product applications.

- [Western Blot](#)
- [Blocking Peptides](#)
- [Dot Blot](#)
- [Immunohistochemistry](#)
- [Immunofluorescence](#)
- [Immunoprecipitation](#)
- [Flow Cytometry](#)
- [Cell Culture](#)

TAF4B Antibody (C-term) - Images



Anti-TAF4B Antibody (C-term) at 1:1000 dilution + Ramos whole cell lysate Lysates/proteins at 20 μ g per lane. Secondary Goat Anti-Rabbit IgG, (H+L), Peroxidase conjugated at 1/10000 dilution. Predicted band size : 91 kDa Blocking/Dilution buffer: 5% NFDm/TBST.



TAF4B Antibody (C-term) (Cat. #AP12163b) flow cytometric analysis of K562 cells (right histogram) compared to a negative control cell (left histogram). FITC-conjugated goat-anti-rabbit secondary antibodies were used for the analysis.

TAF4B Antibody (C-term) - Background

TATA-binding protein associated factors (TAFs) participate, with TATA binding protein (TBP; MIM 600075), in the formation of the TFIID protein complex (see MIM 313650), which is involved in the initiation of gene transcription by RNA polymerase II (see MIM 180660).

TAF4B Antibody (C-term) - References

Kalogeropoulou, M., et al. Mol. Cancer Res. 8(4):554-568(2010)
Gazit, K., et al. J. Biol. Chem. 284(39):26286-26296(2009)
Knauff, E.A., et al. Hum. Reprod. 24(9):2372-2378(2009)
Teye, K., et al. Int. J. Oncol. 33(6):1271-1280(2008)
Liu, W.L., et al. Mol. Cell 29(1):81-91(2008)