

**FAM109A Antibody (N-term)**  
**Affinity Purified Rabbit Polyclonal Antibody (Pab)**  
**Catalog # AP12167a****Specification**

---

**FAM109A Antibody (N-term) - Product Information**

Application	WB, IHC-P,E
Primary Accession	<a href="#">Q8N4B1</a>
Other Accession	<a href="#">NP_653272.2</a> , <a href="#">NP_001171468.1</a>
Reactivity	Human
Host	Rabbit
Clonality	Polyclonal
Isotype	Rabbit IgG
Calculated MW	27215
Antigen Region	3-31

**FAM109A Antibody (N-term) - Additional Information****Gene ID** 144717**Other Names**

Sesquipedalian-1, Ses1, 27 kDa inositol polyphosphate phosphatase-interacting protein A, IPIP27A, FAM109A

**Target/Specificity**

This FAM109A antibody is generated from rabbits immunized with a KLH conjugated synthetic peptide between 3-31 amino acids from the N-terminal region of human FAM109A.

**Dilution**

WB~~1:1000

IHC-P~~1:10~50

**Format**

Purified polyclonal antibody supplied in PBS with 0.09% (W/V) sodium azide. This antibody is purified through a protein A column, followed by peptide affinity purification.

**Storage**

Maintain refrigerated at 2-8°C for up to 2 weeks. For long term storage store at -20°C in small aliquots to prevent freeze-thaw cycles.

**Precautions**

FAM109A Antibody (N-term) is for research use only and not for use in diagnostic or therapeutic procedures.

**FAM109A Antibody (N-term) - Protein Information****Name** PHETA1 ([HGNC:26509](#))

**Function** Plays a role in endocytic trafficking. Required for receptor recycling from endosomes, both to the trans-Golgi network and the plasma membrane.

**Cellular Location**

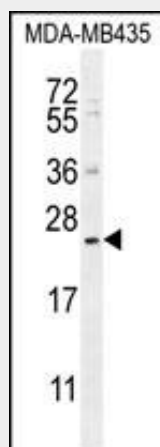
Early endosome. Recycling endosome. Golgi apparatus, trans-Golgi network. Cytoplasmic vesicle, clathrin-coated vesicle. Note=Interaction with OCRL may be crucial for targeting to endosome and to the trans- Golgi network. Also found on macropinosomes. Not detected in late endosomes, nor in lysosomes.

**FAM109A Antibody (N-term) - Protocols**

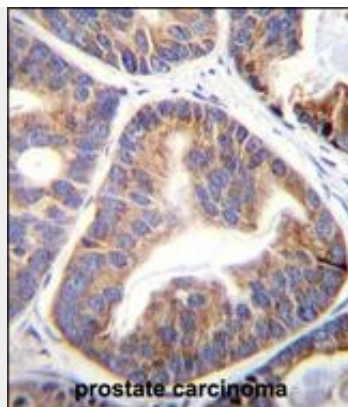
Provided below are standard protocols that you may find useful for product applications.

- [Western Blot](#)
- [Blocking Peptides](#)
- [Dot Blot](#)
- [Immunohistochemistry](#)
- [Immunofluorescence](#)
- [Immunoprecipitation](#)
- [Flow Cytometry](#)
- [Cell Culture](#)

**FAM109A Antibody (N-term) - Images**



FAM109A Antibody (N-term) (Cat. #AP12167a) western blot analysis in MDA-MB435 cell line lysates (35ug/lane). This demonstrates the FAM109A antibody detected the FAM109A protein (arrow).



FAM109A Antibody (N-term) (Cat. #AP12167a) immunohistochemistry analysis in formalin fixed and paraffin embedded human prostate carcinoma followed by peroxidase conjugation of the secondary antibody and DAB staining. This data demonstrates the use of FAM109A Antibody (N-term) for immunohistochemistry. Clinical relevance has not been evaluated.

#### **FAM109A Antibody (N-term) - Background**

This gene encodes a protein that localizes to the endosome and interacts with the enzyme, inositol polyphosphate 5-phosphatase OCRL-1. Alternate splicing results in multiple transcript variants.

#### **FAM109A Antibody (N-term) - References**

Swan, L.E., et al. Proc. Natl. Acad. Sci. U.S.A. 107(8):3511-3516(2010)