

FOXE3 Antibody (Center)
Affinity Purified Rabbit Polyclonal Antibody (Pab)
Catalog # AP12176c**Specification**

FOXE3 Antibody (Center) - Product Information

Application	WB,E
Primary Accession	Q13461
Other Accession	Q63250 , Q9OY14 , NP_036318.1
Reactivity	Human
Predicted	Mouse, Rat
Host	Rabbit
Clonality	Polyclonal
Isotype	Rabbit IgG
Calculated MW	33234
Antigen Region	87-114

FOXE3 Antibody (Center) - Additional Information**Gene ID** 2301**Other Names**

Forkhead box protein E3, Forkhead-related protein FKHL12, Forkhead-related transcription factor 8, FREAC-8, FOXE3, FKHL12, FREAC8

Target/Specificity

This FOXE3 antibody is generated from rabbits immunized with a KLH conjugated synthetic peptide between 87-114 amino acids from the Central region of human FOXE3.

Dilution

WB~~1:1000

E~~Use at an assay dependent concentration.

Format

Purified polyclonal antibody supplied in PBS with 0.09% (W/V) sodium azide. This antibody is purified through a protein A column, followed by peptide affinity purification.

Storage

Maintain refrigerated at 2-8°C for up to 2 weeks. For long term storage store at -20°C in small aliquots to prevent freeze-thaw cycles.

Precautions

FOXE3 Antibody (Center) is for research use only and not for use in diagnostic or therapeutic procedures.

FOXE3 Antibody (Center) - Protein Information**Name** FOXE3

Synonyms FKHL12, FREAC8

Function Transcription factor that controls lens epithelial cell growth through regulation of proliferation, apoptosis and cell cycle (PubMed:[22527307](#), PubMed:[25504734](#)). During lens development, controls the ratio of the lens fiber cells to the cells of the anterior lens epithelium by regulating the rate of proliferation and differentiation (By similarity). Controls lens vesicle closure and subsequent separation of the lens vesicle from ectoderm (By similarity). Controls the expression of DNAJB1 in a pathway that is crucial for the development of the anterior segment of the eye (PubMed:[27218149](#)).

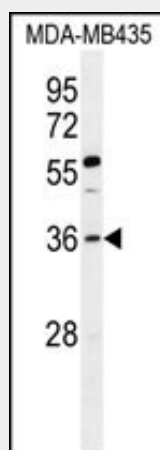
Cellular Location

Nucleus.

FOXE3 Antibody (Center) - Protocols

Provided below are standard protocols that you may find useful for product applications.

- [Western Blot](#)
- [Blocking Peptides](#)
- [Dot Blot](#)
- [Immunohistochemistry](#)
- [Immunofluorescence](#)
- [Immunoprecipitation](#)
- [Flow Cytometry](#)
- [Cell Culture](#)

FOXE3 Antibody (Center) - Images

FOXE3 Antibody (Center) (Cat. #AP12176c) western blot analysis in MDA-MB435 cell line lysates (35ug/lane). This demonstrates the FOXE3 antibody detected the FOXE3 protein (arrow).

FOXE3 Antibody (Center) - Background

This intronless gene belongs to the forkhead family of transcription factors, which is characterized by a distinct forkhead domain. The protein encoded functions as a lens-specific transcription factor and plays an important role in vertebrate lens formation. Mutations in this gene are associated with anterior segment mesenchymal dysgenesis and congenital primary aphakia.

FOXE3 Antibody (Center) - References

Reis, L.M., et al. Am. J. Med. Genet. A 152A (3), 582-590 (2010) :
Bremond-Gignac, D., et al. Mol. Vis. 16, 1705-1711 (2010) :
Ali, M., et al. Mol. Vis. 16, 1162-1168 (2010) :
Anjum, I., et al. Mol. Vis. 16, 549-555 (2010) :
Iseri, S.U., et al. Hum. Mutat. 30(10):1378-1386(2009)