

STUB1 Antibody (C-term)
Affinity Purified Rabbit Polyclonal Antibody (Pab)
Catalog # AP12177b**Specification**

STUB1 Antibody (C-term) - Product Information

Application	WB, FC, E
Primary Accession	O9UNE7
Other Accession	O9WUD1 , Q5ZHY5 , NP_005852.2 , A6HD62
Reactivity	Human
Predicted	Chicken, Mouse, Rat
Host	Rabbit
Clonality	Polyclonal
Isotype	Rabbit IgG
Calculated MW	34856
Antigen Region	236-263

STUB1 Antibody (C-term) - Additional Information**Gene ID** 10273**Other Names**

E3 ubiquitin-protein ligase CHIP, 632-, Antigen NY-CO-7, CLL-associated antigen KW-8, Carboxy terminus of Hsp70-interacting protein, STIP1 homology and U box-containing protein 1 {ECO:0000312|HGNC:HGNC:11427}, STUB1 (HGNC:11427)

Target/Specificity

This STUB1 antibody is generated from rabbits immunized with a KLH conjugated synthetic peptide between 236-263 amino acids from the C-terminal region of human STUB1.

Dilution

WB~~1:1000

FC~~1:10~50

E~~Use at an assay dependent concentration.

Format

Purified polyclonal antibody supplied in PBS with 0.09% (W/V) sodium azide. This antibody is purified through a protein A column, followed by peptide affinity purification.

Storage

Maintain refrigerated at 2-8°C for up to 2 weeks. For long term storage store at -20°C in small aliquots to prevent freeze-thaw cycles.

Precautions

STUB1 Antibody (C-term) is for research use only and not for use in diagnostic or therapeutic procedures.

STUB1 Antibody (C-term) - Protein Information

Name STUB1 {ECO:0000303|PubMed:23973223, ECO:0000312|HGNC:HGNC:11427}

Function E3 ubiquitin-protein ligase which targets misfolded chaperone substrates towards proteasomal degradation (PubMed:[10330192](#), PubMed:[11146632](#), PubMed:[11557750](#), PubMed:[23990462](#), PubMed:[26265139](#)). Plays a role in the maintenance of mitochondrial morphology and promotes mitophagic removal of dysfunctional mitochondria; thereby acts as a protector against apoptosis in response to cellular stress (By similarity). Negatively regulates vascular smooth muscle contraction, via degradation of the transcriptional activator MYOCD and subsequent loss of transcription of genes involved in vascular smooth muscle contraction (By similarity). Promotes survival and proliferation of cardiac smooth muscle cells via ubiquitination and degradation of FOXO1, resulting in subsequent repression of FOXO1-mediated transcription of pro-apoptotic genes (PubMed:[19483080](#)). Ubiquitinates ICER-type isoforms of CREM and targets them for proteasomal degradation, thereby acts as a positive effector of MAPK/ERK-mediated inhibition of apoptosis in cardiomyocytes (PubMed:[20724525](#)). Inhibits lipopolysaccharide-induced apoptosis and hypertrophy in cardiomyocytes, via ubiquitination and subsequent proteasomal degradation of NFATC3 (PubMed:[30980393](#)). Collaborates with ATXN3 in the degradation of misfolded chaperone substrates: ATXN3 restricting the length of ubiquitin chain attached to STUB1/CHIP substrates and preventing further chain extension (PubMed:[10330192](#), PubMed:[11146632](#), PubMed:[11557750](#), PubMed:[23990462](#)). Ubiquitinates NOS1 in concert with Hsp70 and Hsp40 (PubMed:[15466472](#)). Modulates the activity of several chaperone complexes, including Hsp70, Hsc70 and Hsp90 (PubMed:[10330192](#), PubMed:[11146632](#), PubMed:[15466472](#)). Ubiquitinates CHRNA3 targeting it for endoplasmic reticulum-associated degradation in cortical neurons, as part of the STUB1-VCP-UBXN2A complex (PubMed:[26265139](#)). Ubiquitinates and promotes ESR1 proteasomal degradation in response to age-related circulating estradiol (17-beta-estradiol/E2) decline, thereby promotes neuronal apoptosis in response to ischemic reperfusion injury (By similarity). Mediates transfer of non-canonical short ubiquitin chains to HSPA8 that have no effect on HSPA8 degradation (PubMed:[11557750](#), PubMed:[23990462](#)). Mediates polyubiquitination of DNA polymerase beta (POLB) at 'Lys-41', 'Lys-61' and 'Lys-81', thereby playing a role in base-excision repair: catalyzes polyubiquitination by amplifying the HUWE1/ARF-BP1-dependent monoubiquitination and leading to POLB-degradation by the proteasome (PubMed:[19713937](#)). Mediates polyubiquitination of CYP3A4 (PubMed:[19103148](#)). Ubiquitinates EPHA2 and may regulate the receptor stability and activity through proteasomal degradation (PubMed:[19567782](#)). Acts as a co-chaperone for HSPA1A and HSPA1B chaperone proteins and promotes ubiquitin-mediated protein degradation (PubMed:[27708256](#)). Negatively regulates the suppressive function of regulatory T-cells (Treg) during inflammation by mediating the ubiquitination and degradation of FOXP3 in a HSPA1A/B-dependent manner (PubMed:[23973223](#)). Catalyzes monoubiquitination of SIRT6, preventing its degradation by the proteasome (PubMed:[24043303](#)). Likely mediates polyubiquitination and down-regulates plasma membrane expression of PD-L1/CD274, an immune inhibitory ligand critical for immune tolerance to self and antitumor immunity (PubMed:[28813410](#)). Negatively regulates TGF-beta signaling by modulating the basal level of SMAD3 via ubiquitin-mediated degradation (PubMed:[24613385](#)). Plays a role in the degradation of TP53 (PubMed:[26634371](#)). Mediates ubiquitination of RIPK3 leading to its subsequent proteasome-dependent degradation (PubMed:[29883609](#)). May regulate myosin assembly in striated muscles together with UBE4B and VCP/p97 by targeting myosin chaperone UNC45B for proteasomal degradation (PubMed:[17369820](#)). Ubiquitinates PPARG in macrophages playing a role in M2 macrophages polarization and angiogenesis (By similarity).

Cellular Location

Cytoplasm. Nucleus. Mitochondrion {ECO:0000250|UniProtKB:A6HD62}. Note=Translocates to the nucleus in response to inflammatory signals in regulatory T-cells (Treg) Localizes to mitochondria following oxygen and glucose deprivation- induced cellular stress (By similarity). {ECO:0000250|UniProtKB:A6HD62, ECO:0000269|PubMed:23973223}

Tissue Location

Expressed in differentiated myotubes (at protein level) (PubMed:[17369820](#)). Highly expressed in

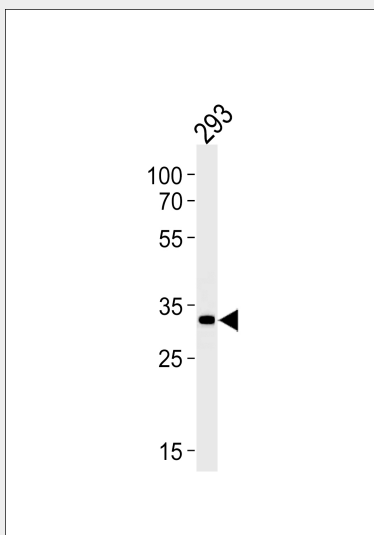
skeletal muscle, heart, pancreas, brain and placenta (PubMed:10330192, PubMed:11435423)
Detected in kidney, liver and lung (PubMed:10330192, PubMed:11435423)

STUB1 Antibody (C-term) - Protocols

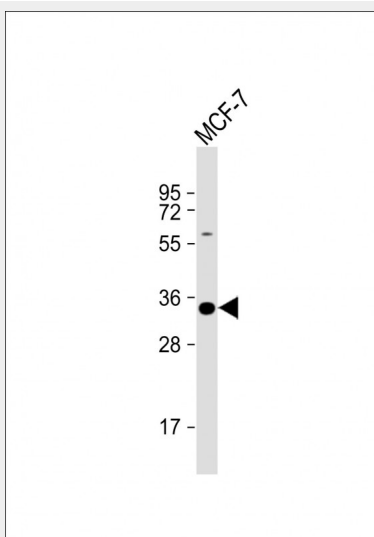
Provided below are standard protocols that you may find useful for product applications.

- [Western Blot](#)
- [Blocking Peptides](#)
- [Dot Blot](#)
- [Immunohistochemistry](#)
- [Immunofluorescence](#)
- [Immunoprecipitation](#)
- [Flow Cytometry](#)
- [Cell Culture](#)

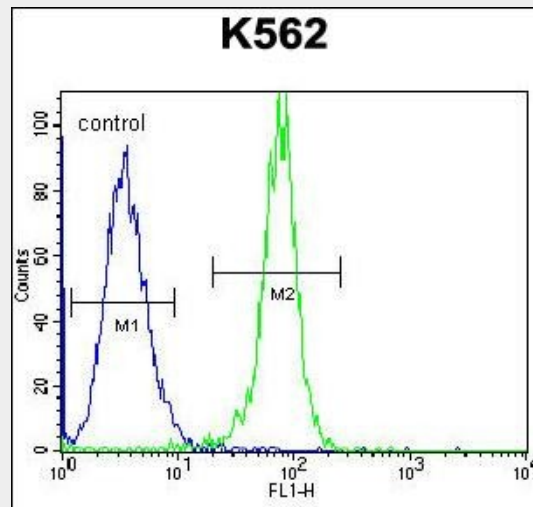
STUB1 Antibody (C-term) - Images



STUB1 Antibody (C-term) (Cat.# AP12177b) western blot analysis in 293 cell line lysates (35ug/lane). This demonstrates the STUB1 antibody detected the STUB1 protein (arrow).



Anti-STUB1 Antibody (C-term) at 1:1000 dilution + MCF-7 whole cell lysate Lysates/proteins at 20 µg per lane. Secondary Goat Anti-Rabbit IgG, (H+L), Peroxidase conjugated at 1/10000 dilution. Predicted band size : 35 kDa Blocking/Dilution buffer: 5% NFDM/TBST.



STUB1 Antibody (C-term) (Cat. #AP12177b) flow cytometric analysis of K562 cells (right histogram) compared to a negative control cell (left histogram). FITC-conjugated goat-anti-rabbit secondary antibodies were used for the analysis.

STUB1 Antibody (C-term) - Background

STUB1, or CHIP, is a ubiquitin ligase/cochaperone that participates in protein quality control by targeting a broad range of chaperone protein substrates for degradation (Min et al., 2008 [PubMed 18411298]).

STUB1 Antibody (C-term) - References

Stankiewicz, M., et al. FEBS J. 277(16):3353-3367(2010)
Naito, A.T., et al. Circ. Res. 106(11):1692-1702(2010)
Loffek, S., et al. Hum. Mutat. 31(4):466-476(2010)
Graf, C., et al. Biochemistry 49(10):2121-2129(2010)
Schulke, J.P., et al. PLoS ONE 5 (7), E11717 (2010) :