

TOR2A Antibody (Center)
Affinity Purified Rabbit Polyclonal Antibody (Pab)
Catalog # AP12178c**Specification**

TOR2A Antibody (Center) - Product Information

Application	IHC-P, WB,E
Primary Accession	Q5JU69
Other Accession	Q6AYR4 , NP_001127902.1 , NP_569726.2
Reactivity	Human
Predicted	Rat
Host	Rabbit
Clonality	Polyclonal
Isotype	Rabbit IgG
Calculated MW	35714
Antigen Region	194-221

TOR2A Antibody (Center) - Additional Information**Gene ID** 27433**Other Names**

Torsin-2A, Torsin family 2 member A, Torsin-related protein 1, TOR2A, TORP1

Target/Specificity

This TOR2A antibody is generated from rabbits immunized with a KLH conjugated synthetic peptide between 194-221 amino acids from the Central region of human TOR2A.

Dilution

IHC-P~~1:10~50

WB~~1:1000

E~~Use at an assay dependent concentration.

Format

Purified polyclonal antibody supplied in PBS with 0.09% (W/V) sodium azide. This antibody is purified through a protein A column, followed by peptide affinity purification.

Storage

Maintain refrigerated at 2-8°C for up to 2 weeks. For long term storage store at -20°C in small aliquots to prevent freeze-thaw cycles.

Precautions

TOR2A Antibody (Center) is for research use only and not for use in diagnostic or therapeutic procedures.

TOR2A Antibody (Center) - Protein Information**Name** TOR2A

Synonyms TORP1**Cellular Location**

Endoplasmic reticulum lumen.

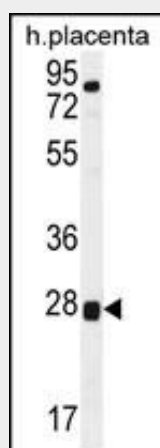
Tissue Location

Isoform 1 is expressed ubiquitously, except in cardiac and endothelial tissues.

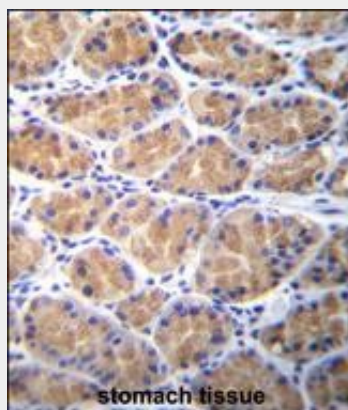
TOR2A Antibody (Center) - Protocols

Provided below are standard protocols that you may find useful for product applications.

- [Western Blot](#)
- [Blocking Peptides](#)
- [Dot Blot](#)
- [Immunohistochemistry](#)
- [Immunofluorescence](#)
- [Immunoprecipitation](#)
- [Flow Cytometry](#)
- [Cell Culture](#)

TOR2A Antibody (Center) - Images

TOR2A Antibody (Center) (Cat. #AP12178c) western blot analysis in human placenta tissue lysates (35ug/lane). This demonstrates the TOR2A antibody detected the TOR2A protein (arrow).



TOR2A Antibody (Center) (Cat. #AP12178c) immunohistochemistry analysis in formalin fixed and

paraffin embedded human stomach tissue followed by peroxidase conjugation of the secondary antibody and DAB staining. This data demonstrates the use of TOR2A Antibody (Center) for immunohistochemistry. Clinical relevance has not been evaluated.

TOR2A Antibody (Center) - Background

Salusins are multifunctional bioactive peptides discovered by bioinformatics analyses of a full-length cDNA library. Salusin alpha and salusin beta are related peptides of 28 and 20 amino acids that were recently characterized. These peptides are considered to be biosynthesized from preprosalusin, an alternative-splicing product of the torsion dystonia-related gene (TOR2A), after frameshift reading and digestion at dibasic amino acids. Salusin alpha has recently been shown to be involved in atherosclerosis; it potently suppresses acyl-CoA:cholesterol acyltransferase-1 which stores cholesterol ester converted from free cholesterol in macrophages, thereby reducing human macrophage foam cell formation.

TOR2A Antibody (Center) - References

O'Farrell, C.A., et al. Neuroscience 164(3):1127-1137(2009)
Sato, K., et al. Peptides 29(12):2203-2207(2008)
Watanabe, T., et al. Hypertens. Res. 31(3):463-468(2008)
Wang, Z., et al. Eur. J. Pharmacol. 539(3):145-150(2006)
Humphray, S.J., et al. Nature 429(6990):369-374(2004)