

STX16 Antibody (C-term)
Affinity Purified Rabbit Polyclonal Antibody (Pab)
Catalog # AP12179b**Specification**

STX16 Antibody (C-term) - Product Information

Application	FC, WB,E
Primary Accession	O14662
Other Accession	Q8BVI5 , NP_001128245.1 , NP_001001433.1 , NP_003754.2
Reactivity	Human
Predicted	Mouse
Host	Rabbit
Clonality	Polyclonal
Isotype	Rabbit IgG
Calculated MW	37031
Antigen Region	247-274

STX16 Antibody (C-term) - Additional Information**Gene ID** 8675**Other Names**

Syntaxin-16, Syn16, STX16

Target/Specificity

This STX16 antibody is generated from rabbits immunized with a KLH conjugated synthetic peptide between 247-274 amino acids from the C-terminal region of human STX16.

Dilution

FC~~1:10~50

WB~~1:1000

E~~Use at an assay dependent concentration.

Format

Purified polyclonal antibody supplied in PBS with 0.09% (W/V) sodium azide. This antibody is purified through a protein A column, followed by peptide affinity purification.

Storage

Maintain refrigerated at 2-8°C for up to 2 weeks. For long term storage store at -20°C in small aliquots to prevent freeze-thaw cycles.

Precautions

STX16 Antibody (C-term) is for research use only and not for use in diagnostic or therapeutic procedures.

STX16 Antibody (C-term) - Protein Information

Name STX16

Function SNARE involved in vesicular transport from the late endosomes to the trans-Golgi network.

Cellular Location

Golgi apparatus membrane; Single-pass type IV membrane protein

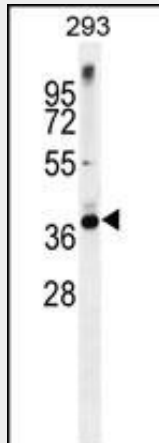
Tissue Location

Ubiquitous.

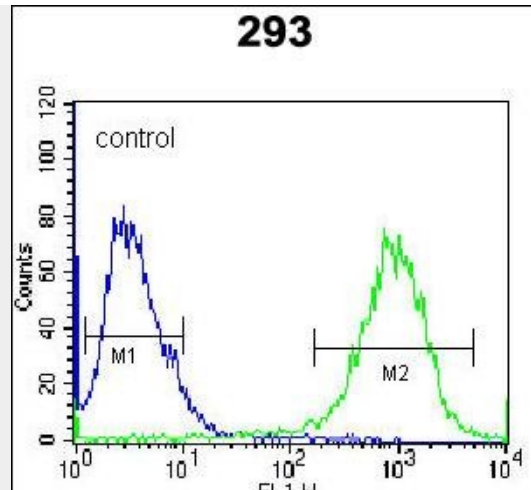
STX16 Antibody (C-term) - Protocols

Provided below are standard protocols that you may find useful for product applications.

- [Western Blot](#)
- [Blocking Peptides](#)
- [Dot Blot](#)
- [Immunohistochemistry](#)
- [Immunofluorescence](#)
- [Immunoprecipitation](#)
- [Flow Cytometry](#)
- [Cell Culture](#)

STX16 Antibody (C-term) - Images

STX16 Antibody (C-term) (Cat. #AP12179b) western blot analysis in 293 cell line lysates (35ug/lane). This demonstrates the STX16 antibody detected the STX16 protein (arrow).



STX16 Antibody (C-term) (Cat. #AP12179b) flow cytometric analysis of 293 cells (right histogram) compared to a negative control cell (left histogram). FITC-conjugated goat-anti-rabbit secondary antibodies were used for the analysis.

STX16 Antibody (C-term) - Background

This gene encodes a protein that is a member of the syntaxin or t-SNARE (target-SNAP receptor) family. These proteins are found on cell membranes and serve as the targets for V-SNARES (vesicle-SNAP receptors) permitting specific synaptic vesicle docking and fusion. A microdeletion in the region of chromosome 20 where this gene is located has been associated with pseudohypoparathyroidism type 1b. Multiple transcript variants encoding different isoforms have been found for this gene.

STX16 Antibody (C-term) - References

Song, S.J., et al. Cancer Res. 69(22):8540-8544(2009)
Ganley, I.G., et al. J. Cell Biol. 180(1):159-172(2008)
Chua, C.E., et al. Mol. Membr. Biol. 25(1):35-45(2008)
Amessou, M., et al. J. Cell. Sci. 120 (PT 8), 1457-1468 (2007) :
Linglart, A., et al. Am. J. Hum. Genet. 76(5):804-814(2005)