

FOXI1 Antibody (Center)
Affinity Purified Rabbit Polyclonal Antibody (Pab)
Catalog # AP12180c**Specification**

FOXI1 Antibody (Center) - Product Information

Application	WB,E
Primary Accession	Q12951
Other Accession	NP_658982.1 , NP_036320.2
Reactivity	Human
Host	Rabbit
Clonality	Polyclonal
Isotype	Rabbit IgG
Calculated MW	40973
Antigen Region	224-253

FOXI1 Antibody (Center) - Additional Information**Gene ID** 2299**Other Names**

Forkhead box protein I1, Forkhead-related protein FKHL10, Forkhead-related transcription factor 6, FREAC-6, Hepatocyte nuclear factor 3 forkhead homolog 3, HFH-3, HNF-3/fork-head homolog 3, FOXI1, FKHL10, FREAC6

Target/Specificity

This FOXI1 antibody is generated from rabbits immunized with a KLH conjugated synthetic peptide between 224-253 amino acids from the Central region of human FOXI1.

Dilution

WB~~1:1000

Format

Purified polyclonal antibody supplied in PBS with 0.09% (W/V) sodium azide. This antibody is purified through a protein A column, followed by peptide affinity purification.

Storage

Maintain refrigerated at 2-8°C for up to 2 weeks. For long term storage store at -20°C in small aliquots to prevent freeze-thaw cycles.

Precautions

FOXI1 Antibody (Center) is for research use only and not for use in diagnostic or therapeutic procedures.

FOXI1 Antibody (Center) - Protein Information**Name** FOXI1

Synonyms FKHL10, FREAC6

Function Transcriptional activator required for the development of normal hearing, sense of balance and kidney function. Required for the expression of SLC26A4/PDS, JAG1 and COCH in a subset of epithelial cells and the development of the endolymphatic system in the inner ear. Also required for the expression of SLC4A1/AE1, SLC4A9/AE4, ATP6V1B1 and the differentiation of intercalated cells in the epithelium of distal renal tubules (By similarity).

Cellular Location

Nucleus.

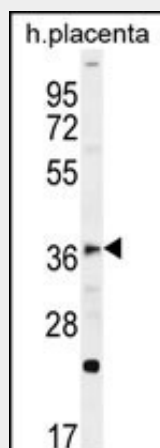
Tissue Location

Expressed in kidney.

FOXI1 Antibody (Center) - Protocols

Provided below are standard protocols that you may find useful for product applications.

- [Western Blot](#)
- [Blocking Peptides](#)
- [Dot Blot](#)
- [Immunohistochemistry](#)
- [Immunofluorescence](#)
- [Immunoprecipitation](#)
- [Flow Cytometry](#)
- [Cell Culture](#)

FOXI1 Antibody (Center) - Images

FOXI1 Antibody (Center) (Cat. #AP12180c) western blot analysis in human placenta tissue lysates (35ug/lane). This demonstrates the FOXI1 antibody detected the FOXI1 protein (arrow).

FOXI1 Antibody (Center) - Background

This gene belongs to the forkhead family of transcription factors which is characterized by a distinct forkhead domain. The specific function of this gene has not yet been determined; however, it is possible that this gene plays an important role in the development of the cochlea and vestibulum, as well as embryogenesis. Mutations in this gene may be associated with the

common cavity phenotype. Two transcript variants encoding different isoforms have been found for this gene.

FOXI1 Antibody (Center) - References

Jonard, L., et al. Int. J. Pediatr. Otorhinolaryngol. 74(9):1049-1053(2010)
Moreno-Estrada, A., et al. BMC Evol. Biol. 10, 267 (2010) :
Vidarsson, H., et al. PLoS ONE 4 (2), E4471 (2009) :
Ferrell, R.E., et al. Lymphat Res Biol 6(2):69-76(2008)
Rodriguez-Antona, C., et al. Mol. Pharmacol. 63(5):1180-1189(2003)