

OR4M1 Antibody (C-term)
Affinity Purified Rabbit Polyclonal Antibody (Pab)
Catalog # AP12214b**Specification**

OR4M1 Antibody (C-term) - Product Information

Application	WB,E
Primary Accession	Q8NGD0
Other Accession	NP_001005500.1
Reactivity	Human
Host	Rabbit
Clonality	Polyclonal
Isotype	Rabbit IgG
Calculated MW	35488
Antigen Region	277-306

OR4M1 Antibody (C-term) - Additional Information**Gene ID** 441670**Other Names**

Olfactory receptor 4M1, Olfactory receptor OR14-7, OR4M1

Target/Specificity

This OR4M1 antibody is generated from rabbits immunized with a KLH conjugated synthetic peptide between 277-306 amino acids from the C-terminal region of human OR4M1.

Dilution

WB~~1:1000

Format

Purified polyclonal antibody supplied in PBS with 0.09% (W/V) sodium azide. This antibody is purified through a protein A column, followed by peptide affinity purification.

Storage

Maintain refrigerated at 2-8°C for up to 2 weeks. For long term storage store at -20°C in small aliquots to prevent freeze-thaw cycles.

Precautions

OR4M1 Antibody (C-term) is for research use only and not for use in diagnostic or therapeutic procedures.

OR4M1 Antibody (C-term) - Protein Information**Name** OR4M1 {ECO:0000303|PubMed:31230984, ECO:0000312|HGNC:HGNC:14735}**Function** Olfactory receptor that acts as a receptor of Asprosin hormone, potentially at the surface of hepatocytes and may help to promote hepatocyte glucose release.

Cellular Location

Cell membrane; Multi-pass membrane protein {ECO:0000255|RuleBase:RU363047}

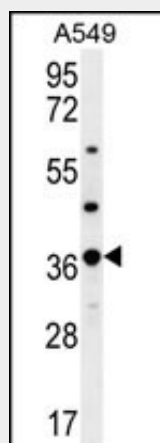
Tissue Location

Highly expressed in the testis and olfactory bulb.

OR4M1 Antibody (C-term) - Protocols

Provided below are standard protocols that you may find useful for product applications.

- [Western Blot](#)
- [Blocking Peptides](#)
- [Dot Blot](#)
- [Immunohistochemistry](#)
- [Immunofluorescence](#)
- [Immunoprecipitation](#)
- [Flow Cytometry](#)
- [Cell Culture](#)

OR4M1 Antibody (C-term) - Images

OR4M1 Antibody (C-term) (Cat. #AP12214b) western blot analysis in A549 cell line lysates (35ug/lane). This demonstrates the OR4M1 antibody detected the OR4M1 protein (arrow).

OR4M1 Antibody (C-term) - Background

Olfactory receptors interact with odorant molecules in the nose, to initiate a neuronal response that triggers the perception of a smell. The olfactory receptor proteins are members of a large family of G-protein-coupled receptors (GPCR) arising from single coding-exon genes. Olfactory receptors share a 7-transmembrane domain structure with many neurotransmitter and hormone receptors and are responsible for the recognition and G protein-mediated transduction of odorant signals. The olfactory receptor gene family is the largest in the genome. The nomenclature assigned to the olfactory receptor genes and proteins for this organism is independent of other organisms.

OR4M1 Antibody (C-term) - References

Malnic, B., et al. Proc. Natl. Acad. Sci. U.S.A. 101(8):2584-2589(2004)