

CCNYL3 Antibody (N-term)
Affinity Purified Rabbit Polyclonal Antibody (Pab)
Catalog # AP12215a**Specification**

CCNYL3 Antibody (N-term) - Product Information

Application	WB, FC,E
Primary Accession	P0C7X3
Other Accession	XP_930958.4
Reactivity	Human
Host	Rabbit
Clonality	Polyclonal
Isotype	Rabbit IgG
Calculated MW	39078
Antigen Region	46-74

CCNYL3 Antibody (N-term) - Additional Information**Other Names**

Putative cyclin-Y-like protein 3, CCNYL3

Target/Specificity

This CCNYL3 antibody is generated from rabbits immunized with a KLH conjugated synthetic peptide between 46-74 amino acids from the N-terminal region of human CCNYL3.

Dilution

WB~~1:1000

FC~~1:10~50

Format

Purified polyclonal antibody supplied in PBS with 0.09% (W/V) sodium azide. This antibody is purified through a protein A column, followed by peptide affinity purification.

Storage

Maintain refrigerated at 2-8°C for up to 2 weeks. For long term storage store at -20°C in small aliquots to prevent freeze-thaw cycles.

Precautions

CCNYL3 Antibody (N-term) is for research use only and not for use in diagnostic or therapeutic procedures.

CCNYL3 Antibody (N-term) - Protein Information

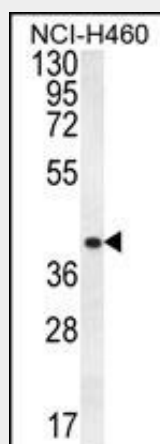
Name CCNYL3

CCNYL3 Antibody (N-term) - Protocols

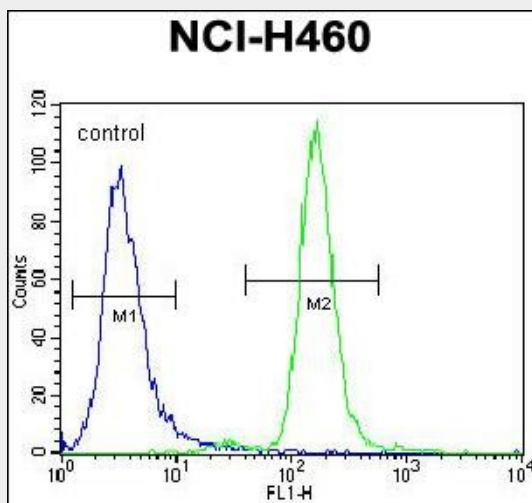
Provided below are standard protocols that you may find useful for product applications.

- [Western Blot](#)
- [Blocking Peptides](#)
- [Dot Blot](#)
- [Immunohistochemistry](#)
- [Immunofluorescence](#)
- [Immunoprecipitation](#)
- [Flow Cytometry](#)
- [Cell Culture](#)

CCNYL3 Antibody (N-term) - Images



CCNYL3 Antibody (N-term) (Cat. #AP12215a) western blot analysis in NCI-H460 cell line lysates (35ug/lane). This demonstrates the CCNYL3 antibody detected the CCNYL3 protein (arrow).



CCNYL3 Antibody (N-term) (Cat. #AP12215a) flow cytometric analysis of NCI-H460 cells (right histogram) compared to a negative control cell (left histogram). FITC-conjugated goat-anti-rabbit secondary antibodies were used for the analysis.