

**SNX25 Antibody (Center)**  
**Affinity Purified Rabbit Polyclonal Antibody (Pab)**  
**Catalog # AP12243c****Specification**

---

**SNX25 Antibody (Center) - Product Information**

Application	WB, FC,E
Primary Accession	<a href="#">O9H3E2</a>
Other Accession	<a href="#">NP_114159.2</a>
Reactivity	Human
Host	Rabbit
Clonality	Polyclonal
Isotype	Rabbit IgG
Calculated MW	97945
Antigen Region	399-426

**SNX25 Antibody (Center) - Additional Information****Gene ID** 83891**Other Names**

Sorting nexin-25, SNX25

**Target/Specificity**

This SNX25 antibody is generated from rabbits immunized with a KLH conjugated synthetic peptide between 399-426 amino acids from the Central region of human SNX25.

**Dilution**

WB~~1:1000

FC~~1:10~50

**Format**

Purified polyclonal antibody supplied in PBS with 0.09% (W/V) sodium azide. This antibody is purified through a protein A column, followed by peptide affinity purification.

**Storage**

Maintain refrigerated at 2-8°C for up to 2 weeks. For long term storage store at -20°C in small aliquots to prevent freeze-thaw cycles.

**Precautions**

SNX25 Antibody (Center) is for research use only and not for use in diagnostic or therapeutic procedures.

**SNX25 Antibody (Center) - Protein Information****Name** SNX25**Function** May be involved in several stages of intracellular trafficking.

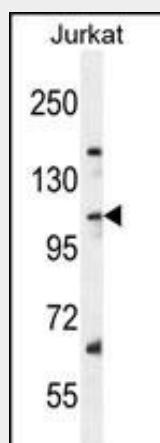
**Cellular Location**

Endosome membrane; Peripheral membrane protein Note=Detected in endosome-derived secreted vesicles (exosomes) from malignant pleural effusions

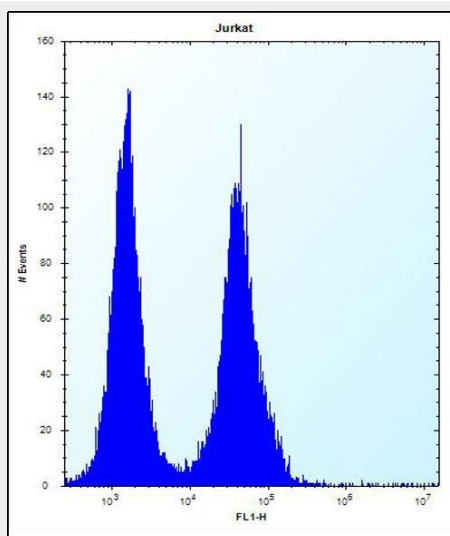
**SNX25 Antibody (Center) - Protocols**

Provided below are standard protocols that you may find useful for product applications.

- [Western Blot](#)
- [Blocking Peptides](#)
- [Dot Blot](#)
- [Immunohistochemistry](#)
- [Immunofluorescence](#)
- [Immunoprecipitation](#)
- [Flow Cytometry](#)
- [Cell Culture](#)

**SNX25 Antibody (Center) - Images**

SNX25 Antibody (Center) (Cat. #AP12243c) western blot analysis in Jurkat cell line lysates (35ug/lane). This demonstrates the SNX25 antibody detected the SNX25 protein (arrow).



SNX25 Antibody (Center) (Cat. #AP12243c) flow cytometric analysis of Jurkat cells (right

histogram) compared to a negative control cell (left histogram).FITC-conjugated donkey-anti-rabbit secondary antibodies were used for the analysis.

#### **SNX25 Antibody (Center) - Background**

SNX25 may be involved in several stages of intracellular trafficking (By similarity).

#### **SNX25 Antibody (Center) - References**

Olsen, J.V., et al. Cell 127(3):635-648(2006)

Olsen, J.V., et al. Cell 127(3):635-648(2006)

Worby, C.A., et al. Nat. Rev. Mol. Cell Biol. 3(12):919-931(2002)