

SNIP1 Antibody (N-term)
Affinity Purified Rabbit Polyclonal Antibody (Pab)
Catalog # AP12249A**Specification**

SNIP1 Antibody (N-term) - Product Information

Application	FC, WB,E
Primary Accession	Q8TAD8
Other Accession	Q5M9G6 , Q8BIZ6 , NP_078976.2
Reactivity	Human
Predicted	Mouse, Rat
Host	Rabbit
Clonality	Polyclonal
Isotype	Rabbit IgG
Calculated MW	45778
Antigen Region	91-118

SNIP1 Antibody (N-term) - Additional Information**Gene ID** 79753**Other Names**

Smad nuclear-interacting protein 1, FHA domain-containing protein SNIP1, SNIP1

Target/Specificity

This SNIP1 antibody is generated from rabbits immunized with a KLH conjugated synthetic peptide between 91-118 amino acids from the N-terminal region of human SNIP1.

Dilution

FC~~1:10~50

WB~~1:1000

E~~Use at an assay dependent concentration.

Format

Purified polyclonal antibody supplied in PBS with 0.09% (W/V) sodium azide. This antibody is purified through a protein A column, followed by peptide affinity purification.

Storage

Maintain refrigerated at 2-8°C for up to 2 weeks. For long term storage store at -20°C in small aliquots to prevent freeze-thaw cycles.

Precautions

SNIP1 Antibody (N-term) is for research use only and not for use in diagnostic or therapeutic procedures.

SNIP1 Antibody (N-term) - Protein Information**Name** SNIP1

Function Required for pre-mRNA splicing as component of the spliceosome (PubMed:[29360106](#)). As a component of the minor spliceosome, involved in the splicing of U12-type introns in pre-mRNAs (Probable). Down-regulates NF-kappa-B signaling by competing with RELA for CREBBP/EP300 binding. Involved in the microRNA (miRNA) biogenesis. May be involved in cyclin-D1/CCND1 mRNA stability through the SNARP complex which associates with both the 3'end of the CCND1 gene and its mRNA.

Cellular Location

Nucleus

Tissue Location

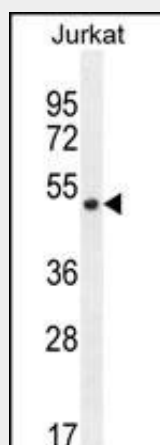
Ubiquitous, with highest expression in heart and skeletal muscle.

SNIP1 Antibody (N-term) - Protocols

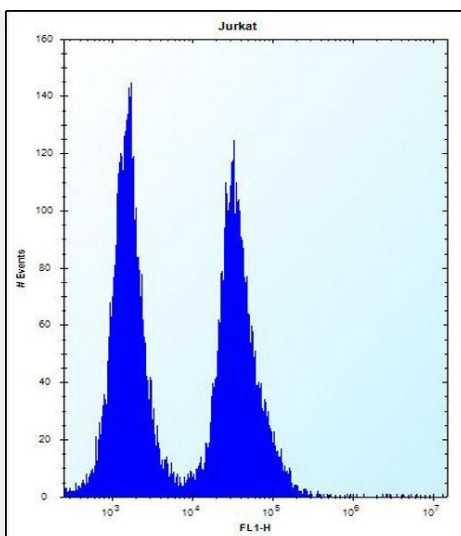
Provided below are standard protocols that you may find useful for product applications.

- [Western Blot](#)
- [Blocking Peptides](#)
- [Dot Blot](#)
- [Immunohistochemistry](#)
- [Immunofluorescence](#)
- [Immunoprecipitation](#)
- [Flow Cytometry](#)
- [Cell Culture](#)

SNIP1 Antibody (N-term) - Images



SNIP1 Antibody (N-term) (Cat. #AP12249a) western blot analysis in Jurkat cell line lysates (35ug/lane). This demonstrates the SNIP1 antibody detected the SNIP1 protein (arrow).



SNIP1 Antibody (N-term) (Cat. #AP12249a) flow cytometric analysis of Jurkat cells (right histogram) compared to a negative control cell (left histogram). FITC-conjugated donkey-anti-rabbit secondary antibodies were used for the analysis.

SNIP1 Antibody (N-term) - Background

Down-regulates NF-kappa-B signaling by competing with RELA for CREBBP/EP300 binding. SNIP1 is involved in the microRNA (miRNA) biogenesis.

SNIP1 Antibody (N-term) - References

- Bracken, C.P., et al. Cancer Res. 68(18):7621-7628(2008)
- Yu, B., et al. Proc. Natl. Acad. Sci. U.S.A. 105(29):10073-10078(2008)
- Sugiyama, N., et al. Mol. Cell Proteomics 6(6):1103-1109(2007)
- Matsuoka, S., et al. Science 316(5828):1160-1166(2007)
- Lamesch, P., et al. Genomics 89(3):307-315(2007)