

**JARID1A Antibody (C-term)**  
**Affinity Purified Rabbit Polyclonal Antibody (Pab)**  
**Catalog # AP12258b****Specification**

---

**JARID1A Antibody (C-term) - Product Information**

Application	IHC-P, WB,E
Primary Accession	<a href="#">A8MUS2</a>
Other Accession	<a href="#">NP_005047</a>
Reactivity	Human
Host	Rabbit
Clonality	Polyclonal
Isotype	Rabbit IgG
Antigen Region	1609-1641

**JARID1A Antibody (C-term) - Additional Information****Target/Specificity**

This JARID1A antibody is generated from rabbits immunized with a KLH conjugated synthetic peptide between 1609-1641 amino acids from the C-terminal region of human JARID1A.

**Dilution**

IHC-P~~1:10~50

WB~~1:1000

E~~Use at an assay dependent concentration.

**Format**

Purified polyclonal antibody supplied in PBS with 0.09% (W/V) sodium azide. This antibody is purified through a protein A column, followed by peptide affinity purification.

**Storage**

Maintain refrigerated at 2-8°C for up to 2 weeks. For long term storage store at -20°C in small aliquots to prevent freeze-thaw cycles.

**Precautions**

JARID1A Antibody (C-term) is for research use only and not for use in diagnostic or therapeutic procedures.

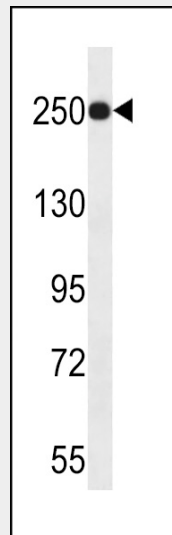
**JARID1A Antibody (C-term) - Protein Information****JARID1A Antibody (C-term) - Protocols**

Provided below are standard protocols that you may find useful for product applications.

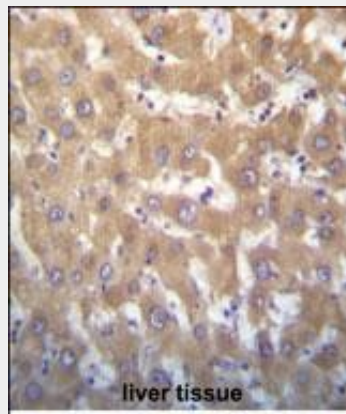
- [Western Blot](#)
- [Blocking Peptides](#)

- [Dot Blot](#)
- [Immunohistochemistry](#)
- [Immunofluorescence](#)
- [Immunoprecipitation](#)
- [Flow Cytometry](#)
- [Cell Culture](#)

#### JARID1A Antibody (C-term) - Images



JARID1A Antibody (C-term) (Cat. #AP12258b) western blot analysis in uterus tumor cell line lysates (35ug/lane). This demonstrates the JARID1A antibody detected the JARID1A protein (arrow).



JARID1A Antibody (C-term) (Cat. #AP12258b) immunohistochemistry analysis in formalin fixed and paraffin embedded human liver tissue followed by peroxidase conjugation of the secondary antibody and DAB staining. This data demonstrates the use of JARID1A Antibody (C-term) for immunohistochemistry. Clinical relevance has not been evaluated.

#### JARID1A Antibody (C-term) - Background

The protein encoded by this gene is a ubiquitously expressed nuclear protein. It binds directly, with several other proteins, to retinoblastoma protein which regulates cell proliferation. This protein also interacts with rhombotin-2 which functions distinctly in erythropoiesis and in T-cell leukemogenesis. Rhombotin-2 is thought to either directly affect the activity of the encoded protein or may indirectly modulate the functions of the retinoblastoma protein by binding to this protein.