

TLE2 Antibody (C-term)
Affinity Purified Rabbit Polyclonal Antibody (Pab)
Catalog # AP12269b**Specification**

TLE2 Antibody (C-term) - Product Information

Application	WB,E
Primary Accession	Q04725
Other Accession	NP_003251.2 , NP_001138234.1 , NP_001138233.1
Reactivity	Mouse
Host	Rabbit
Clonality	Polyclonal
Isotype	Rabbit IgG
Calculated MW	79841
Antigen Region	637-665

TLE2 Antibody (C-term) - Additional Information**Gene ID** 7089**Other Names**

Transducin-like enhancer protein 2, Enhancer of split groucho-like protein 2, ESG2, TLE2

Target/Specificity

This TLE2 antibody is generated from rabbits immunized with a KLH conjugated synthetic peptide between 637-665 amino acids from the C-terminal region of human TLE2.

Dilution

WB~~1:1000

Format

Purified polyclonal antibody supplied in PBS with 0.09% (W/V) sodium azide. This antibody is purified through a protein A column, followed by peptide affinity purification.

Storage

Maintain refrigerated at 2-8°C for up to 2 weeks. For long term storage store at -20°C in small aliquots to prevent freeze-thaw cycles.

Precautions

TLE2 Antibody (C-term) is for research use only and not for use in diagnostic or therapeutic procedures.

TLE2 Antibody (C-term) - Protein Information**Name** TLE2**Function** Transcriptional corepressor that binds to a number of transcription factors. Inhibits the

transcriptional activation mediated by CTNNB1 and TCF family members in Wnt signaling. The effects of full-length TLE family members may be modulated by association with dominant-negative AES (By similarity).

Cellular Location

Nucleus.

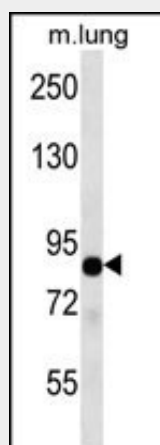
Tissue Location

In all tissues examined, mostly in heart, brain, and muscle

TLE2 Antibody (C-term) - Protocols

Provided below are standard protocols that you may find useful for product applications.

- [Western Blot](#)
- [Blocking Peptides](#)
- [Dot Blot](#)
- [Immunohistochemistry](#)
- [Immunofluorescence](#)
- [Immunoprecipitation](#)
- [Flow Cytometry](#)
- [Cell Culture](#)

TLE2 Antibody (C-term) - Images

TLE2 Antibody (C-term) (Cat. #AP12269b) western blot analysis in mouse lung tissue lysates (35ug/lane). This demonstrates the TLE2 antibody detected the TLE2 protein (arrow).

TLE2 Antibody (C-term) - Background

TLE2 is a transcriptional corepressor that binds to a number of transcription factors. Inhibits the transcriptional activation mediated by CTNNB1 and TCF family members in Wnt signaling. The effects of full-length TLE family members may be modulated by association with dominant-negative AES (By similarity).

TLE2 Antibody (C-term) - References

- He, Z., et al. J. Virol. 84(4):2047-2062(2010)
Arce, L., et al. BMC Cancer 9, 159 (2009) :
Higa, L.A., et al. Nat. Cell Biol. 8(11):1277-1283(2006)

Javed, A., et al. J. Cell. Sci. 113 (PT 12), 2221-2231 (2000) :
Grbavec, D., et al. Biochem. J. 337 (PT 1), 13-17 (1999) :