

CALU Antibody (C-term)
Affinity Purified Rabbit Polyclonal Antibody (Pab)
Catalog # AP12308b**Specification**

CALU Antibody (C-term) - Product Information

Application	WB, IHC-P,E
Primary Accession	O43852
Other Accession	O35783 , O6XLO7 , O35887 , O3T0K1 , NP_001124146.1 , NP_001210.1
Reactivity	Human
Predicted	Bovine, Mouse, Rabbit, Rat
Host	Rabbit
Clonality	Polyclonal
Isotype	Rabbit IgG
Calculated MW	37107
Antigen Region	217-246

CALU Antibody (C-term) - Additional Information**Gene ID** 813**Other Names**

Calumenin, Crocalbin, IEF SSP 9302, CALU

Target/Specificity

This CALU antibody is generated from rabbits immunized with a KLH conjugated synthetic peptide between 217-246 amino acids from the C-terminal region of human CALU.

Dilution

WB~~1:1000

IHC-P~~1:10~50

E~~Use at an assay dependent concentration.

Format

Purified polyclonal antibody supplied in PBS with 0.09% (W/V) sodium azide. This antibody is purified through a protein A column, followed by peptide affinity purification.

Storage

Maintain refrigerated at 2-8°C for up to 2 weeks. For long term storage store at -20°C in small aliquots to prevent freeze-thaw cycles.

Precautions

CALU Antibody (C-term) is for research use only and not for use in diagnostic or therapeutic procedures.

CALU Antibody (C-term) - Protein Information

Name CALU

Function Involved in regulation of vitamin K-dependent carboxylation of multiple N-terminal glutamate residues. Seems to inhibit gamma- carboxylase GGCX. Binds 7 calcium ions with a low affinity (By similarity).

Cellular Location

Endoplasmic reticulum membrane. Golgi apparatus. Secreted. Melanosome. Sarcoplasmic reticulum lumen. Note=Identified by mass spectrometry in melanosome fractions from stage I to stage IV.

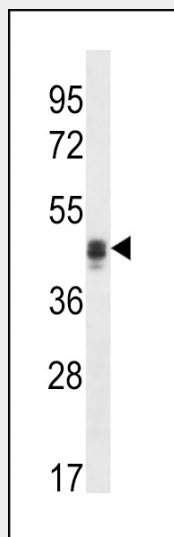
Tissue Location

Ubiquitously expressed. Expressed at high levels in heart, placenta and skeletal muscle, at lower levels in lung, kidney and pancreas and at very low levels in brain and liver

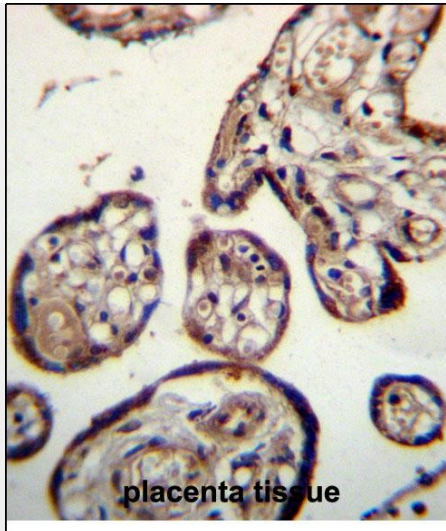
CALU Antibody (C-term) - Protocols

Provided below are standard protocols that you may find useful for product applications.

- [Western Blot](#)
- [Blocking Peptides](#)
- [Dot Blot](#)
- [Immunohistochemistry](#)
- [Immunofluorescence](#)
- [Immunoprecipitation](#)
- [Flow Cytometry](#)
- [Cell Culture](#)

CALU Antibody (C-term) - Images

CALU Antibody (C-term) (Cat. #AP12308b) western blot analysis in NCI-H292 cell line lysates (35ug/lane). This demonstrates the CALU antibody detected the CALU protein (arrow).



CALU Antibody (C-term) (Cat. #AP12308b) immunohistochemistry analysis in formalin fixed and paraffin embedded human placenta tissue followed by peroxidase conjugation of the secondary antibody and DAB staining. This data demonstrates the use of CALU Antibody (C-term) for immunohistochemistry. Clinical relevance has not been evaluated.

CALU Antibody (C-term) - Background

The product of this gene is a calcium-binding protein localized in the endoplasmic reticulum (ER) and it is involved in such ER functions as protein folding and sorting. This protein belongs to a family of multiple EF-hand proteins (CERC) that include reticulocalbin, ERC-55, and Cab45 and the product of this gene. Alternatively spliced transcript variants encoding different isoforms have been identified.

CALU Antibody (C-term) - References

Bailey, S.D., et al. Diabetes Care 33(10):2250-2253(2010)
Carlquist, J.F., et al. J. Thromb. Thrombolysis 30(3):358-364(2010)
Hernandez-Romero, D., et al. Ann. Med. 42(6):439-446(2010)
Harada, T., et al. Thromb. Res. 126(3):183-190(2010)
Voora, D., et al. Clin. Pharmacol. Ther. 87(4):445-451(2010)