

PCDHB12 Antibody (C-term)
Affinity Purified Rabbit Polyclonal Antibody (Pab)
Catalog # AP12331B

Specification

PCDHB12 Antibody (C-term) - Product Information

Application	IHC-P, WB,E
Primary Accession	Q9Y5F1
Other Accession	NP_061755.1
Reactivity	Human
Host	Rabbit
Clonality	Polyclonal
Isotype	Rabbit IgG
Calculated MW	86770
Antigen Region	766-795

PCDHB12 Antibody (C-term) - Additional Information

Gene ID 56124

Other Names

Protocadherin beta-12, PCDH-beta-12, PCDHB12

Target/Specificity

This PCDHB12 antibody is generated from rabbits immunized with a KLH conjugated synthetic peptide between 766-795 amino acids from the C-terminal region of human PCDHB12.

Dilution

IHC-P~~1:10~50

WB~~1:1000

E~~Use at an assay dependent concentration.

Format

Purified polyclonal antibody supplied in PBS with 0.09% (W/V) sodium azide. This antibody is purified through a protein A column, followed by peptide affinity purification.

Storage

Maintain refrigerated at 2-8°C for up to 2 weeks. For long term storage store at -20°C in small aliquots to prevent freeze-thaw cycles.

Precautions

PCDHB12 Antibody (C-term) is for research use only and not for use in diagnostic or therapeutic procedures.

PCDHB12 Antibody (C-term) - Protein Information

Name PCDHB12

Function Potential calcium-dependent cell-adhesion protein. May be involved in the establishment and maintenance of specific neuronal connections in the brain.

Cellular Location

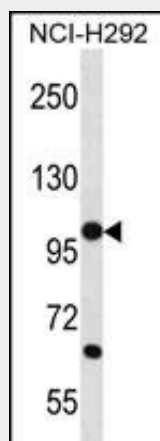
Cell membrane; Single-pass type I membrane protein

PCDHB12 Antibody (C-term) - Protocols

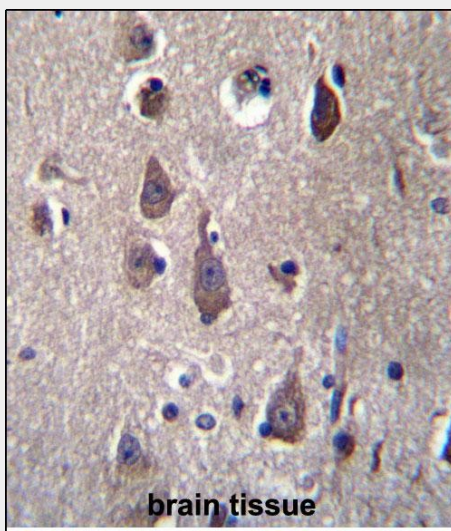
Provided below are standard protocols that you may find useful for product applications.

- [Western Blot](#)
- [Blocking Peptides](#)
- [Dot Blot](#)
- [Immunohistochemistry](#)
- [Immunofluorescence](#)
- [Immunoprecipitation](#)
- [Flow Cytometry](#)
- [Cell Culture](#)

PCDHB12 Antibody (C-term) - Images



PCDHB12 Antibody (C-term) (Cat. #AP12331b) western blot analysis in NCI-H292 cell line lysates (35ug/lane). This demonstrates the PCDHB12 antibody detected the PCDHB12 protein (arrow).



PCDHB12 Antibdy (C-term) (Cat. #AP12331b)immunohistochemistry analysis in formalin fixed and paraffin embedded human brain tissue followed by peroxidase conjugation of the secondary antibody and DAB staining.This data demonstrates the use of PCDHB12 Antibdy (C-term) for immunohistochemistry. Clinical relevance has not been evaluated.

PCDHB12 Antibody (C-term) - Background

This gene is a member of the protocadherin beta gene cluster, one of three related gene clusters tandemly linked on chromosome five. The gene clusters demonstrate an unusual genomic organization similar to that of B-cell and T-cell receptor gene clusters. The beta cluster contains 16 genes and 3 pseudogenes, each encoding 6 extracellular cadherin domains and a cytoplasmic tail that deviates from others in the cadherin superfamily. The extracellular domains interact in a homophilic manner to specify differential cell-cell connections. Unlike the alpha and gamma clusters, the transcripts from these genes are made up of only one large exon, not sharing common 3' exons as expected. These neural cadherin-like cell adhesion proteins are integral plasma membrane proteins. Their specific functions are unknown but they most likely play a critical role in the establishment and function of specific cell-cell neural connections.

PCDHB12 Antibody (C-term) - References

Vanhalst, K., et al. FEBS Lett. 495 (1-2), 120-125 (2001) :
Wu, Q., et al. Genome Res. 11(3):389-404(2001)
Nollet, F., et al. J. Mol. Biol. 299(3):551-572(2000)
Yagi, T., et al. Genes Dev. 14(10):1169-1180(2000)
Wu, Q., et al. Proc. Natl. Acad. Sci. U.S.A. 97(7):3124-3129(2000)