

PCDHGC5 Antibody (Center)
Affinity Purified Rabbit Polyclonal Antibody (Pab)
Catalog # AP12332C

Specification

PCDHGC5 Antibody (Center) - Product Information

Application	IHC-P, WB,E
Primary Accession	O9Y5F6
Other Accession	NP_115783.1
Reactivity	Mouse
Host	Rabbit
Clonality	Polyclonal
Isotype	Rabbit IgG
Antigen Region	499-526

PCDHGC5 Antibody (Center) - Additional Information

Gene ID 56097

Other Names

Protocadherin gamma-C5, PCDH-gamma-C5, PCDHGC5

Target/Specificity

This PCDHGC5 antibody is generated from rabbits immunized with a KLH conjugated synthetic peptide between 499-526 amino acids from the Central region of human PCDHGC5.

Dilution

IHC-P~~1:10~50

WB~~1:1000

E~~Use at an assay dependent concentration.

Format

Purified polyclonal antibody supplied in PBS with 0.09% (W/V) sodium azide. This antibody is purified through a protein A column, followed by peptide affinity purification.

Storage

Maintain refrigerated at 2-8°C for up to 2 weeks. For long term storage store at -20°C in small aliquots to prevent freeze-thaw cycles.

Precautions

PCDHGC5 Antibody (Center) is for research use only and not for use in diagnostic or therapeutic procedures.

PCDHGC5 Antibody (Center) - Protein Information

Name PCDHGC5

Function Potential calcium-dependent cell-adhesion protein. May be involved in the

establishment and maintenance of specific neuronal connections in the brain.

Cellular Location

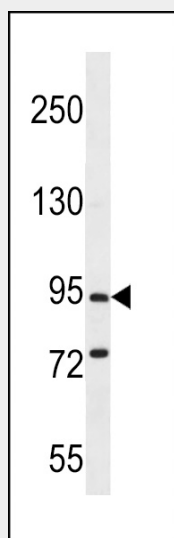
Cell membrane; Single-pass type I membrane protein

PCDHGC5 Antibody (Center) - Protocols

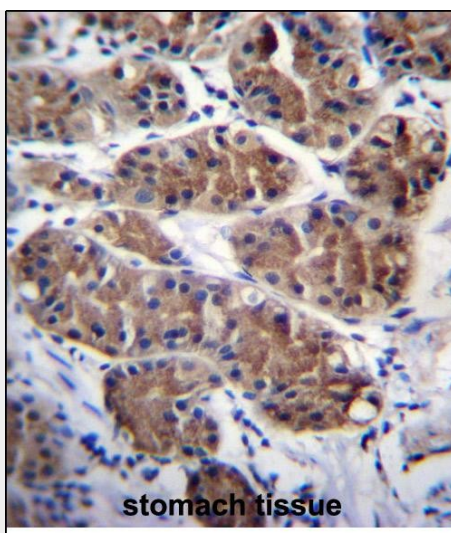
Provided below are standard protocols that you may find useful for product applications.

- [Western Blot](#)
- [Blocking Peptides](#)
- [Dot Blot](#)
- [Immunohistochemistry](#)
- [Immunofluorescence](#)
- [Immunoprecipitation](#)
- [Flow Cytometry](#)
- [Cell Culture](#)

PCDHGC5 Antibody (Center) - Images



PCDHGC5 Antibody (Center) (Cat. #AP12332c) western blot analysis in mouse brain tissue lysates (35ug/lane). This demonstrates the PCDHGC5 antibody detected the PCDHGC5 protein (arrow).



PCDHGC5 Antibody (Center) (Cat. #AP12332c) immunohistochemistry analysis in formalin fixed and paraffin embedded human stomach tissue followed by peroxidase conjugation of the secondary antibody and DAB staining. This data demonstrates the use of PCDHGC5 Antibody (Center) for immunohistochemistry. Clinical relevance has not been evaluated.

PCDHGC5 Antibody (Center) - Background

This gene is a member of the protocadherin gamma gene cluster, one of three related clusters tandemly linked on chromosome five. These gene clusters have an immunoglobulin-like organization, suggesting that a novel mechanism may be involved in their regulation and expression. The gamma gene cluster includes 22 genes divided into 3 subfamilies. Subfamily A contains 12 genes, subfamily B contains 7 genes and 2 pseudogenes, and the more distantly related subfamily C contains 3 genes. The tandem array of 22 large, variable region exons are followed by a constant region, containing 3 exons shared by all genes in the cluster. Each variable region exon encodes the extracellular region, which includes 6 cadherin ectodomains and a transmembrane region. The constant region exons encode the common cytoplasmic region. These neural cadherin-like cell adhesion proteins most likely play a critical role in the establishment and function of specific cell-cell connections in the brain. Alternative splicing has been described for the gamma cluster genes.

PCDHGC5 Antibody (Center) - References

Wu, Q., et al. Genome Res. 11(3):389-404(2001)
Nollet, F., et al. J. Mol. Biol. 299(3):551-572(2000)
Yagi, T., et al. Genes Dev. 14(10):1169-1180(2000)
Wu, Q., et al. Proc. Natl. Acad. Sci. U.S.A. 97(7):3124-3129(2000)
Wu, Q., et al. Cell 97(6):779-790(1999)