

**MDM1 Antibody (C-term)**  
**Affinity Purified Rabbit Polyclonal Antibody (Pab)**  
**Catalog # AP12344b****Specification**

---

**MDM1 Antibody (C-term) - Product Information**

Application	IHC-P, WB,E
Primary Accession	<a href="#">Q8TC05</a>
Other Accession	<a href="#">NP_059136.2</a>
Reactivity	Human
Host	Rabbit
Clonality	Polyclonal
Isotype	Rabbit IgG
Calculated MW	80735
Antigen Region	656-684

**MDM1 Antibody (C-term) - Additional Information****Gene ID** 56890**Other Names**

Nuclear protein MDM1, MDM1

**Target/Specificity**

This MDM1 antibody is generated from rabbits immunized with a KLH conjugated synthetic peptide between 656-684 amino acids from the C-terminal region of human MDM1.

**Dilution**

IHC-P~~1:10~50

WB~~1:1000

E~~Use at an assay dependent concentration.

**Format**

Purified polyclonal antibody supplied in PBS with 0.09% (W/V) sodium azide. This antibody is purified through a protein A column, followed by peptide affinity purification.

**Storage**

Maintain refrigerated at 2-8°C for up to 2 weeks. For long term storage store at -20°C in small aliquots to prevent freeze-thaw cycles.

**Precautions**

MDM1 Antibody (C-term) is for research use only and not for use in diagnostic or therapeutic procedures.

**MDM1 Antibody (C-term) - Protein Information****Name** MDM1

**Function** Microtubule-binding protein that negatively regulates centriole duplication. Binds to and stabilizes microtubules (PubMed:[26337392](#)).

**Cellular Location**

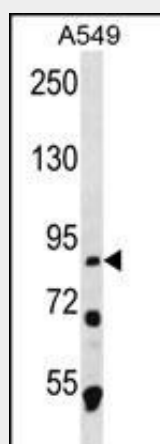
Nucleus. Cytoplasm, cytoskeleton, microtubule organizing center, centrosome. Cytoplasm, cytoskeleton, microtubule organizing center, centrosome, centriole. Note=Localizes to the centriole lumen

**MDM1 Antibody (C-term) - Protocols**

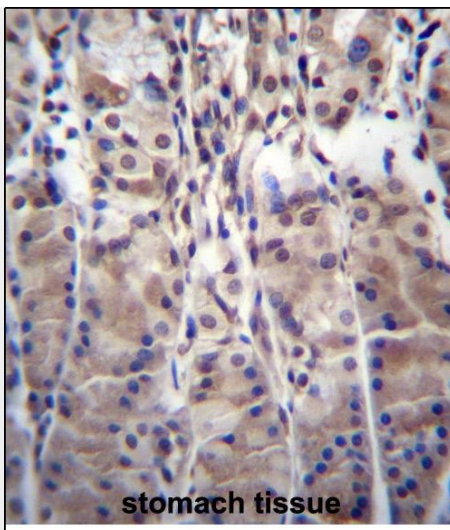
Provided below are standard protocols that you may find useful for product applications.

- [Western Blot](#)
- [Blocking Peptides](#)
- [Dot Blot](#)
- [Immunohistochemistry](#)
- [Immunofluorescence](#)
- [Immunoprecipitation](#)
- [Flow Cytometry](#)
- [Cell Culture](#)

**MDM1 Antibody (C-term) - Images**



MDM1 Antibody (C-term) (Cat. #AP12344b) western blot analysis in A549 cell line lysates (35ug/lane). This demonstrates the MDM1 antibody detected the MDM1 protein (arrow).



MDM1 Antibody (C-term) (Cat. #AP12344b) immunohistochemistry analysis in formalin fixed and paraffin embedded human stomach tissue followed by peroxidase conjugation of the secondary antibody and DAB staining. This data demonstrates the use of MDM1 Antibody (C-term) for immunohistochemistry. Clinical relevance has not been evaluated.

#### **MDM1 Antibody (C-term) - Background**

This gene encodes a nuclear protein similar to the mouse double minute 1 protein. The mouse gene is located in double minute (DM) chromatin particles and is amplified in the mouse transformed 3T3 cell line, and the protein is able to bind to p53. In mouse several transcripts have been described for this gene which result from alternative polyadenylation, splicing and exon usage.

#### **MDM1 Antibody (C-term) - References**

Chang, B., et al. Hum. Mol. Genet. 17(24):3929-3941(2008)  
Oh, J.H., et al. Mamm. Genome 16(12):942-954(2005)  
Snyder, L.C., et al. J. Biol. Chem. 263(32):17150-17158(1988)