

**MAD1L1 Antibody (N-term)**  
**Affinity Purified Rabbit Polyclonal Antibody (Pab)**  
**Catalog # AP12347a**

**Specification**

---

**MAD1L1 Antibody (N-term) - Product Information**

Application	WB,E
Primary Accession	<a href="#">O9Y6D9</a>
Other Accession	<a href="#">NP_001013859.1</a> , <a href="#">NP_001013858.1</a> , <a href="#">NP_003541.2</a>
Reactivity	Human
Host	Rabbit
Clonality	Polyclonal
Isotype	Rabbit IgG
Calculated MW	83067
Antigen Region	124-151

**MAD1L1 Antibody (N-term) - Additional Information**

**Gene ID** 8379

**Other Names**

Mitotic spindle assembly checkpoint protein MAD1, Mitotic arrest deficient 1-like protein 1, MAD1-like protein 1, Mitotic checkpoint MAD1 protein homolog, HsMAD1, hMAD1, Tax-binding protein 181, MAD1L1, MAD1, TXBP181

**Target/Specificity**

This MAD1L1 antibody is generated from rabbits immunized with a KLH conjugated synthetic peptide between 124-151 amino acids from the N-terminal region of human MAD1L1.

**Dilution**

WB~~1:1000

E~~Use at an assay dependent concentration.

**Format**

Purified polyclonal antibody supplied in PBS with 0.09% (W/V) sodium azide. This antibody is purified through a protein A column, followed by peptide affinity purification.

**Storage**

Maintain refrigerated at 2-8°C for up to 2 weeks. For long term storage store at -20°C in small aliquots to prevent freeze-thaw cycles.

**Precautions**

MAD1L1 Antibody (N-term) is for research use only and not for use in diagnostic or therapeutic procedures.

**MAD1L1 Antibody (N-term) - Protein Information**

**Name** MAD1L1

**Synonyms** MAD1, TXBP181

**Function** Component of the spindle-assembly checkpoint that prevents the onset of anaphase until all chromosomes are properly aligned at the metaphase plate (PubMed:[10049595](#), PubMed:[20133940](#), PubMed:[29162720](#)). Forms a heterotetrameric complex with the closed conformation form of MAD2L1 (C-MAD2) at unattached kinetochores during prometaphase, recruits an open conformation of MAD2L1 (O-MAD2) and promotes the conversion of O-MAD2 to C-MAD2, which ensures mitotic checkpoint signaling (PubMed:[29162720](#)).

#### **Cellular Location**

Nucleus. Chromosome, centromere, kinetochore. Nucleus envelope Cytoplasm, cytoskeleton, microtubule organizing center, centrosome. Cytoplasm, cytoskeleton, spindle. Cytoplasm, cytoskeleton, spindle pole. Note=Co- localizes with TPR at the nucleus envelope during interphase and throughout the cell cycle (PubMed:18981471, PubMed:22351768). From the beginning to the end of mitosis, it is seen to move from a diffusely nuclear distribution to the centrosome, to the spindle midzone and finally to the midbody (PubMed:9546394). Localizes to kinetochores during prometaphase (PubMed:22351768, PubMed:29162720). Does not localize to kinetochores during metaphase (PubMed:29162720) Colocalizes with NEK2 at the kinetochore (PubMed:14978040). Colocalizes with IK at spindle poles during metaphase and anaphase (PubMed:22351768).

#### **Tissue Location**

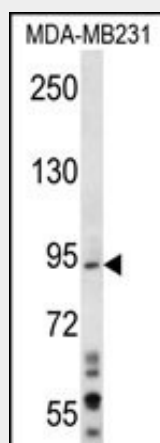
[Isoform 1]: Expressed in hepatocellular carcinomas and hepatoma cell lines (at protein level)

#### **MAD1L1 Antibody (N-term) - Protocols**

Provided below are standard protocols that you may find useful for product applications.

- [Western Blot](#)
- [Blocking Peptides](#)
- [Dot Blot](#)
- [Immunohistochemistry](#)
- [Immunofluorescence](#)
- [Immunoprecipitation](#)
- [Flow Cytometry](#)
- [Cell Culture](#)

#### **MAD1L1 Antibody (N-term) - Images**



MAD1L1 Antibody (N-term) (Cat. #AP12347a) western blot analysis in MDA-MB231 cell line lysates (35ug/lane). This demonstrates the MAD1L1 antibody detected the MAD1L1 protein (arrow).

#### **MAD1L1 Antibody (N-term) - Background**

MAD1L1 is a component of the mitotic spindle-assembly checkpoint that prevents the onset of anaphase until all chromosome are properly aligned at the metaphase plate. MAD1L1 functions as a homodimer and interacts with MAD2L1. MAD1L1 may play a role in cell cycle control and tumor suppression. Three transcript variants encoding the same protein have been found for this gene. [provided by RefSeq].

#### **MAD1L1 Antibody (N-term) - References**

Shimada, M., et al. Hum. Genet. 128(4):433-441(2010)  
Guo, Y., et al. J. Med. Genet. 47(9):616-622(2010)  
Wang, H.B., et al. J. Gastrointest. Surg. 14(8):1227-1234(2010)  
Hewitt, L., et al. J. Cell Biol. 190(1):25-34(2010)  
Ge, Z., et al. FASEB J. 24(2):579-586(2010)

#### **MAD1L1 Antibody (N-term) - Citations**

- [Kinetochores protein MAD1 participates in the DNA damage response through ataxia-telangiectasia mutated kinase-mediated phosphorylation and enhanced interaction with KU80](#)