

C12orf56 Antibody (N-term)
Affinity Purified Rabbit Polyclonal Antibody (Pab)
Catalog # AP12365a

Specification

C12orf56 Antibody (N-term) - Product Information

Application	WB, FC,E
Primary Accession	Q8IXR9
Other Accession	NP_001093146.1
Reactivity	Human, Mouse
Host	Rabbit
Clonality	Polyclonal
Isotype	Rabbit IgG
Calculated MW	71046
Antigen Region	137-165

C12orf56 Antibody (N-term) - Additional Information

Gene ID 115749

Other Names

Uncharacterized protein C12orf56, C12orf56

Target/Specificity

This C12orf56 antibody is generated from rabbits immunized with a KLH conjugated synthetic peptide between 137-165 amino acids from the N-terminal region of human C12orf56.

Dilution

WB~~1:1000

FC~~1:10~50

E~~Use at an assay dependent concentration.

Format

Purified polyclonal antibody supplied in PBS with 0.09% (W/V) sodium azide. This antibody is purified through a protein A column, followed by peptide affinity purification.

Storage

Maintain refrigerated at 2-8°C for up to 2 weeks. For long term storage store at -20°C in small aliquots to prevent freeze-thaw cycles.

Precautions

C12orf56 Antibody (N-term) is for research use only and not for use in diagnostic or therapeutic procedures.

C12orf56 Antibody (N-term) - Protein Information

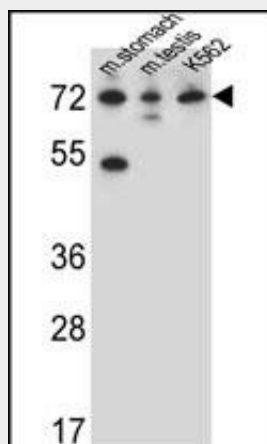
Name C12orf56

C12orf56 Antibody (N-term) - Protocols

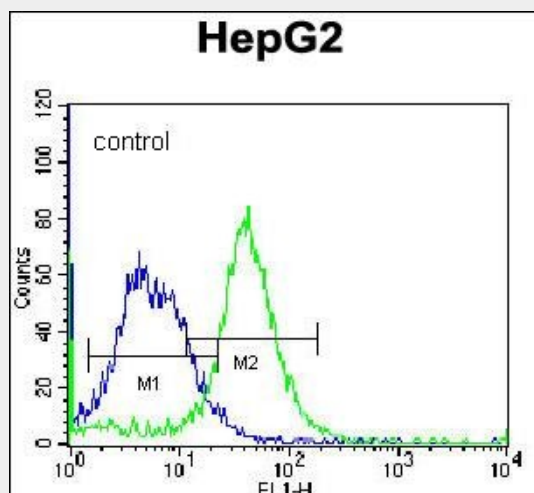
Provided below are standard protocols that you may find useful for product applications.

- [Western Blot](#)
- [Blocking Peptides](#)
- [Dot Blot](#)
- [Immunohistochemistry](#)
- [Immunofluorescence](#)
- [Immunoprecipitation](#)
- [Flow Cytometry](#)
- [Cell Culture](#)

C12orf56 Antibody (N-term) - Images



C12orf56 Antibody (N-term) (Cat. #AP12365a) western blot analysis in K562 cell line and mouse stomach, testis tissue lysates (35ug/lane). This demonstrates the C12orf56 antibody detected the C12orf56 protein (arrow).



C12orf56 Antibody (N-term) (Cat. #AP12365a) flow cytometric analysis of K562 cells (right histogram) compared to a negative control cell (left histogram). FITC-conjugated donkey-anti-rabbit secondary antibodies were used for the analysis.

C12orf56 Antibody (N-term) - References

Rose, J. Phd, et al. Mol. Med. (2010) In press :