

POMT1 Antibody (C-term)
Affinity Purified Rabbit Polyclonal Antibody (Pab)
Catalog # AP12380b

Specification

POMT1 Antibody (C-term) - Product Information

Application	FC, WB, IHC-P,E
Primary Accession	O9Y6A1
Other Accession	NP_001070833.1 , NP_001129586.1
Reactivity	Human
Host	Rabbit
Clonality	Polyclonal
Isotype	Rabbit IgG
Antigen Region	706-735

POMT1 Antibody (C-term) - Additional Information

Gene ID 10585

Other Names

Protein O-mannosyl-transferase 1, Dolichyl-phosphate-mannose--protein mannosyltransferase 1, POMT1

Target/Specificity

This POMT1 antibody is generated from rabbits immunized with a KLH conjugated synthetic peptide between 706-735 amino acids from the C-terminal region of human POMT1.

Dilution

FC~~1:10~50

WB~~1:1000

IHC-P~~1:10~50

E~~Use at an assay dependent concentration.

Format

Purified polyclonal antibody supplied in PBS with 0.09% (W/V) sodium azide. This antibody is purified through a protein A column, followed by peptide affinity purification.

Storage

Maintain refrigerated at 2-8°C for up to 2 weeks. For long term storage store at -20°C in small aliquots to prevent freeze-thaw cycles.

Precautions

POMT1 Antibody (C-term) is for research use only and not for use in diagnostic or therapeutic procedures.

POMT1 Antibody (C-term) - Protein Information

Name POMT1

Function Transfers mannosyl residues to the hydroxyl group of serine or threonine residues. Coexpression of both POMT1 and POMT2 is necessary for enzyme activity, expression of either POMT1 or POMT2 alone is insufficient (PubMed:[12369018](#), PubMed:[14699049](#), PubMed:[28512129](#)). Essentially dedicated to O-mannosylation of alpha- DAG1 and few other proteins but not of cadherins and protocadherins (PubMed:[28512129](#)).

Cellular Location

Endoplasmic reticulum membrane; Multi-pass membrane protein

Tissue Location

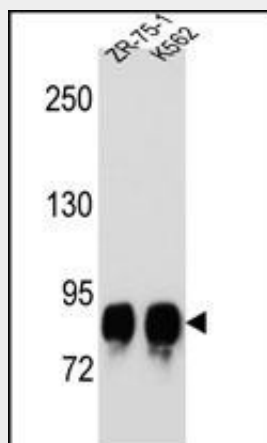
Widely expressed. Highly expressed in testis, heart and pancreas. Detected at lower levels in kidney, skeletal muscle, brain, placenta, lung and liver

POMT1 Antibody (C-term) - Protocols

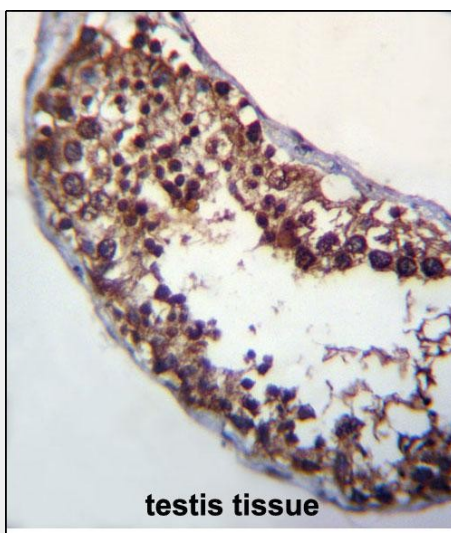
Provided below are standard protocols that you may find useful for product applications.

- [Western Blot](#)
- [Blocking Peptides](#)
- [Dot Blot](#)
- [Immunohistochemistry](#)
- [Immunofluorescence](#)
- [Immunoprecipitation](#)
- [Flow Cytometry](#)
- [Cell Culture](#)

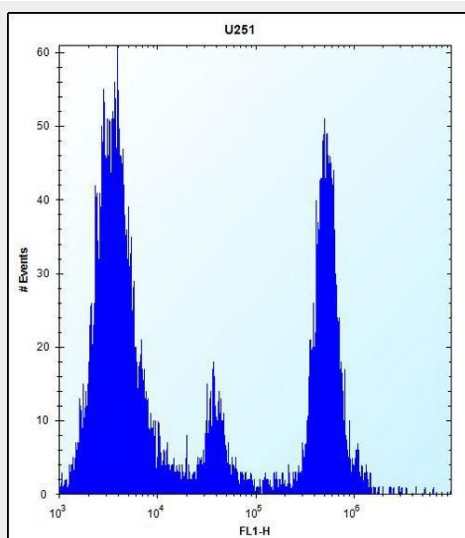
POMT1 Antibody (C-term) - Images



POMT1 Antibody (C-term) (Cat. #AP12380b) western blot analysis in ZR-75-1,K562 cell line lysates (35ug/lane).This demonstrates the POMT1 antibody detected the POMT1 protein (arrow).



POMT1 Antibody (C-term) (Cat. #AP12380b) immunohistochemistry analysis in formalin fixed and paraffin embedded human testis tissue followed by peroxidase conjugation of the secondary antibody and DAB staining. This data demonstrates the use of POMT1 Antibody (C-term) for immunohistochemistry. Clinical relevance has not been evaluated.



POMT1 Antibody (C-term) (Cat. #AP12380b) flow cytometric analysis of U251 cells (right histogram) compared to a negative control cell (left histogram). FITC-conjugated goat-anti-rabbit secondary antibodies were used for the analysis.

POMT1 Antibody (C-term) - Background

The protein encoded by this gene is an O-mannosyltransferase that requires interaction with the product of the POMT2 gene for enzymatic function. The encoded protein is found in the membrane of the endoplasmic reticulum. Defects in this gene are a cause of Walker-Warburg syndrome (WWS) and limb-girdle muscular dystrophy type 2K (LGMD2K). Several transcript variants encoding different isoforms have been found for this gene.

POMT1 Antibody (C-term) - References

Manya, H., et al. J. Biochem. 147(3):337-344(2010)
Jugessur, A., et al. PLoS ONE 5 (7), E11493 (2010) :

Cotarelo, R.P., et al. Clin. Genet. 76(1):108-112(2009)
Mercuri, E., et al. Neurology 72(21):1802-1809(2009)
Judas, M., et al. Neuropediatrics 40(1):6-14(2009)