

SLC12A7 Antibody (N-term)
Affinity Purified Rabbit Polyclonal Antibody (Pab)
Catalog # AP12392a**Specification**

SLC12A7 Antibody (N-term) - Product Information

Application	WB, IHC-P,E
Primary Accession	O9Y666
Other Accession	NP_006589.2
Reactivity	Human
Host	Rabbit
Clonality	Polyclonal
Isotype	Rabbit IgG
Calculated MW	119106
Antigen Region	89-117

SLC12A7 Antibody (N-term) - Additional Information**Gene ID** 10723**Other Names**

Solute carrier family 12 member 7, Electroneutral potassium-chloride cotransporter 4, K-Cl cotransporter 4, SLC12A7, KCC4

Target/Specificity

This SLC12A7 antibody is generated from rabbits immunized with a KLH conjugated synthetic peptide between 89-117 amino acids from the N-terminal region of human SLC12A7.

Dilution

WB~~1:1000

IHC-P~~1:10~50

Format

Purified polyclonal antibody supplied in PBS with 0.09% (W/V) sodium azide. This antibody is purified through a protein A column, followed by peptide affinity purification.

Storage

Maintain refrigerated at 2-8°C for up to 2 weeks. For long term storage store at -20°C in small aliquots to prevent freeze-thaw cycles.

Precautions

SLC12A7 Antibody (N-term) is for research use only and not for use in diagnostic or therapeutic procedures.

SLC12A7 Antibody (N-term) - Protein Information**Name** SLC12A7 ([HGNC:10915](#))

Function Mediates electroneutral potassium-chloride cotransport when activated by cell swelling (PubMed:[10913127](#)). May mediate K(+) uptake into Deiters' cells in the cochlea and contribute to K(+) recycling in the inner ear. Important for the survival of cochlear outer and inner hair cells and the maintenance of the organ of Corti. May be required for basolateral Cl(-) extrusion in the kidney and contribute to renal acidification (By similarity).

Cellular Location

Cell membrane; Multi-pass membrane protein

Tissue Location

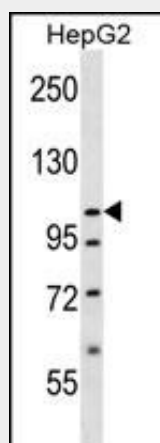
Detected in muscle, brain, lung, heart and kidney.

SLC12A7 Antibody (N-term) - Protocols

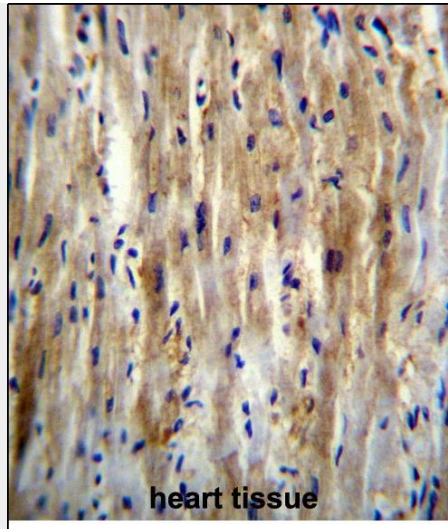
Provided below are standard protocols that you may find useful for product applications.

- [Western Blot](#)
- [Blocking Peptides](#)
- [Dot Blot](#)
- [Immunohistochemistry](#)
- [Immunofluorescence](#)
- [Immunoprecipitation](#)
- [Flow Cytometry](#)
- [Cell Culture](#)

SLC12A7 Antibody (N-term) - Images



SLC12A7 Antibody (N-term) (Cat. #AP12392a) western blot analysis in HepG2 cell line lysates (35ug/lane). This demonstrates the SLC12A7 antibody detected the SLC12A7 protein (arrow).



SLC12A7 Antibody (N-term) (Cat. #AP12392a) immunohistochemistry analysis in formalin fixed and paraffin embedded human heart tissue followed by peroxidase conjugation of the secondary antibody and DAB staining. This data demonstrates the use of SLC12A7 Antibody (N-term) for immunohistochemistry. Clinical relevance has not been evaluated.

SLC12A7 Antibody (N-term) - Background

SLC12A7 mediates electroneutral potassium-chloride cotransport when activated by cell swelling. May mediate K(+) uptake into Deiters' cells in the cochlea and contribute to K(+) recycling in the inner ear. Important for the survival of cochlear outer and inner hair cells and the maintenance of the organ of Corti. May be required for basolateral Cl(-) extrusion in the kidney and contribute to renal acidification (By similarity).

SLC12A7 Antibody (N-term) - References

Hartmann, A.M., et al. J. Biol. Chem. 285(31):23994-24002(2010)
Kamatani, Y., et al. Nat. Genet. 42(3):210-215(2010)
Chen, Y.F., et al. Cancer Res. 69(22):8585-8593(2009)
Fujii, T., et al. J. Biol. Chem. 284(1):619-629(2009)
Ji, W., et al. Nat. Genet. 40(5):592-599(2008)