

Dok5 Antibody (PTB domain)
Purified Rabbit Polyclonal Antibody (Pab)
Catalog # AP12411a**Specification**

Dok5 Antibody (PTB domain) - Product Information

Application	WB,E
Primary Accession	O9P104
Other Accession	NP_060901.2
Reactivity	Human
Host	Rabbit
Clonality	Polyclonal
Isotype	Rabbit IgG
Calculated MW	35464

Dok5 Antibody (PTB domain) - Additional Information**Gene ID** 55816**Other Names**

Docking protein 5, Downstream of tyrosine kinase 5, Insulin receptor substrate 6, IRS-6, IRS6, DOK5, C20orf180

Target/Specificity

This Dok5 antibody is generated from rabbits immunized with a recombinant protein (GST-tag removed) from human Dok5.

Dilution

WB~~1:1000

Format

Purified polyclonal antibody supplied in PBS with 0.09% (W/V) sodium azide. This antibody is prepared by Saturated Ammonium Sulfate (SAS) precipitation followed by dialysis against PBS.

Storage

Maintain refrigerated at 2-8°C for up to 2 weeks. For long term storage store at -20°C in small aliquots to prevent freeze-thaw cycles.

Precautions

Dok5 Antibody (PTB domain) is for research use only and not for use in diagnostic or therapeutic procedures.

Dok5 Antibody (PTB domain) - Protein Information**Name** DOK5**Synonyms** C20orf180

Function DOK proteins are enzymatically inert adaptor or scaffolding proteins. They provide a docking platform for the assembly of multimolecular signaling complexes. DOK5 functions in RET-mediated neurite outgrowth and plays a positive role in activation of the MAP kinase pathway. Putative link with downstream effectors of RET in neuronal differentiation.

Tissue Location

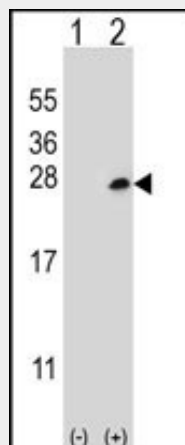
Highest expression in skeletal muscle, lower in brain, heart and kidney. Also detected in activated peripheral blood T- lymphocytes.

Dok5 Antibody (PTB domain) - Protocols

Provided below are standard protocols that you may find useful for product applications.

- [Western Blot](#)
- [Blocking Peptides](#)
- [Dot Blot](#)
- [Immunohistochemistry](#)
- [Immunofluorescence](#)
- [Immunoprecipitation](#)
- [Flow Cytometry](#)
- [Cell Culture](#)

Dok5 Antibody (PTB domain) - Images



Western blot analysis of Dok5 (arrow) using rabbit polyclonal Dok5 Antibody (PTB domain) (Cat. #AP12411a). 293 cell lysates (2 ug/lane) either nontransfected (Lane 1) or transiently transfected (Lane 2) with the Dok5 gene.

Dok5 Antibody (PTB domain) - Background

DOK proteins are enzymatically inert adaptor or scaffolding proteins. They provide a docking platform for the assembly of multimolecular signaling complexes. DOK5 functions in RET-mediated neurite outgrowth and plays a positive role in activation of the MAP kinase pathway. Putative link with downstream effectors of RET in neuronal differentiation.

Dok5 Antibody (PTB domain) - References

Liu, X., et al. J Am Acad Child Adolesc Psychiatry 49(1):33-41(2010)
Tabassum, R., et al. BMC Med. Genet. 11, 35 (2010) :
Shi, L., et al. Cell. Signal. 18(11):1995-2003(2006)

Cai, D., et al. J. Biol. Chem. 278(28):25323-25330(2003)

Favre, C., et al. Genes Immun. 4(1):40-45(2003)