

**SET1B Antibody (C-term)**  
**Affinity Purified Rabbit Polyclonal Antibody (Pab)**  
**Catalog # AP12413b**

**Specification**

---

**SET1B Antibody (C-term) - Product Information**

Application	WB,E
Primary Accession	<a href="#">Q9UPS6</a>
Other Accession	<a href="#">Q66J90</a> , <a href="#">Q8CFT2</a> , <a href="#">Q5F3P8</a> , <a href="#">Q1LY77</a> , <a href="#">NP_055863.1</a>
Reactivity	Mouse
Predicted	Zebrafish, Chicken, Xenopus
Host	Rabbit
Clonality	Polyclonal
Isotype	Rabbit IgG
Antigen Region	1806-1839

**SET1B Antibody (C-term) - Additional Information**

**Gene ID** 23067

**Other Names**

Histone-lysine N-methyltransferase SETD1B, Lysine N-methyltransferase 2G, SET domain-containing protein 1B, hSET1B, SETD1B, KIAA1076, KMT2G, SET1B

**Target/Specificity**

This SET1B antibody is generated from rabbits immunized with a KLH conjugated synthetic peptide between 1806-1839 amino acids from the C-terminal region of human SET1B.

**Dilution**

WB~~1:1000

E~~Use at an assay dependent concentration.

**Format**

Purified polyclonal antibody supplied in PBS with 0.09% (W/V) sodium azide. This antibody is purified through a protein A column, followed by peptide affinity purification.

**Storage**

Maintain refrigerated at 2-8°C for up to 2 weeks. For long term storage store at -20°C in small aliquots to prevent freeze-thaw cycles.

**Precautions**

SET1B Antibody (C-term) is for research use only and not for use in diagnostic or therapeutic procedures.

**SET1B Antibody (C-term) - Protein Information**

**Name** SETD1B

**Synonyms** KIAA1076, KMT2G, SET1B

**Function** Histone methyltransferase that catalyzes methyl group transfer from S-adenosyl-L-methionine to the epsilon-amino group of 'Lys-4' of histone H3 (H3K4) via a non-processive mechanism (PubMed:[17355966](#), PubMed:[25561738](#)). Part of chromatin remodeling machinery, forms H3K4me1, H3K4me2 and H3K4me3 methylation marks at active chromatin sites where transcription and DNA repair take place (PubMed:[17355966](#), PubMed:[25561738](#)). Plays an essential role in regulating the transcriptional programming of multipotent hematopoietic progenitor cells and lymphoid lineage specification during hematopoiesis (By similarity).

**Cellular Location**

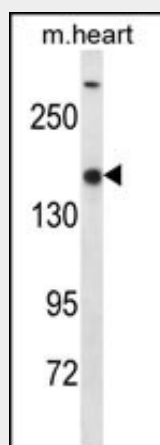
Nucleus. Nucleus speckle. Chromosome. Cytoplasm Note=Localizes to a largely non-overlapping set of euchromatic nuclear speckles with SETD1A, suggesting that SETD1A and SET1B each bind to a unique set of target genes (Probable) (PubMed:[17355966](#)). Predominantly nuclear (PubMed:[38003223](#)).

**SET1B Antibody (C-term) - Protocols**

Provided below are standard protocols that you may find useful for product applications.

- [Western Blot](#)
- [Blocking Peptides](#)
- [Dot Blot](#)
- [Immunohistochemistry](#)
- [Immunofluorescence](#)
- [Immunoprecipitation](#)
- [Flow Cytometry](#)
- [Cell Culture](#)

**SET1B Antibody (C-term) - Images**



SET1B Antibody (C-term) (Cat. #AP12413b) western blot analysis in mouse heart tissue lysates (35ug/lane). This demonstrates the SET1B antibody detected the SET1B protein (arrow).

**SET1B Antibody (C-term) - Background**

SET1B is a component of a histone methyltransferase complex that produces trimethylated histone H3 at Lys4 (Lee et al., 2007 [PubMed [17355966](#)]).

### **SET1B Antibody (C-term) - References**

Wu, M., et al. Mol. Cell. Biol. 28(24):7337-7344(2008)  
Lee, J.H., et al. Mol. Cell. Biol. 28(2):609-618(2008)  
Lee, J.H., et al. J. Biol. Chem. 282(18):13419-13428(2007)