

CNN2 Antibody (N-term)
Affinity Purified Rabbit Polyclonal Antibody (Pab)
Catalog # AP12417a

Specification

CNN2 Antibody (N-term) - Product Information

Application	IHC-P, WB,E
Primary Accession	Q99439
Other Accession	NP_004359.1 , NP_958434.1
Reactivity	Human
Host	Rabbit
Clonality	Polyclonal
Isotype	Rabbit IgG
Calculated MW	33697
Antigen Region	9-36

CNN2 Antibody (N-term) - Additional Information

Gene ID 1265

Other Names

Calponin-2, Calponin H2, smooth muscle, Neutral calponin, CNN2

Target/Specificity

This CNN2 antibody is generated from rabbits immunized with a KLH conjugated synthetic peptide between 9-36 amino acids from the N-terminal region of human CNN2.

Dilution

IHC-P~~1:10~50

WB~~1:1000

E~~Use at an assay dependent concentration.

Format

Purified polyclonal antibody supplied in PBS with 0.09% (W/V) sodium azide. This antibody is purified through a protein A column, followed by peptide affinity purification.

Storage

Maintain refrigerated at 2-8°C for up to 2 weeks. For long term storage store at -20°C in small aliquots to prevent freeze-thaw cycles.

Precautions

CNN2 Antibody (N-term) is for research use only and not for use in diagnostic or therapeutic procedures.

CNN2 Antibody (N-term) - Protein Information

Name CNN2

Function Thin filament-associated protein that is implicated in the regulation and modulation of smooth muscle contraction. It is capable of binding to actin, calmodulin and tropomyosin. The interaction of calponin with actin inhibits the actomyosin Mg-ATPase activity.

Tissue Location

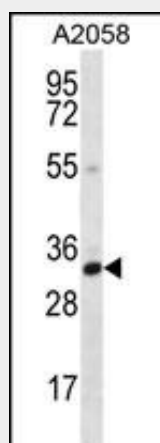
Heart and smooth muscle.

CNN2 Antibody (N-term) - Protocols

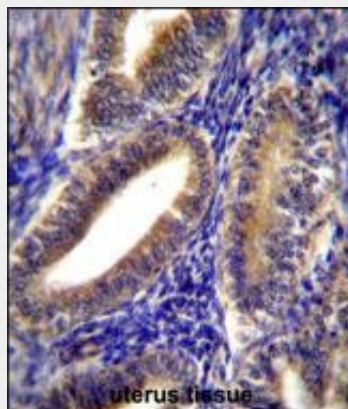
Provided below are standard protocols that you may find useful for product applications.

- [Western Blot](#)
- [Blocking Peptides](#)
- [Dot Blot](#)
- [Immunohistochemistry](#)
- [Immunofluorescence](#)
- [Immunoprecipitation](#)
- [Flow Cytometry](#)
- [Cell Culture](#)

CNN2 Antibody (N-term) - Images



CNN2 Antibody (N-term) (Cat. #AP12417a) western blot analysis in A2058 cell line lysates (35ug/lane). This demonstrates the CNN2 antibody detected the CNN2 protein (arrow).



CNN2 Antibody (N-term) (Cat. #AP12417a) immunohistochemistry analysis in formalin fixed and paraffin embedded human uterus tissue followed by peroxidase conjugation of the secondary

antibody and DAB staining. This data demonstrates the use of CNN2 Antibody (N-term) for immunohistochemistry. Clinical relevance has not been evaluated.

CNN2 Antibody (N-term) - Background

The protein encoded by this gene, which can bind actin, calmodulin, troponin C, and tropomyosin, may function in the structural organization of actin filaments. The encoded protein could play a role in smooth muscle contraction and cell adhesion. Two transcript variants encoding different isoforms have been found for this gene.

CNN2 Antibody (N-term) - References

Rikova, K., et al. Cell 131(6):1190-1203(2007)
Hossain, M.M., et al. J. Biol. Chem. 280(51):42442-42453(2005)
Rush, J., et al. Nat. Biotechnol. 23(1):94-101(2005)
Gevaert, K., et al. Nat. Biotechnol. 21(5):566-569(2003)
Hossain, M.M., et al. Am. J. Physiol., Cell Physiol. 284 (1), C156-C167 (2003) :