

SPATA7 Antibody (C-term)
Affinity Purified Rabbit Polyclonal Antibody (Pab)
Catalog # AP12419b**Specification**

SPATA7 Antibody (C-term) - Product Information

| | |
|-------------------|--|
| Application | WB,E |
| Primary Accession | O9P0W8 |
| Other Accession | NP_060888.2 , NP_001035518.1 |
| Reactivity | Human |
| Host | Rabbit |
| Clonality | Polyclonal |
| Isotype | Rabbit IgG |
| Calculated MW | 67719 |
| Antigen Region | 374-401 |

SPATA7 Antibody (C-term) - Additional Information**Gene ID** 55812**Other Names**

Spermatogenesis-associated protein 7, HSD-31, Spermatogenesis-associated protein HSD3, SPATA7, HSD3

Target/Specificity

This SPATA7 antibody is generated from rabbits immunized with a KLH conjugated synthetic peptide between 374-401 amino acids from the C-terminal region of human SPATA7.

Dilution

WB~~1:1000

Format

Purified polyclonal antibody supplied in PBS with 0.09% (W/V) sodium azide. This antibody is purified through a protein A column, followed by peptide affinity purification.

Storage

Maintain refrigerated at 2-8°C for up to 2 weeks. For long term storage store at -20°C in small aliquots to prevent freeze-thaw cycles.

Precautions

SPATA7 Antibody (C-term) is for research use only and not for use in diagnostic or therapeutic procedures.

SPATA7 Antibody (C-term) - Protein Information**Name** SPATA7**Synonyms** HSD3

Function Involved in the maintenance of both rod and cone photoreceptor cells (By similarity). It is required for recruitment and proper localization of RPGRIP1 to the photoreceptor connecting cilium (CC), as well as photoreceptor-specific localization of proximal CC proteins at the distal CC (By similarity). Maintenance of protein localization at the photoreceptor-specific distal CC is essential for normal microtubule stability and to prevent photoreceptor degeneration (By similarity).

Cellular Location

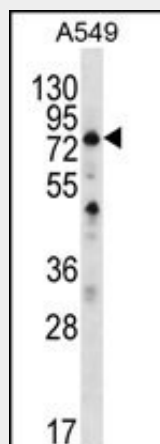
Cytoplasm, cytoskeleton, cilium axoneme. Cytoplasm, cytoskeleton, cilium basal body. Cytoplasm, cytoskeleton. Cell projection, cilium, photoreceptor outer segment
{ECO:0000250|UniProtKB:Q80VP2}. Note=Localizes to the microtubule network.

SPATA7 Antibody (C-term) - Protocols

Provided below are standard protocols that you may find useful for product applications.

- [Western Blot](#)
- [Blocking Peptides](#)
- [Dot Blot](#)
- [Immunohistochemistry](#)
- [Immunofluorescence](#)
- [Immunoprecipitation](#)
- [Flow Cytometry](#)
- [Cell Culture](#)

SPATA7 Antibody (C-term) - Images



SPATA7 Antibody (C-term) (Cat. #AP12419b) western blot analysis in A549 cell line lysates (35ug/lane). This demonstrates the SPATA7 antibody detected the SPATA7 protein (arrow).

SPATA7 Antibody (C-term) - Background

This gene, originally isolated from testis, is also expressed in retina. Mutations in this gene are associated with Leber congenital amaurosis and juvenile retinitis pigmentosa. Alternatively spliced transcript variants encoding different isoforms have been found for this gene.

SPATA7 Antibody (C-term) - References

Perrault, I., et al. Hum. Mutat. 31 (3), E1241-E1250 (2010) :
Wang, H., et al. Am. J. Hum. Genet. 84(3):380-387(2009)
Zhang, X., et al. J. Mol. Med. 81(6):380-387(2003)
Heilig, R., et al. Nature 421(6923):601-607(2003)