

**SENP7 Antibody (C-term)**  
**Purified Rabbit Polyclonal Antibody (Pab)**  
**Catalog # AP1241a****Specification**

---

**SENP7 Antibody (C-term) - Product Information**

|                   |                        |
|-------------------|------------------------|
| Application       | WB,E                   |
| Primary Accession | <a href="#">Q9BOF6</a> |
| Other Accession   | <a href="#">A7MBJ2</a> |
| Reactivity        | Human, Mouse           |
| Predicted         | Bovine                 |
| Host              | Rabbit                 |
| Clonality         | Polyclonal             |
| Isotype           | Rabbit IgG             |
| Calculated MW     | 119658                 |
| Antigen Region    | 709-740                |

**SENP7 Antibody (C-term) - Additional Information****Gene ID** 57337**Other Names**

Sentrin-specific protease 7, SUMO-1-specific protease 2, Sentrin/SUMO-specific protease SENP7, SENP7, KIAA1707, SSP2, SUSP2

**Target/Specificity**

This SENP7 antibody is generated from rabbits immunized with a KLH conjugated synthetic peptide between 709-740 amino acids from the C-terminal region of human SENP7.

**Dilution**

WB~~1:1000

**Format**

Purified polyclonal antibody supplied in PBS with 0.09% (W/V) sodium azide. This antibody is prepared by Saturated Ammonium Sulfate (SAS) precipitation followed by dialysis against PBS.

**Storage**

Maintain refrigerated at 2-8°C for up to 2 weeks. For long term storage store at -20°C in small aliquots to prevent freeze-thaw cycles.

**Precautions**

SENP7 Antibody (C-term) is for research use only and not for use in diagnostic or therapeutic procedures.

**SENP7 Antibody (C-term) - Protein Information****Name** SENP7 {ECO:0000303|Ref.2, ECO:0000312|HGNC:HGNC:30402}

**Function** Protease that acts as a positive regulator of the cGAS-STING pathway by catalyzing desumoylation of CGAS. Desumoylation of CGAS promotes DNA-binding activity of CGAS, subsequent oligomerization and activation (By similarity). Deconjugates SUMO2 and SUMO3 from targeted proteins, but not SUMO1 (PubMed:[18799455](#)). Catalyzes the deconjugation of poly-SUMO2 and poly-SUMO3 chains (PubMed:[18799455](#)). Has very low efficiency in processing full-length SUMO proteins to their mature forms (PubMed:[18799455](#)).

**Cellular Location**

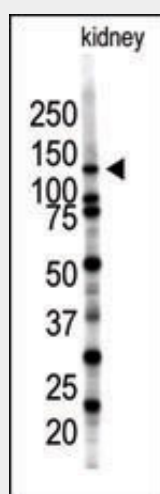
Cytoplasm {ECO:0000250|UniProtKB:Q8BUH8}.

**SEN7 Antibody (C-term) - Protocols**

Provided below are standard protocols that you may find useful for product applications.

- [Western Blot](#)
- [Blocking Peptides](#)
- [Dot Blot](#)
- [Immunohistochemistry](#)
- [Immunofluorescence](#)
- [Immunoprecipitation](#)
- [Flow Cytometry](#)
- [Cell Culture](#)

**SEN7 Antibody (C-term) - Images**



Western blot analysis of SEN7 polyclonal antibody (Cat. #AP1241a) in mouse kidney tissue lysate (35ug/lane). SEN7(arrow) was detected using the purified Pab.

**SEN7 Antibody (C-term) - Background**

SEN7 is a protease that may be involved in two essential functions in the SUMO pathway: processing of full-length SUMO1, SUMO2 and SUMO3 to their mature conjugatable forms and/or deconjugation of SUMO1, SUMO2 and SUMO3 from targeted substrate proteins.

**SEN7 Antibody (C-term) - References**

Wiemann, S., et al., Genome Res. 11(3):422-435 (2001).  
Nagase, T., et al., DNA Res. 7(6):347-355 (2000).