

CL052 Antibody (N-term)
Affinity Purified Rabbit Polyclonal Antibody (Pab)
Catalog # AP12423A**Specification**

CL052 Antibody (N-term) - Product Information

Application	WB,E
Primary Accession	O96K30
Other Accession	NP_116237.1
Reactivity	Human
Host	Rabbit
Clonality	Polyclonal
Isotype	Rabbit IgG
Calculated MW	28619
Antigen Region	44-72

CL052 Antibody (N-term) - Additional Information**Gene ID** 84934**Other Names**

RBPJ-interacting and tubulin-associated protein 1, RBPJ-interacting and tubulin-associated protein, RITA1, C12orf52, RITA

Target/Specificity

This CL052 antibody is generated from rabbits immunized with a KLH conjugated synthetic peptide between 44-72 amino acids from the N-terminal region of human CL052.

Dilution

WB~~1:1000

E~~Use at an assay dependent concentration.

Format

Purified polyclonal antibody supplied in PBS with 0.09% (W/V) sodium azide. This antibody is purified through a protein A column, followed by peptide affinity purification.

Storage

Maintain refrigerated at 2-8°C for up to 2 weeks. For long term storage store at -20°C in small aliquots to prevent freeze-thaw cycles.

Precautions

CL052 Antibody (N-term) is for research use only and not for use in diagnostic or therapeutic procedures.

CL052 Antibody (N-term) - Protein Information**Name** RITA1

Synonyms C12orf52, RITA

Function Tubulin-binding protein that acts as a negative regulator of Notch signaling pathway. Shuttles between the cytoplasm and the nucleus and mediates the nuclear export of RBPJ/RBPSUH, thereby preventing the interaction between RBPJ/RBPSUH and NICD product of Notch proteins (Notch intracellular domain), leading to down-regulate Notch-mediated transcription. May play a role in neurogenesis.

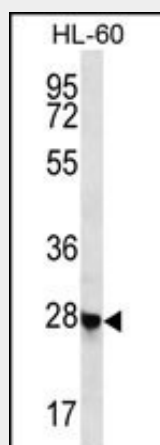
Cellular Location

Cytoplasm. Nucleus. Cytoplasm, cytoskeleton, microtubule organizing center, centrosome
Note=Shuttles rapidly between the cytoplasm and the nucleus. The function of centrosome localization is still unclear

CL052 Antibody (N-term) - Protocols

Provided below are standard protocols that you may find useful for product applications.

- [Western Blot](#)
- [Blocking Peptides](#)
- [Dot Blot](#)
- [Immunohistochemistry](#)
- [Immunofluorescence](#)
- [Immunoprecipitation](#)
- [Flow Cytometry](#)
- [Cell Culture](#)

CL052 Antibody (N-term) - Images

CL052 Antibody (N-term) (Cat. #AP12423a) western blot analysis in HL-60 cell line lysates (35ug/lane). This demonstrates the CL052 antibody detected the CL052 protein (arrow).

CL052 Antibody (N-term) - References

Lamesch, P., et al. Genomics 89(3):307-315(2007)