

SMAP2 Antibody (Center)
Affinity Purified Rabbit Polyclonal Antibody (Pab)
Catalog # AP12427C**Specification**

SMAP2 Antibody (Center) - Product Information

Application	IHC-P, WB,E
Primary Accession	Q8WU79
Other Accession	NP_073570.1
Reactivity	Human
Host	Rabbit
Clonality	Polyclonal
Isotype	Rabbit IgG
Calculated MW	46786
Antigen Region	111-140

SMAP2 Antibody (Center) - Additional Information**Gene ID** 64744**Other Names**

Stromal membrane-associated protein 2, Stromal membrane-associated protein 1-like, SMAP2, SMAP1L

Target/Specificity

This SMAP2 antibody is generated from rabbits immunized with a KLH conjugated synthetic peptide between 111-140 amino acids from the Central region of human SMAP2.

Dilution

IHC-P~~1:10~50

WB~~1:1000

E~~Use at an assay dependent concentration.

Format

Purified polyclonal antibody supplied in PBS with 0.09% (W/V) sodium azide. This antibody is purified through a protein A column, followed by peptide affinity purification.

Storage

Maintain refrigerated at 2-8°C for up to 2 weeks. For long term storage store at -20°C in small aliquots to prevent freeze-thaw cycles.

Precautions

SMAP2 Antibody (Center) is for research use only and not for use in diagnostic or therapeutic procedures.

SMAP2 Antibody (Center) - Protein Information**Name** SMAP2

Synonyms SMAP1L

Function GTPase activating protein that acts on ARF1. Can also activate ARF6 (in vitro). May play a role in clathrin-dependent retrograde transport from early endosomes to the trans-Golgi network (By similarity).

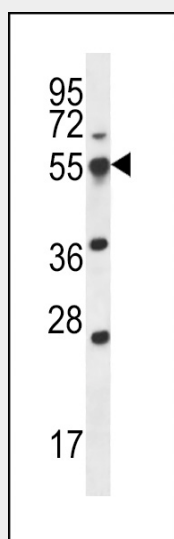
Cellular Location

Cytoplasm. Note=Detected in multiple foci throughout the cytoplasm and in juxtanuclear structures.

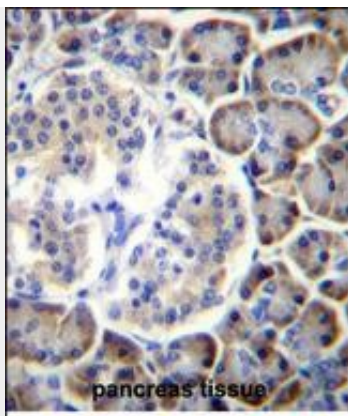
SMAP2 Antibody (Center) - Protocols

Provided below are standard protocols that you may find useful for product applications.

- [Western Blot](#)
- [Blocking Peptides](#)
- [Dot Blot](#)
- [Immunohistochemistry](#)
- [Immunofluorescence](#)
- [Immunoprecipitation](#)
- [Flow Cytometry](#)
- [Cell Culture](#)

SMAP2 Antibody (Center) - Images

SMAP2 Antibody (Center) (Cat. #AP12427c) western blot analysis in 293 cell line lysates (35ug/lane). This demonstrates the SMAP2 antibody detected the SMAP2 protein (arrow).



SMAP2 Antibody (Center) (Cat. #AP12427c) immunohistochemistry analysis in formalin fixed and paraffin embedded human pancreas tissue followed by peroxidase conjugation of the secondary antibody and DAB staining. This data demonstrates the use of SMAP2 Antibody (Center) for immunohistochemistry. Clinical relevance has not been evaluated.

SMAP2 Antibody (Center) - Background

SMAP2 is a GTPase activating protein that acts on ARF1. Can also activate ARF6 (in vitro). May play a role in clathrin-dependent retrograde transport from early endosomes to the trans-Golgi network (By similarity).

SMAP2 Antibody (Center) - References

Lamesch, P., et al. Genomics 89(3):307-315(2007)
Natsume, W., et al. Mol. Biol. Cell 17(6):2592-2603(2006)