

**CFAP69 Antibody (N-term)**  
**Affinity Purified Rabbit Polyclonal Antibody (Pab)**  
**Catalog # AP12429a****Specification**

---

**CFAP69 Antibody (N-term) - Product Information**

Application	WB, IHC-P,E
Primary Accession	<a href="#">A5D8W1</a>
Other Accession	<a href="#">NP_001034795.2</a> , <a href="#">NP_001153610.1</a>
Reactivity	Human
Host	Rabbit
Clonality	Polyclonal
Isotype	Rabbit IgG
Antigen Region	150-178

**CFAP69 Antibody (N-term) - Additional Information****Gene ID** 79846**Other Names**

Cilia- and flagella-associated protein 69 {ECO:0000312|HGNC:HGNC:26107}, CFAP69 (<a href="http://www.genenames.org/cgi-bin/gene\_symbol\_report?hgnc\_id=26107" target="\_blank">HGNC:26107</a>)

**Target/Specificity**

This CFAP69 antibody is generated from rabbits immunized with a KLH conjugated synthetic peptide between 150-178 amino acids from the N-terminal region of human CFAP69.

**Dilution**

WB~~1:1000

IHC-P~~1:10~50

E~~Use at an assay dependent concentration.

**Format**

Purified polyclonal antibody supplied in PBS with 0.09% (W/V) sodium azide. This antibody is purified through a protein A column, followed by peptide affinity purification.

**Storage**

Maintain refrigerated at 2-8°C for up to 2 weeks. For long term storage store at -20°C in small aliquots to prevent freeze-thaw cycles.

**Precautions**

CFAP69 Antibody (N-term) is for research use only and not for use in diagnostic or therapeutic procedures.

**CFAP69 Antibody (N-term) - Protein Information****Name** CFAP69 ([HGNC:26107](#))

**Function** Cilium- and flagellum-associated protein (PubMed:[29606301](#)). In the olfactory epithelium, regulates the speed of activation and termination of the odor response and thus contributes to the robustness of olfactory transduction pathways (By similarity). Required for sperm flagellum assembly and stability (PubMed:[29606301](#)).

#### Cellular Location

Cell projection, cilium {ECO:0000250|UniProtKB:Q8BH53}. Cell projection, cilium, flagellum. Note=Localizes to the midpiece of the sperm flagellum.

#### Tissue Location

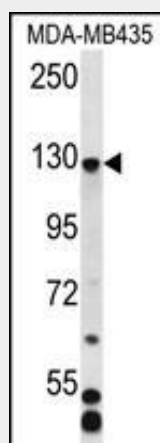
Highly expressed in the testis, specifically in sperm (at protein level) (PubMed:29606301). Expressed in the brain, kidney, liver, lung, and intestine (PubMed:29606301)

### CFAP69 Antibody (N-term) - Protocols

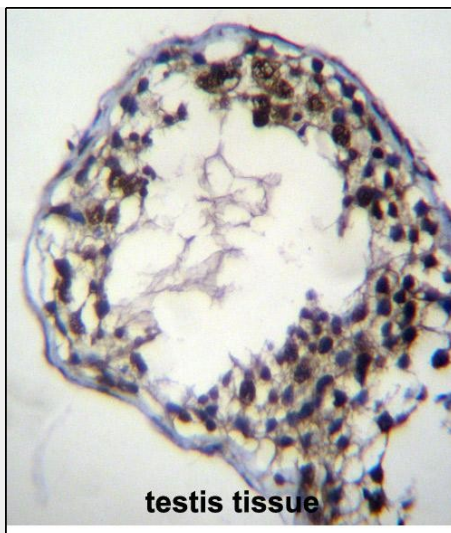
Provided below are standard protocols that you may find useful for product applications.

- [Western Blot](#)
- [Blocking Peptides](#)
- [Dot Blot](#)
- [Immunohistochemistry](#)
- [Immunofluorescence](#)
- [Immunoprecipitation](#)
- [Flow Cytometry](#)
- [Cell Culture](#)

### CFAP69 Antibody (N-term) - Images



CFAP69 Antibody (N-term) (Cat. #AP12429a) western blot analysis in MDA-MB435 cell line lysates (35ug/lane). This demonstrates the CFAP69 antibody detected the CFAP69 protein (arrow).



CFAP69 Antibody (N-term) (Cat. #AP12429a) immunohistochemistry analysis in formalin fixed and paraffin embedded human testis tissue followed by peroxidase conjugation of the secondary antibody and DAB staining. This data demonstrates the use of CFAP69 Antibody (N-term) for immunohistochemistry. Clinical relevance has not been evaluated.