

**OSTC Antibody (C-term)**  
**Affinity Purified Rabbit Polyclonal Antibody (Pab)**  
**Catalog # AP12431b****Specification**

---

**OSTC Antibody (C-term) - Product Information**

Application	WB,E
Primary Accession	<a href="#">Q9NRP0</a>
Other Accession	<a href="#">B0K025</a> , <a href="#">Q78XF5</a> , <a href="#">Q7ZWJ3</a> , <a href="#">Q5ZJR3</a> , <a href="#">Q2KID7</a> , <a href="#">Q5M9B7</a> , <a href="#">NP_067050.1</a>
Reactivity	Mouse
Predicted	Xenopus, Bovine, Chicken, Zebrafish, Rat
Host	Rabbit
Clonality	Polyclonal
Isotype	Rabbit IgG
Calculated MW	16829
Antigen Region	90-117

**OSTC Antibody (C-term) - Additional Information****Gene ID** 58505**Other Names**

Oligosaccharyltransferase complex subunit OSTC, Hydrophobic protein HSF-28, OSTC

**Target/Specificity**

This OSTC antibody is generated from rabbits immunized with a KLH conjugated synthetic peptide between 90-117 amino acids from the C-terminal region of human OSTC.

**Dilution**

WB~~1:1000

E~~Use at an assay dependent concentration.

**Format**

Purified polyclonal antibody supplied in PBS with 0.09% (W/V) sodium azide. This antibody is purified through a protein A column, followed by peptide affinity purification.

**Storage**

Maintain refrigerated at 2-8°C for up to 2 weeks. For long term storage store at -20°C in small aliquots to prevent freeze-thaw cycles.

**Precautions**

OSTC Antibody (C-term) is for research use only and not for use in diagnostic or therapeutic procedures.

**OSTC Antibody (C-term) - Protein Information****Name** OSTC ([HGNC:24448](#))

**Function** Subunit of STT3A-containing oligosaccharyl transferase (OST- A) complex that catalyzes the initial transfer of a defined glycan (Glc(3)Man(9)GlcNAc(2) in eukaryotes) from the lipid carrier dolichol- pyrophosphate to an asparagine residue within an Asn-X-Ser/Thr consensus motif in nascent polypeptide chains, the first step in protein N-glycosylation (PubMed:[28860277](#), PubMed:[31831667](#), PubMed:[39509507](#)). N-glycosylation occurs cotranslationally and the complex associates with the Sec61 complex at the channel-forming translocon complex that mediates protein translocation across the endoplasmic reticulum (ER) (PubMed:[28860277](#), PubMed:[31831667](#), PubMed:[39509507](#)). Within the OST-A complex, acts as an adapter that anchors the OST-A complex to the Sec61 complex (PubMed:[28860277](#)). May be involved in N-glycosylation of APP (amyloid-beta precursor protein) (PubMed:[21768116](#)). Can modulate gamma-secretase cleavage of APP by enhancing endoproteolysis of PSEN1 (PubMed:[21768116](#)).

#### Cellular Location

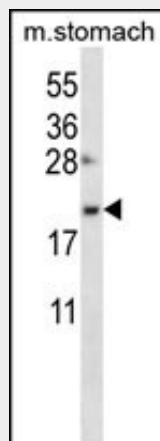
Endoplasmic reticulum. Membrane; Multi-pass membrane protein

#### OSTC Antibody (C-term) - Protocols

Provided below are standard protocols that you may find useful for product applications.

- [Western Blot](#)
- [Blocking Peptides](#)
- [Dot Blot](#)
- [Immunohistochemistry](#)
- [Immunofluorescence](#)
- [Immunoprecipitation](#)
- [Flow Cytometry](#)
- [Cell Culture](#)

#### OSTC Antibody (C-term) - Images



OSTC Antibody (C-term) (Cat. #AP12431b) western blot analysis in mouse stomach tissue lysates (35ug/lane). This demonstrates the OSTC antibody detected the OSTC protein (arrow).

#### OSTC Antibody (C-term) - References

Kalsi, G., et al. Hum. Mol. Genet. 19(12):2497-2506(2010)  
Shibatani, T., et al. Biochemistry 44(16):5982-5992(2005)