

**LRRC67 Antibody (C-term)**  
**Affinity Purified Rabbit Polyclonal Antibody (Pab)**  
**Catalog # AP12456b****Specification**

---

**LRRC67 Antibody (C-term) - Product Information**

Application	WB,E
Primary Accession	<a href="#">O7Z4L9</a>
Other Accession	<a href="#">O4R803</a> , <a href="#">NP_001013648.1</a>
Reactivity	Human
Predicted	Monkey
Host	Rabbit
Clonality	Polyclonal
Isotype	Rabbit IgG
Calculated MW	35480
Antigen Region	238-266

**LRRC67 Antibody (C-term) - Additional Information****Gene ID** 286187**Other Names**

Protein phosphatase 1 regulatory subunit 42, Leucine-rich repeat-containing protein 67, PPP1R42, LRRC67

**Target/Specificity**

This LRRC67 antibody is generated from rabbits immunized with a KLH conjugated synthetic peptide between 238-266 amino acids from the C-terminal region of human LRRC67.

**Dilution**

WB~~1:1000

E~~Use at an assay dependent concentration.

**Format**

Purified polyclonal antibody supplied in PBS with 0.09% (W/V) sodium azide. This antibody is purified through a protein A column, followed by peptide affinity purification.

**Storage**

Maintain refrigerated at 2-8°C for up to 2 weeks. For long term storage store at -20°C in small aliquots to prevent freeze-thaw cycles.

**Precautions**

LRRC67 Antibody (C-term) is for research use only and not for use in diagnostic or therapeutic procedures.

**LRRC67 Antibody (C-term) - Protein Information****Name** PPP1R42 ([HGNC:33732](#))

**Synonyms** LRRC67

**Function** Regulates phosphatase activity of protein phosphatase 1 (PP1) complexes in the testis.

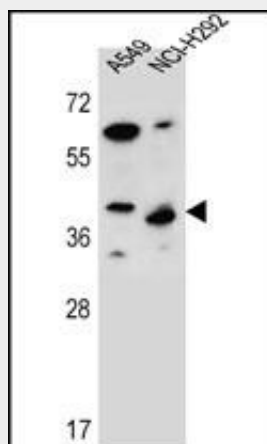
**Cellular Location**

Cytoplasm, cytoskeleton {ECO:0000250|UniProtKB:Q8R1Z4}. Cytoplasm, cytoskeleton, microtubule organizing center, centrosome {ECO:0000250|UniProtKB:Q8R1Z4} Note=Colocalizes with alpha tubulin to the manchette of developing spermatids. Detected to nuclear rim in pachytene spermatocytes Detected at nuclear surface, opposite the acrosome in elongating spermatids. Detected at the microtubule-organizing center (MTOC) Localized to the centrosomal region of late-stage spermatids (By similarity). {ECO:0000250|UniProtKB:Q8R1Z4}

**LRRC67 Antibody (C-term) - Protocols**

Provided below are standard protocols that you may find useful for product applications.

- [Western Blot](#)
- [Blocking Peptides](#)
- [Dot Blot](#)
- [Immunohistochemistry](#)
- [Immunofluorescence](#)
- [Immunoprecipitation](#)
- [Flow Cytometry](#)
- [Cell Culture](#)

**LRRC67 Antibody (C-term) - Images**

LRRC67 Antibody (C-term) (Cat. #AP12456b) western blot analysis in A549,NCI-H292 cell line lysates (35ug/lane).This demonstrates the LRRC67 antibody detected the LRRC67 protein (arrow).

**LRRC67 Antibody (C-term) - References**

Strausberg, R.L., et al. Proc. Natl. Acad. Sci. U.S.A. 99(26):16899-16903(2002)