

**POLR2G Antibody (C-term)**  
**Affinity Purified Rabbit Polyclonal Antibody (Pab)**  
**Catalog # AP12458b**

**Specification**

---

**POLR2G Antibody (C-term) - Product Information**

Application	FC, WB,E
Primary Accession	<a href="#">P62487</a>
Other Accession	<a href="#">P62489</a> , <a href="#">P62488</a> , <a href="#">Q7ZW41</a> , <a href="#">Q5E9B8</a> , <a href="#">NP_002687.1</a>
Reactivity	Human
Predicted	Bovine, Zebrafish, Mouse, Rat
Host	Rabbit
Clonality	Polyclonal
Isotype	Rabbit IgG
Calculated MW	19294
Antigen Region	126-153

**POLR2G Antibody (C-term) - Additional Information**

**Gene ID** 5436

**Other Names**

DNA-directed RNA polymerase II subunit RPB7, RNA polymerase II subunit B7, DNA-directed RNA polymerase II subunit G, RNA polymerase II 19 kDa subunit, RPB19, POLR2G, RPB7

**Target/Specificity**

This POLR2G antibody is generated from rabbits immunized with a KLH conjugated synthetic peptide between 126-153 amino acids from the C-terminal region of human POLR2G.

**Dilution**

FC~~1:10~50

WB~~1:1000

E~~Use at an assay dependent concentration.

**Format**

Purified polyclonal antibody supplied in PBS with 0.09% (W/V) sodium azide. This antibody is purified through a protein A column, followed by peptide affinity purification.

**Storage**

Maintain refrigerated at 2-8°C for up to 2 weeks. For long term storage store at -20°C in small aliquots to prevent freeze-thaw cycles.

**Precautions**

POLR2G Antibody (C-term) is for research use only and not for use in diagnostic or therapeutic procedures.

**POLR2G Antibody (C-term) - Protein Information**

**Name** POLR2G

**Synonyms** RPB7

**Function** Core component of RNA polymerase II (Pol II), a DNA-dependent RNA polymerase which synthesizes mRNA precursors and many functional non-coding RNAs using the four ribonucleoside triphosphates as substrates. Pol II is the central component of the basal RNA polymerase II transcription machinery. It is composed of mobile elements that move relative to each other. POLR2G/RPB7 is part of a subcomplex with POLR2D/RPB4 that binds to a pocket formed by POLR2A/RPB1, POLR2B/RPB2 and POLR2F/RPABC2 at the base of the clamp element. The POLR2D/RPB4- POLR2G/RPB7 subcomplex seems to lock the clamp via POLR2G/RPB7 in the closed conformation thus preventing double-stranded DNA to enter the active site cleft. The POLR2D/RPB4-POLR2G/RPB7 subcomplex binds single- stranded DNA and RNA.

**Cellular Location**

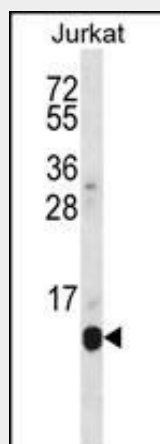
Nucleus.

**POLR2G Antibody (C-term) - Protocols**

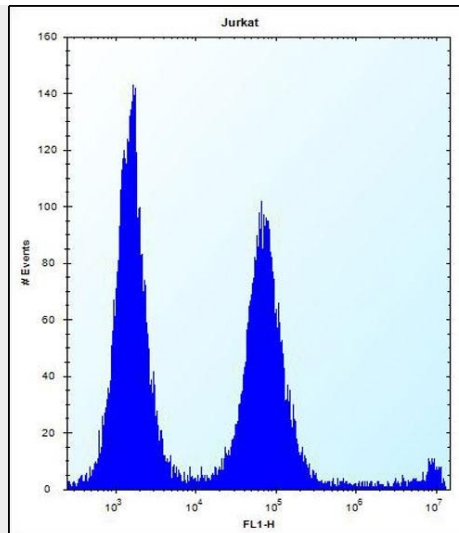
Provided below are standard protocols that you may find useful for product applications.

- [Western Blot](#)
- [Blocking Peptides](#)
- [Dot Blot](#)
- [Immunohistochemistry](#)
- [Immunofluorescence](#)
- [Immunoprecipitation](#)
- [Flow Cytometry](#)
- [Cell Culture](#)

**POLR2G Antibody (C-term) - Images**



POLR2G Antibody (C-term) (Cat. #AP12458b) western blot analysis in Jurkat cell line lysates (35ug/lane). This demonstrates the POLR2G antibody detected the POLR2G protein (arrow).



POLR2G Antibody (C-term) (Cat. #AP12458b) flow cytometric analysis of Jurkat cells (right histogram) compared to a negative control cell (left histogram). FITC-conjugated donkey-anti-rabbit secondary antibodies were used for the analysis.

#### **POLR2G Antibody (C-term) - Background**

This gene encodes the seventh largest subunit of RNA polymerase II, the polymerase responsible for synthesizing messenger RNA in eukaryotes. The protein functions in transcription initiation, and is also thought to help stabilize transcribing polymerase molecules during elongation.

#### **POLR2G Antibody (C-term) - References**

Cojocaru, M., et al. *Biochem. J.* 409(1):139-147(2008)  
Ujvari, A., et al. *Nat. Struct. Mol. Biol.* 13(1):49-54(2006)  
Meka, H., et al. *Nucleic Acids Res.* 33(19):6435-6444(2005)  
Lehner, B., et al. *Genomics* 83(1):153-167(2004)  
Zhou, M., et al. *Proc. Natl. Acad. Sci. U.S.A.* 100(22):12666-12671(2003)