

TSSK6 Antibody (C-term)
Purified Rabbit Polyclonal Antibody (Pab)
Catalog # AP12463b**Specification**

TSSK6 Antibody (C-term) - Product Information

Application	FC, IHC-P, WB,E
Primary Accession	O9BXA6
Other Accession	O925K9 , NP_114426.1
Reactivity	Human
Predicted	Mouse
Host	Rabbit
Clonality	Polyclonal
Isotype	Rabbit IgG
Calculated MW	30331
Antigen Region	198-228

TSSK6 Antibody (C-term) - Additional Information**Gene ID** 83983**Other Names**

Testis-specific serine/threonine-protein kinase 6, TSK-6, TSSK-6, Testis-specific kinase 6, Cancer/testis antigen 72, CT72, Serine/threonine-protein kinase SSTK, Small serine/threonine kinase, TSSK6 {ECO:0000312|EMBL:AAH146111}

Target/Specificity

This TSSK6 antibody is generated from rabbits immunized with a KLH conjugated synthetic peptide between 198-228 amino acids from the C-terminal region of human TSSK6.

Dilution

FC~~1:10~50

IHC-P~~1:10~50

WB~~1:1000

E~~Use at an assay dependent concentration.

Format

Purified polyclonal antibody supplied in PBS with 0.09% (W/V) sodium azide. This antibody is prepared by Saturated Ammonium Sulfate (SAS) precipitation followed by dialysis against PBS.

Storage

Maintain refrigerated at 2-8°C for up to 2 weeks. For long term storage store at -20°C in small aliquots to prevent freeze-thaw cycles.

Precautions

TSSK6 Antibody (C-term) is for research use only and not for use in diagnostic or therapeutic procedures.

TSSK6 Antibody (C-term) - Protein Information

Name TSSK6 {ECO:0000312|EMBL:AAH14611.1}

Function Serine/threonine-protein kinase component of the sperm flagellar doublet microtubules (PubMed:[15870294](#)). May act as a regulator of sperm motility by mediating phosphorylation of sperm doublet microtubule proteins (By similarity). Plays a role in DNA condensation during postmeiotic chromatin remodeling and histone-to-protamine transition during spermatogenesis (By similarity).

Cellular Location

Cytoplasm, cytoskeleton, flagellum axoneme {ECO:0000250|UniProtKB:Q925K9}. Nucleus {ECO:0000250|UniProtKB:Q925K9} Note=Component of the sperm flagellar doublet microtubules. Also localizes in the nucleus of elongating spermatids {ECO:0000250|UniProtKB:Q925K9}

Tissue Location

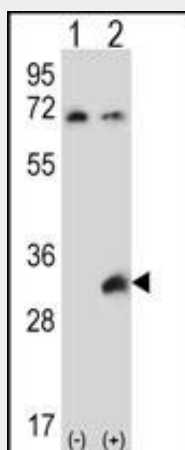
Highly expressed in testis. Expressed at lower levels in colon, small intestine, ovary, prostate, thymus, spleen and peripheral blood leukocytes.

TSSK6 Antibody (C-term) - Protocols

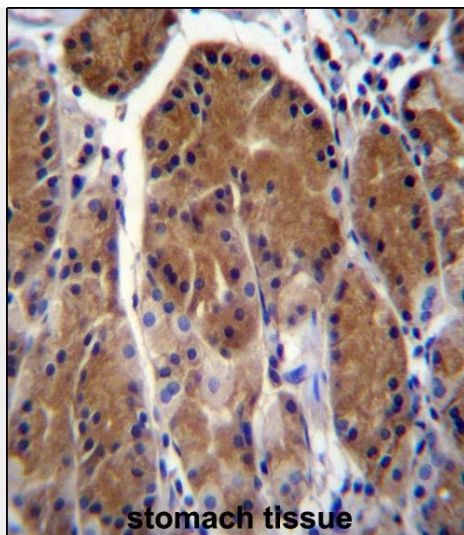
Provided below are standard protocols that you may find useful for product applications.

- [Western Blot](#)
- [Blocking Peptides](#)
- [Dot Blot](#)
- [Immunohistochemistry](#)
- [Immunofluorescence](#)
- [Immunoprecipitation](#)
- [Flow Cytometry](#)
- [Cell Culture](#)

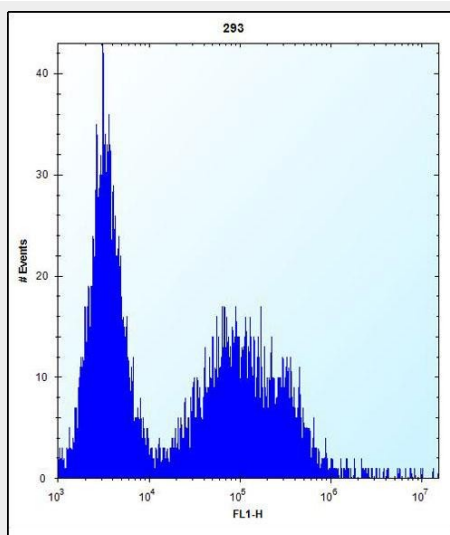
TSSK6 Antibody (C-term) - Images



Western blot analysis of TSSK6 (arrow) using rabbit polyclonal TSSK6 Antibody (C-term) (Cat. #AP12463b). 293 cell lysates (2 ug/lane) either nontransfected (Lane 1) or transiently transfected (Lane 2) with the TSSK6 gene.



TSSK6 Antibody (C-term) (Cat. #AP12463b) immunohistochemistry analysis in formalin fixed and paraffin embedded human stomach tissue followed by peroxidase conjugation of the secondary antibody and DAB staining. This data demonstrates the use of TSSK6 Antibody (C-term) for immunohistochemistry. Clinical relevance has not been evaluated.



TSSK6 Antibody (C-term) (Cat. #AP12463b) flow cytometric analysis of 293 cells (right histogram) compared to a negative control cell (left histogram). FITC-conjugated goat-anti-rabbit secondary antibodies were used for the analysis.

TSSK6 Antibody (C-term) - Background

TSSK6 is a serine/threonine protein kinase that is required for postmeiotic chromatin remodeling and male fertility (Spiridonov et al., 2005 [PubMed 15870294]).

TSSK6 Antibody (C-term) - References

- Su, D., et al. Asian J. Androl. 12(2):234-239(2010)
- Chen, X., et al. Biochem. Biophys. Res. Commun. 333(3):742-749(2005)
- Spiridonov, N.A., et al. Mol. Cell. Biol. 25(10):4250-4261(2005)
- Hao, Z., et al. Mol. Hum. Reprod. 10(6):433-444(2004)