

STXBP3 Antibody (Center)
Affinity Purified Rabbit Polyclonal Antibody (Pab)
Catalog # AP12470c**Specification**

STXBP3 Antibody (Center) - Product Information

Application	WB, IHC-P,E
Primary Accession	O00186
Other Accession	NP_009200.2
Reactivity	Human
Host	Rabbit
Clonality	Polyclonal
Isotype	Rabbit IgG
Calculated MW	67764
Antigen Region	145-171

STXBP3 Antibody (Center) - Additional Information**Gene ID** 6814**Other Names**

Syntaxin-binding protein 3, Platelet Sec1 protein, PSP, Protein unc-18 homolog 3, Unc18-3, Protein unc-18 homolog C, Unc-18C, STXBP3

Target/Specificity

This STXBP3 antibody is generated from rabbits immunized with a KLH conjugated synthetic peptide between 145-171 amino acids from the Central region of human STXBP3.

Dilution

WB~~1:1000

IHC-P~~1:10~50

Format

Purified polyclonal antibody supplied in PBS with 0.09% (W/V) sodium azide. This antibody is purified through a protein A column, followed by peptide affinity purification.

Storage

Maintain refrigerated at 2-8°C for up to 2 weeks. For long term storage store at -20°C in small aliquots to prevent freeze-thaw cycles.

Precautions

STXBP3 Antibody (Center) is for research use only and not for use in diagnostic or therapeutic procedures.

STXBP3 Antibody (Center) - Protein Information**Name** STXBP3

Function Together with STX4 and VAMP2, may play a role in insulin- dependent movement of GLUT4 and in docking/fusion of intracellular GLUT4-containing vesicles with the cell surface in adipocytes.

Cellular Location

Cytoplasm, cytosol. Cell membrane. Note=In platelets, predominantly cytosolic. Low amounts membrane-associated

Tissue Location

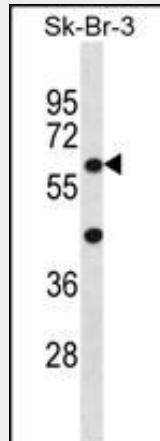
Megakaryocytes and platelets.

STXBP3 Antibody (Center) - Protocols

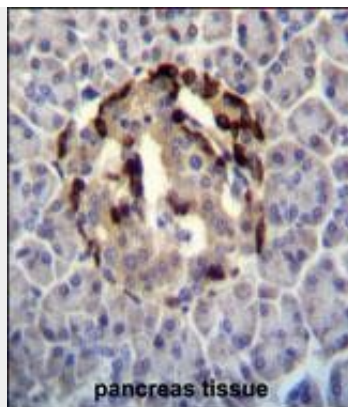
Provided below are standard protocols that you may find useful for product applications.

- [Western Blot](#)
- [Blocking Peptides](#)
- [Dot Blot](#)
- [Immunohistochemistry](#)
- [Immunofluorescence](#)
- [Immunoprecipitation](#)
- [Flow Cytometry](#)
- [Cell Culture](#)

STXBP3 Antibody (Center) - Images



STXBP3 Antibody (Center) (Cat. #AP12470c) western blot analysis in SK-BR-3 cell line lysates (35ug/lane). This demonstrates the STXBP3 antibody detected the STXBP3 protein (arrow).



STXBP3 Antibody (Center) (Cat. #AP12470c) immunohistochemistry analysis in formalin fixed and paraffin embedded human pancreas tissue followed by peroxidase conjugation of the secondary antibody and DAB staining. This data demonstrates the use of STXBP3 Antibody (Center) for immunohistochemistry. Clinical relevance has not been evaluated.

STXBP3 Antibody (Center) - Background

Together with STX4 and VAMP2, STXBP3 may play a role in insulin-dependent movement of GLUT4 and in docking/fusion of intracellular GLUT4-containing vesicles with the cell surface in adipocytes (By similarity).

STXBP3 Antibody (Center) - References

- Bostrom, P., et al. Diabetes 59(8):1870-1878(2010)
- Ban, H.J., et al. BMC Genet. 11, 26 (2010) :
- Brochetta, C., et al. Biochim. Biophys. Acta 1783(10):1781-1791(2008)
- Smithers, N.P., et al. J. Recept. Signal Transduct. Res. 28(6):581-589(2008)
- Fu, J., et al. J. Biol. Chem. 280(5):3178-3184(2005)