

HYAL2 Antibody (Center)
Affinity Purified Rabbit Polyclonal Antibody (Pab)
Catalog # AP12491c**Specification**

HYAL2 Antibody (Center) - Product Information

Application	IHC-P, WB,E
Primary Accession	O12891
Other Accession	NP_003764.3 , NP_149348.2
Reactivity	Human
Host	Rabbit
Clonality	Polyclonal
Isotype	Rabbit IgG
Calculated MW	53860
Antigen Region	128-157

HYAL2 Antibody (Center) - Additional Information**Gene ID** 8692**Other Names**

Hyaluronidase-2, Hyal-2, Hyaluronoglucosaminidase-2, Lung carcinoma protein 2, LuCa-2, HYAL2, LUCA2

Target/Specificity

This HYAL2 antibody is generated from rabbits immunized with a KLH conjugated synthetic peptide between 128-157 amino acids from the Central region of human HYAL2.

Dilution

IHC-P~~1:10~50

WB~~1:1000

E~~Use at an assay dependent concentration.

Format

Purified polyclonal antibody supplied in PBS with 0.09% (W/V) sodium azide. This antibody is purified through a protein A column, followed by peptide affinity purification.

Storage

Maintain refrigerated at 2-8°C for up to 2 weeks. For long term storage store at -20°C in small aliquots to prevent freeze-thaw cycles.

Precautions

HYAL2 Antibody (Center) is for research use only and not for use in diagnostic or therapeutic procedures.

HYAL2 Antibody (Center) - Protein Information**Name** HYAL2

Synonyms LUCA2

Function Catalyzes hyaluronan degradation into small fragments that are endocytosed and degraded in lysosomes by HYAL1 and exoglycosidases (PubMed:[9712871](#)). Essential for the breakdown of extracellular matrix hyaluronan (PubMed:[28081210](#)).

Cellular Location

Cell membrane; Lipid-anchor, GPI-anchor

Tissue Location

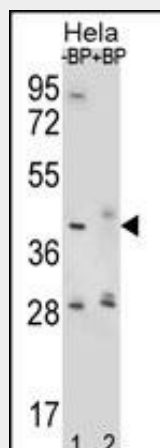
Widely expressed (at protein level).

HYAL2 Antibody (Center) - Protocols

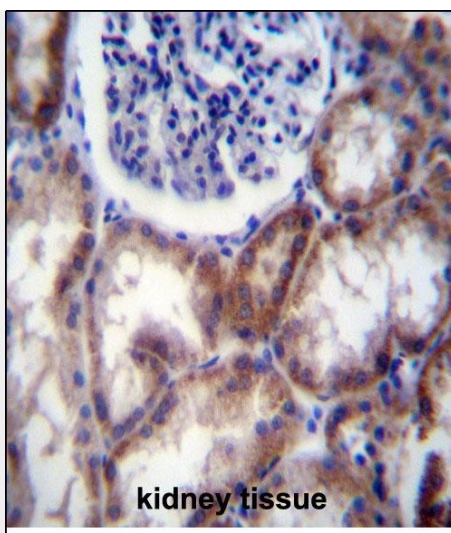
Provided below are standard protocols that you may find useful for product applications.

- [Western Blot](#)
- [Blocking Peptides](#)
- [Dot Blot](#)
- [Immunohistochemistry](#)
- [Immunofluorescence](#)
- [Immunoprecipitation](#)
- [Flow Cytometry](#)
- [Cell Culture](#)

HYAL2 Antibody (Center) - Images



Western blot analysis of HYAL2 Antibody (Center) Pab (Cat. #AP12491c) pre-incubated without (lane 1) and with (lane 2) blocking peptide in HeLa cell line lysate. HYAL2 Antibody (Center) (arrow) was detected using the purified Pab.



HYAL2 Antibody (Center) (Cat. #AP12491c) immunohistochemistry analysis in formalin fixed and paraffin embedded human kidney tissue followed by peroxidase conjugation of the secondary antibody and DAB staining. This data demonstrates the use of HYAL2 Antibody (Center) for immunohistochemistry. Clinical relevance has not been evaluated.

HYAL2 Antibody (Center) - Background

This gene encodes a weak acid-active hyaluronidase. The encoded protein is similar in structure to other more active hyaluronidases. Hyaluronidases degrade hyaluronan, one of the major glycosaminoglycans of the extracellular matrix. Hyaluronan and fragments of hyaluronan are thought to be involved in cell proliferation, migration and differentiation. Although it was previously thought to be a lysosomal hyaluronidase that is active at a pH below 4, the encoded protein is likely a GPI-anchored cell surface protein. This hyaluronidase serves as a receptor for the oncogenic virus Jaagsiekte sheep retrovirus. The gene is one of several related genes in a region of chromosome 3p21.3 associated with tumor suppression. This gene encodes two alternatively spliced transcript variants which differ only in the 5' UTR.

HYAL2 Antibody (Center) - References

Monzon, M.E., et al. J. Biol. Chem. 285(34):26126-26134(2010)
Tzuman, Y.C., et al. Neoplasia 12(1):51-60(2010)
de la Motte, C., et al. Am. J. Pathol. 174(6):2254-2264(2009)
Nykopp, T.K., et al. BMC Cancer 9, 143 (2009) :
Miller, A.D., et al. Osteoarthr. Cartil. 14(12):1315-1317(2006)