

**MAN2A2 Antibody (Center)**  
**Affinity Purified Rabbit Polyclonal Antibody (Pab)**  
**Catalog # AP12501c****Specification**

---

**MAN2A2 Antibody (Center) - Product Information**

Application	WB, IHC-P, FC,E
Primary Accession	<a href="#">P49641</a>
Other Accession	<a href="#">NP_006113.2</a>
Reactivity	Human, Mouse
Host	Rabbit
Clonality	Polyclonal
Isotype	Rabbit IgG
Calculated MW	130539
Antigen Region	767-796

**MAN2A2 Antibody (Center) - Additional Information****Gene ID** 4122**Other Names**

Alpha-mannosidase 2x, Alpha-mannosidase IIx, Man IIx, Mannosidase alpha class 2A member 2, Mannosyl-oligosaccharide 1, 3-1, 6-alpha-mannosidase, MAN2A2, MANA2X

**Target/Specificity**

This MAN2A2 antibody is generated from rabbits immunized with a KLH conjugated synthetic peptide between 767-796 amino acids from the Central region of human MAN2A2.

**Dilution**

WB~~1:1000  
IHC-P~~1:10~50  
FC~~1:10~50

**Format**

Purified polyclonal antibody supplied in PBS with 0.09% (W/V) sodium azide. This antibody is purified through a protein A column, followed by peptide affinity purification.

**Storage**

Maintain refrigerated at 2-8°C for up to 2 weeks. For long term storage store at -20°C in small aliquots to prevent freeze-thaw cycles.

**Precautions**

MAN2A2 Antibody (Center) is for research use only and not for use in diagnostic or therapeutic procedures.

**MAN2A2 Antibody (Center) - Protein Information****Name** MAN2A2

**Synonyms** MANA2X

**Function** Catalyzes the first committed step in the biosynthesis of complex N-glycans. It controls conversion of high mannose to complex N- glycans; the final hydrolytic step in the N-glycan maturation pathway.

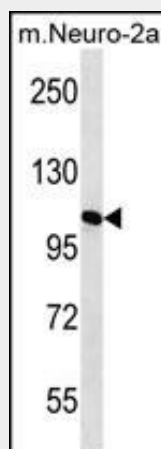
**Cellular Location**

Golgi apparatus membrane; Single- pass type II membrane protein

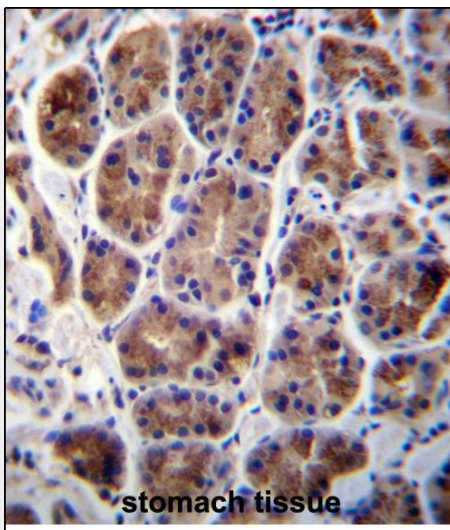
**MAN2A2 Antibody (Center) - Protocols**

Provided below are standard protocols that you may find useful for product applications.

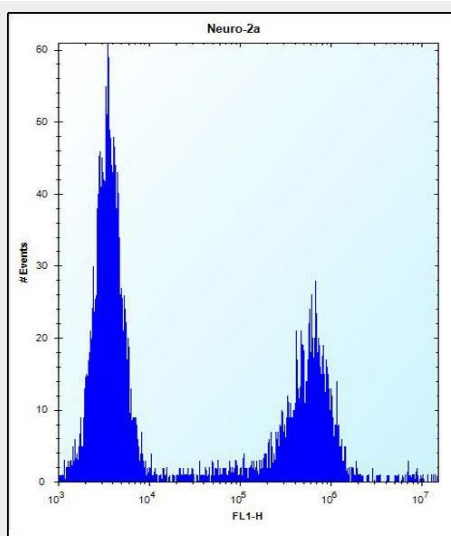
- [Western Blot](#)
- [Blocking Peptides](#)
- [Dot Blot](#)
- [Immunohistochemistry](#)
- [Immunofluorescence](#)
- [Immunoprecipitation](#)
- [Flow Cytometry](#)
- [Cell Culture](#)

**MAN2A2 Antibody (Center) - Images**

MAN2A2 Antibody (Center) (Cat. #AP12501c) western blot analysis in mouse Neuro-2a cell line lysates (35ug/lane). This demonstrates the MAN2A2 antibody detected the MAN2A2 protein (arrow).



MAN2A2 Antibody (Center) (Cat. #AP12501c) immunohistochemistry analysis in formalin fixed and paraffin embedded human stomach tissue followed by peroxidase conjugation of the secondary antibody and DAB staining. This data demonstrates the use of MAN2A2 Antibody (Center) for immunohistochemistry. Clinical relevance has not been evaluated.



MAN2A2 Antibody (Center) (Cat. #AP12501c) flow cytometric analysis of Neuro-2a cells (right histogram) compared to a negative control cell (left histogram). FITC-conjugated donkey-anti-rabbit secondary antibodies were used for the analysis.

### **MAN2A2 Antibody (Center) - Background**

MAN2A2 catalyzes the first committed step in the biosynthesis of complex N-glycans. It controls conversion of high mannose to complex N-glycans; the final hydrolytic step in the N-glycan maturation pathway.

### **MAN2A2 Antibody (Center) - References**

Lesch, K.P., et al. J Neural Transm 115(11):1573-1585(2008)  
Stelzl, U., et al. Cell 122(6):957-968(2005)  
Hillman, R.T., et al. Genome Biol. 5 (2), R8 (2004) :  
Misago, M., et al. Proc. Natl. Acad. Sci. U.S.A. 92(25):11766-11770(1995)