

**NCCRP1 Antibody (C-term)**  
**Affinity Purified Rabbit Polyclonal Antibody (Pab)**  
**Catalog # AP12510B****Specification**

---

**NCCRP1 Antibody (C-term) - Product Information**

Application	WB,E
Primary Accession	<a href="#">Q6ZVX7</a>
Other Accession	<a href="#">G3X9C2</a> , <a href="#">NP_001001414.1</a>
Reactivity	Mouse
Host	Rabbit
Clonality	Polyclonal
Isotype	Rabbit IgG
Calculated MW	30847
Antigen Region	246-275

**NCCRP1 Antibody (C-term) - Additional Information****Gene ID** 342897**Other Names**

F-box only protein 50, NCC receptor protein 1 homolog, NCCRP-1, Non-specific cytotoxic cell receptor protein 1 homolog, NCCRP1, FBXO50

**Target/Specificity**

This NCCRP1 antibody is generated from rabbits immunized with a KLH conjugated synthetic peptide between 246-275 amino acids from the C-terminal region of human NCCRP1.

**Dilution**

WB~~1:1000

E~~Use at an assay dependent concentration.

**Format**

Purified polyclonal antibody supplied in PBS with 0.09% (W/V) sodium azide. This antibody is purified through a protein A column, followed by peptide affinity purification.

**Storage**

Maintain refrigerated at 2-8°C for up to 2 weeks. For long term storage store at -20°C in small aliquots to prevent freeze-thaw cycles.

**Precautions**

NCCRP1 Antibody (C-term) is for research use only and not for use in diagnostic or therapeutic procedures.

**NCCRP1 Antibody (C-term) - Protein Information****Name** NCCRP1

**Synonyms** FBXO50**Function** Promotes cell proliferation.**Cellular Location**

Cytoplasm.

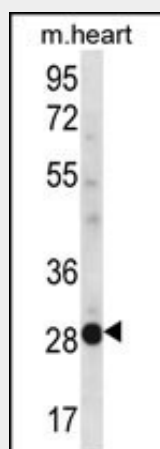
**Tissue Location**

Expressed in the esophagus, oral cavity, skin, tongue and reproductive organs.

**NCCRP1 Antibody (C-term) - Protocols**

Provided below are standard protocols that you may find useful for product applications.

- [Western Blot](#)
- [Blocking Peptides](#)
- [Dot Blot](#)
- [Immunohistochemistry](#)
- [Immunofluorescence](#)
- [Immunoprecipitation](#)
- [Flow Cytometry](#)
- [Cell Culture](#)

**NCCRP1 Antibody (C-term) - Images**

NCCRP1 Antibody (C-term) (Cat. #AP12510b) western blot analysis in mouse heart tissue lysates (35ug/lane). This demonstrates the NCCRP1 antibody detected the NCCRP1 protein (arrow).

**NCCRP1 Antibody (C-term) - Background**

The function of this protein remains unknown.

**NCCRP1 Antibody (C-term) - References**

Strausberg, R.L., et al. Proc. Natl. Acad. Sci. U.S.A. 99(26):16899-16903(2002)