

**FA83D Antibody (C-term)**  
**Affinity Purified Rabbit Polyclonal Antibody (Pab)**  
**Catalog # AP12519b****Specification**

---

**FA83D Antibody (C-term) - Product Information**

Application	WB,E
Primary Accession	<a href="#">O9H4H8</a>
Other Accession	<a href="#">NP_112181.2</a>
Reactivity	Human
Host	Rabbit
Clonality	Polyclonal
Isotype	Rabbit IgG
Calculated MW	64424
Antigen Region	357-385

**FA83D Antibody (C-term) - Additional Information****Gene ID** 81610**Other Names**

Protein FAM83D, Spindle protein CHICA, FAM83D, C20orf129

**Target/Specificity**

This FA83D antibody is generated from rabbits immunized with a KLH conjugated synthetic peptide between 357-385 amino acids from the C-terminal region of human FA83D.

**Dilution**

WB~~1:1000

E~~Use at an assay dependent concentration.

**Format**

Purified polyclonal antibody supplied in PBS with 0.09% (W/V) sodium azide. This antibody is purified through a protein A column, followed by peptide affinity purification.

**Storage**

Maintain refrigerated at 2-8°C for up to 2 weeks. For long term storage store at -20°C in small aliquots to prevent freeze-thaw cycles.

**Precautions**

FA83D Antibody (C-term) is for research use only and not for use in diagnostic or therapeutic procedures.

**FA83D Antibody (C-term) - Protein Information****Name** FAM83D ([HGNC:16122](#))**Function** Through the degradation of FBXW7, may act indirectly on the expression and

downstream signaling of MTOR, JUN and MYC (PubMed:[24344117](#)). May play also a role in cell proliferation through activation of the ERK1/ERK2 signaling cascade (PubMed:[25646692](#)). May also be important for proper chromosome congression and alignment during mitosis through its interaction with KIF22 (PubMed:[18485706](#)).

#### Cellular Location

Cytoplasm. Cytoplasm, cytoskeleton, spindle. Cytoplasm, cytoskeleton, spindle pole  
Note=Primarily cytoplasmic during interphase, but at prophase, associates with spindle microtubules, with a clear concentration toward the spindle poles. It persists on spindle microtubules through metaphase and anaphase.

#### Tissue Location

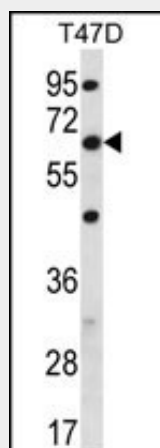
Expressed in the testis.

### FA83D Antibody (C-term) - Protocols

Provided below are standard protocols that you may find useful for product applications.

- [Western Blot](#)
- [Blocking Peptides](#)
- [Dot Blot](#)
- [Immunohistochemistry](#)
- [Immunofluorescence](#)
- [Immunoprecipitation](#)
- [Flow Cytometry](#)
- [Cell Culture](#)

### FA83D Antibody (C-term) - Images



FAM83D Antibody (C-term) (Cat. #AP12519b) western blot analysis in T47D cell line lysates (35ug/lane). This demonstrates the FAM83D antibody detected the FAM83D protein (arrow).

### FA83D Antibody (C-term) - Background

FA83D is required for proper chromosome congression and alignment during mitosis. Required for targeting KIF22/KID to the spindle microtubules.

### FA83D Antibody (C-term) - References

Santamaria, A., et al. Curr. Biol. 18(10):723-729(2008) Nousiainen, M., et al. Proc. Natl. Acad. Sci.

U.S.A. 103(14):5391-5396(2006) Deloukas, P., et al. Nature 414(6866):865-871(2001)