

**SH3D20 Antibody (Center)**  
**Affinity Purified Rabbit Polyclonal Antibody (Pab)**  
**Catalog # AP12523c****Specification**

---

**SH3D20 Antibody (Center) - Product Information**

Application	WB,E
Primary Accession	<a href="#">O6ZUM4</a>
Other Accession	<a href="#">NP_001152802.1</a>
Reactivity	Human
Host	Rabbit
Clonality	Polyclonal
Isotype	Rabbit IgG
Calculated MW	98396
Antigen Region	198-226

**SH3D20 Antibody (Center) - Additional Information****Gene ID** 201176**Other Names**

Rho GTPase-activating protein 27, CIN85-associated multi-domain-containing Rho GTPase-activating protein 1, Rho-type GTPase-activating protein 27, SH3 domain-containing protein 20, ARHGAP27, CAMGAP1, SH3D20

**Target/Specificity**

This SH3D20 antibody is generated from rabbits immunized with a KLH conjugated synthetic peptide between 198-226 amino acids from the Central region of human SH3D20.

**Dilution**

WB~~1:2000

E~~Use at an assay dependent concentration.

**Format**

Purified polyclonal antibody supplied in PBS with 0.09% (W/V) sodium azide. This antibody is purified through a protein A column, followed by peptide affinity purification.

**Storage**

Maintain refrigerated at 2-8°C for up to 2 weeks. For long term storage store at -20°C in small aliquots to prevent freeze-thaw cycles.

**Precautions**

SH3D20 Antibody (Center) is for research use only and not for use in diagnostic or therapeutic procedures.

**SH3D20 Antibody (Center) - Protein Information****Name** ARHGAP27 ([HGNC:31813](#))

**Function** Rho GTPase-activating protein which may be involved in clathrin-mediated endocytosis. GTPase activators for the Rho-type GTPases act by converting them to an inactive GDP-bound state. Has activity toward CDC42 and RAC1 (By similarity).

**Cellular Location**

Cytoplasm. Membrane; Peripheral membrane protein

**Tissue Location**

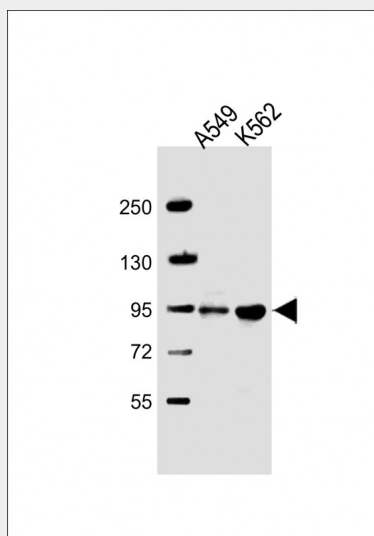
Expressed in germinal center B-cell, spleen, chronic lymphocytic leukemia, pancreatic cancer and lung cancer

### SH3D20 Antibody (Center) - Protocols

Provided below are standard protocols that you may find useful for product applications.

- [Western Blot](#)
- [Blocking Peptides](#)
- [Dot Blot](#)
- [Immunohistochemistry](#)
- [Immunofluorescence](#)
- [Immunoprecipitation](#)
- [Flow Cytometry](#)
- [Cell Culture](#)

### SH3D20 Antibody (Center) - Images



All lanes : Anti-SH3D20 Antibody (Center) at 1:2000 dilution Lane 1: A549 whole cell lysate Lane 2: K562 whole cell lysate Lysates/proteins at 20 µg per lane. Secondary Goat Anti-Rabbit IgG, (H+L), Peroxidase conjugated at 1/10000 dilution. Predicted band size : 98 kDa Blocking/Dilution buffer: 5% NFDM/TBST.

### SH3D20 Antibody (Center) - Background

SH3D20 is a rho GTPase-activating protein which may be involved in clathrin-mediated endocytosis. GTPase activators for the Rho-type GTPases act by converting them to an inactive GDP-bound state. Has activity toward CDC42 and RAC1 (By similarity).

### **SH3D20 Antibody (Center) - References**

Edwards, T.L., et al. Ann. Hum. Genet. 74(2):97-109(2010)