

WDR3 Antibody (N-term)
Affinity Purified Rabbit Polyclonal Antibody (Pab)
Catalog # AP12525a**Specification**

WDR3 Antibody (N-term) - Product Information

Application	WB, FC,E
Primary Accession	O9UNX4
Other Accession	NP_006775.1
Reactivity	Human
Host	Rabbit
Clonality	Polyclonal
Isotype	Rabbit IgG
Calculated MW	106099
Antigen Region	208-236

WDR3 Antibody (N-term) - Additional Information**Gene ID** 10885**Other Names**

WD repeat-containing protein 3, WDR3

Target/Specificity

This WDR3 antibody is generated from rabbits immunized with a KLH conjugated synthetic peptide between 208-236 amino acids from the N-terminal region of human WDR3.

Dilution

WB~~1:1000

FC~~1:10~50

Format

Purified polyclonal antibody supplied in PBS with 0.09% (W/V) sodium azide. This antibody is purified through a protein A column, followed by peptide affinity purification.

Storage

Maintain refrigerated at 2-8°C for up to 2 weeks. For long term storage store at -20°C in small aliquots to prevent freeze-thaw cycles.

Precautions

WDR3 Antibody (N-term) is for research use only and not for use in diagnostic or therapeutic procedures.

WDR3 Antibody (N-term) - Protein Information**Name** WDR3 ([HGNC:12755](#))**Function** Part of the small subunit (SSU) processome, first precursor of the small eukaryotic

ribosomal subunit. During the assembly of the SSU processome in the nucleolus, many ribosome biogenesis factors, an RNA chaperone and ribosomal proteins associate with the nascent pre- rRNA and work in concert to generate RNA folding, modifications, rearrangements and cleavage as well as targeted degradation of pre- ribosomal RNA by the RNA exosome.

Cellular Location

Nucleus, nucleolus

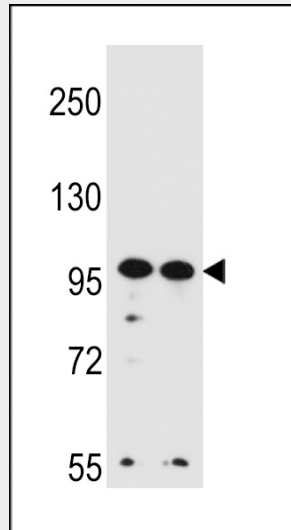
Tissue Location

Ubiquitous.

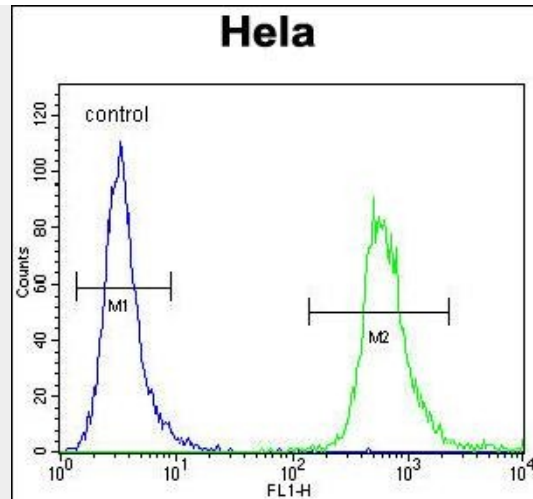
WDR3 Antibody (N-term) - Protocols

Provided below are standard protocols that you may find useful for product applications.

- [Western Blot](#)
- [Blocking Peptides](#)
- [Dot Blot](#)
- [Immunohistochemistry](#)
- [Immunofluorescence](#)
- [Immunoprecipitation](#)
- [Flow Cytometry](#)
- [Cell Culture](#)

WDR3 Antibody (N-term) - Images

WDR3 Antibody (N-term) (Cat. #AP12525a) western blot analysis in HeLa, K562 cell line lysates (35ug/lane). This demonstrates the WDR3 antibody detected the WDR3 protein (arrow).



WDR3 Antibody (N-term) (Cat. #AP12525a) flow cytometric analysis of Hela cells (right histogram) compared to a negative control cell (left histogram). FITC-conjugated goat-anti-rabbit secondary antibodies were used for the analysis.

WDR3 Antibody (N-term) - Background

This gene encodes a nuclear protein containing 10 WD repeats. WD repeats are approximately 30- to 40-amino acid domains containing several conserved residues, which usually include a trp-asp at the C-terminal end. Proteins belonging to the WD repeat family are involved in a variety of cellular processes, including cell cycle progression, signal transduction, apoptosis, and gene regulation.

WDR3 Antibody (N-term) - References

- Akdi, A., et al. Thyroid 20(7):803-809(2010)
- McMahon, M., et al. J. Biol. Chem. 285(24):18309-18318(2010)
- Olsen, J.V., et al. Cell 127(3):635-648(2006)
- Nousiainen, M., et al. Proc. Natl. Acad. Sci. U.S.A. 103(14):5391-5396(2006)
- Nousiainen, M., et al. Proc. Natl. Acad. Sci. U.S.A. 103(14):5391-5396(2006)