

**LIPM Antibody (C-term)**  
**Affinity Purified Rabbit Polyclonal Antibody (Pab)**  
**Catalog # AP12530b****Specification**

---

**LIPM Antibody (C-term) - Product Information**

Application	WB, IHC-P,E
Primary Accession	<a href="#">Q5VYY2</a>
Other Accession	<a href="#">NP_001121687.1</a>
Reactivity	Human
Host	Rabbit
Clonality	Polyclonal
Isotype	Rabbit IgG
Calculated MW	48233
Antigen Region	318-346

**LIPM Antibody (C-term) - Additional Information****Gene ID** 340654**Other Names**

Lipase member M, 311-, Lipase-like abhydrolase domain-containing protein 3, LIPM, LIPL3

**Target/Specificity**

This LIPM antibody is generated from rabbits immunized with a KLH conjugated synthetic peptide between 318-346 amino acids from the C-terminal region of human LIPM.

**Dilution**

WB~~1:1000

IHC-P~~1:10~50

**Format**

Purified polyclonal antibody supplied in PBS with 0.09% (W/V) sodium azide. This antibody is purified through a protein A column, followed by peptide affinity purification.

**Storage**

Maintain refrigerated at 2-8°C for up to 2 weeks. For long term storage store at -20°C in small aliquots to prevent freeze-thaw cycles.

**Precautions**

LIPM Antibody (C-term) is for research use only and not for use in diagnostic or therapeutic procedures.

**LIPM Antibody (C-term) - Protein Information****Name** LIPM**Synonyms** LIPL3

**Function** Plays a highly specific role in the last step of keratinocyte differentiation. May have an essential function in lipid metabolism of the most differentiated epidermal layers.

**Cellular Location**

Secreted.

**Tissue Location**

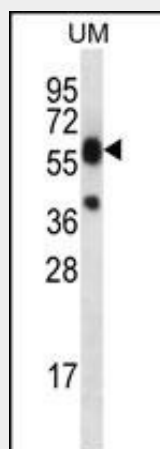
Exclusively expressed in the epidermis within the granular keratinocytes.

**LIPM Antibody (C-term) - Protocols**

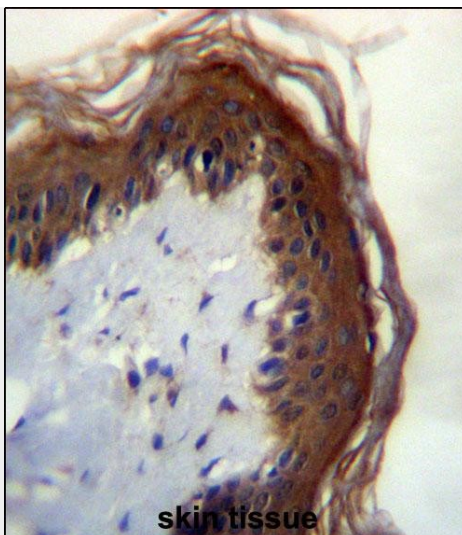
Provided below are standard protocols that you may find useful for product applications.

- [Western Blot](#)
- [Blocking Peptides](#)
- [Dot Blot](#)
- [Immunohistochemistry](#)
- [Immunofluorescence](#)
- [Immunoprecipitation](#)
- [Flow Cytometry](#)
- [Cell Culture](#)

**LIPM Antibody (C-term) - Images**



LIPM Antibody (C-term) (Cat. #AP12530b) western blot analysis in uterus tumor cell line lysates (35ug/lane). This demonstrates the LIPM antibody detected the LIPM protein (arrow).



LIPM Antibdy (C-term) (Cat. #AP12530b) immunohistochemistry analysis in formalin fixed and paraffin embedded human skin tissue followed by peroxidase conjugation of the secondary antibody and DAB staining. This data demonstrates the use of LIPM Antibdy (C-term) for immunohistochemistry. Clinical relevance has not been evaluated.

#### **LIPM Antibody (C-term) - Background**

LIPM plays a highly specific role in the last step of keratinocyte differentiation. May have an essential function in lipid metabolism of the most differentiated epidermal layers.

#### **LIPM Antibody (C-term) - References**

Toulza, E., et al. Genome Biol. 8 (6), R107 (2007) :