

K1324 Antibody (C-term)
Affinity Purified Rabbit Polyclonal Antibody (Pab)
Catalog # AP12550b

Specification

K1324 Antibody (C-term) - Product Information

Application	IHC-P, WB,E
Primary Accession	O6UXG2
Other Accession	NP_065826.2
Reactivity	Human, Mouse
Host	Rabbit
Clonality	Polyclonal
Isotype	Rabbit IgG
Calculated MW	111382
Antigen Region	704-732

K1324 Antibody (C-term) - Additional Information

Gene ID 57535

Other Names

UPF0577 protein KIAA1324, Estrogen-induced gene 121 protein, KIAA1324, EIG121

Target/Specificity

This K1324 antibody is generated from rabbits immunized with a KLH conjugated synthetic peptide between 704-732 amino acids from the C-terminal region of human K1324.

Dilution

IHC-P~~1:10~50

WB~~1:1000

E~~Use at an assay dependent concentration.

Format

Purified polyclonal antibody supplied in PBS with 0.09% (W/V) sodium azide. This antibody is purified through a protein A column, followed by peptide affinity purification.

Storage

Maintain refrigerated at 2-8°C for up to 2 weeks. For long term storage store at -20°C in small aliquots to prevent freeze-thaw cycles.

Precautions

K1324 Antibody (C-term) is for research use only and not for use in diagnostic or therapeutic procedures.

K1324 Antibody (C-term) - Protein Information

Name ELAPOR1 ([HGNC:29618](#))

Function May protect cells from cell death by inducing cytosolic vacuolization and up-regulating the autophagy pathway (PubMed:[21072319](#)). May play a role in apoptosis and cell proliferation through its interaction with HSPA5 (PubMed:[26045166](#)).

Cellular Location

Cell membrane; Single-pass type I membrane protein. Late endosome membrane; Single-pass type I membrane protein. Golgi apparatus, trans-Golgi network membrane; Single-pass type I membrane protein. Lysosome membrane; Single-pass membrane protein. Endoplasmic reticulum membrane; Single-pass type I membrane protein

Tissue Location

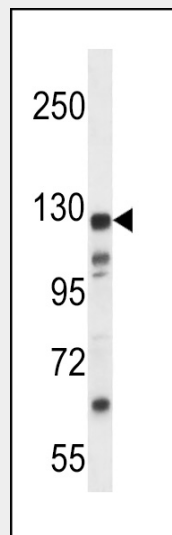
Expressed in normal endometrium but overexpressed in endometrioid tumors.

K1324 Antibody (C-term) - Protocols

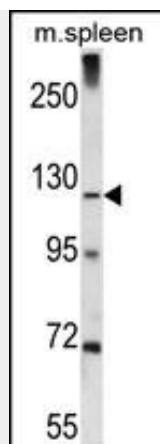
Provided below are standard protocols that you may find useful for product applications.

- [Western Blot](#)
- [Blocking Peptides](#)
- [Dot Blot](#)
- [Immunohistochemistry](#)
- [Immunofluorescence](#)
- [Immunoprecipitation](#)
- [Flow Cytometry](#)
- [Cell Culture](#)

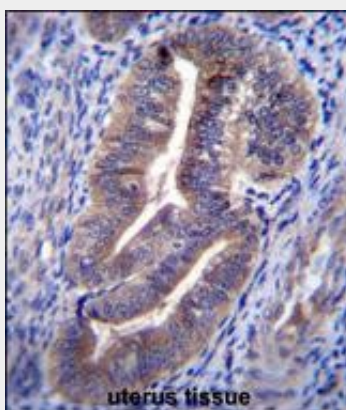
K1324 Antibody (C-term) - Images



K1324 Antibody (C-term) (Cat. #AP12550b) western blot analysis in MDA-MB435 cell line lysates (35ug/lane). This demonstrates the K1324 antibody detected the K1324 protein (arrow).



K1324 Antibody (C-term) (Cat. #AP12550b) western blot analysis in mouse spleen tissue lysates (35ug/lane). This demonstrates the K1324 antibody detected the K1324 protein (arrow).



K1324 Antibody (C-term) (Cat. #AP12550b) immunohistochemistry analysis in formalin fixed and paraffin embedded human uterus tissue followed by peroxidase conjugation of the secondary antibody and DAB staining. This data demonstrates the use of K1324 Antibody (C-term) for immunohistochemistry. Clinical relevance has not been evaluated.

K1324 Antibody (C-term) - Background

K1324 may play a role as a marker of hyperestrogenic state and estrogen-related type I endometrial carcinoma.

K1324 Antibody (C-term) - References

- Rose, J.E., et al. Mol. Med. 16 (7-8), 247-253 (2010) :
- Araki, T., et al. Gene Expr. Patterns 7(6):666-671(2007)
- Wang, A.G., et al. Biochem. Biophys. Res. Commun. 345(3):1022-1032(2006)
- Deng, L., et al. Clin. Cancer Res. 11(23):8258-8264(2005)
- Clark, H.F., et al. Genome Res. 13(10):2265-2270(2003)