

ERRFI1 Antibody (Center)
Affinity Purified Rabbit Polyclonal Antibody (Pab)
Catalog # AP12558c**Specification**

ERRFI1 Antibody (Center) - Product Information

Application	WB,E
Primary Accession	O9UJM3
Other Accession	NP_061821.1
Reactivity	Human
Host	Rabbit
Clonality	Polyclonal
Isotype	Rabbit IgG
Calculated MW	50560
Antigen Region	257-286

ERRFI1 Antibody (Center) - Additional Information**Gene ID** 54206**Other Names**

ERBB receptor feedback inhibitor 1, Mitogen-inducible gene 6 protein, MIG-6, ERRFI1, MIG6

Target/Specificity

This ERRFI1 antibody is generated from rabbits immunized with a KLH conjugated synthetic peptide between 257-286 amino acids from the Central region of human ERRFI1.

Dilution

WB~~1:1000

E~~Use at an assay dependent concentration.

Format

Purified polyclonal antibody supplied in PBS with 0.09% (W/V) sodium azide. This antibody is purified through a protein A column, followed by peptide affinity purification.

Storage

Maintain refrigerated at 2-8°C for up to 2 weeks. For long term storage store at -20°C in small aliquots to prevent freeze-thaw cycles.

Precautions

ERRFI1 Antibody (Center) is for research use only and not for use in diagnostic or therapeutic procedures.

ERRFI1 Antibody (Center) - Protein Information**Name** ERRFI1**Synonyms** MIG6

Function Negative regulator of EGFR signaling in skin morphogenesis. Acts as a negative regulator for several EGFR family members, including ERBB2, ERBB3 and ERBB4. Inhibits EGFR catalytic activity by interfering with its dimerization. Inhibits autophosphorylation of EGFR, ERBB2 and ERBB4. Important for normal keratinocyte proliferation and differentiation. Plays a role in modulating the response to steroid hormones in the uterus. Required for normal response to progesterone in the uterus and for fertility. Mediates epithelial estrogen responses in the uterus by regulating ESR1 levels and activation. Important for regulation of endometrium cell proliferation. Important for normal prenatal and perinatal lung development (By similarity).

Cellular Location

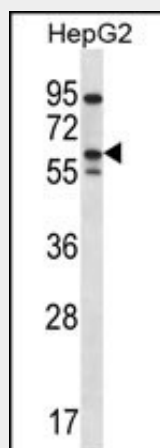
Cytoplasm. Cell membrane; Peripheral membrane protein; Cytoplasmic side. Nucleus.
Note=Associated with the plasma membrane of basal skin keratinocytes. Translocates into the nucleus of differentiating suprabasal keratinocytes (By similarity).

ERRFI1 Antibody (Center) - Protocols

Provided below are standard protocols that you may find useful for product applications.

- [Western Blot](#)
- [Blocking Peptides](#)
- [Dot Blot](#)
- [Immunohistochemistry](#)
- [Immunofluorescence](#)
- [Immunoprecipitation](#)
- [Flow Cytometry](#)
- [Cell Culture](#)

ERRFI1 Antibody (Center) - Images



ERRFI1 Antibody (Center) (Cat. #AP12558c) western blot analysis in HepG2 cell line lysates (35ug/lane). This demonstrates the ERRFI1 antibody detected the ERRFI1 protein (arrow).

ERRFI1 Antibody (Center) - Background

ERRFI1 is a cytoplasmic protein whose expression is upregulated with cell growth (Wick et al., 1995 [PubMed 7641805]). It shares significant homology with the protein product of rat gene-33, which is induced during cell stress and mediates cell signaling (Makkinje et al., 2000 [PubMed 10749885]; Fiorentino et al., 2000 [PubMed 11003669]).

ERRFI1 Antibody (Center) - References

Frosi, Y., et al. J. Cell Biol. 189(3):557-571(2010)
Ying, H., et al. Proc. Natl. Acad. Sci. U.S.A. 107(15):6912-6917(2010)
Dubois, P.C., et al. Nat. Genet. 42(4):295-302(2010)
Reschke, M., et al. Hepatology 51(4):1383-1390(2010)
Nagashima, T., et al. FEBS J. 276(18):5239-5251(2009)