

APEH Antibody (N-term)
Purified Rabbit Polyclonal Antibody (Pab)
Catalog # AP1255a**Specification**

APEH Antibody (N-term) - Product Information

Application	WB,E
Primary Accession	P13798
Reactivity	Human
Host	Rabbit
Clonality	Polyclonal
Isotype	Rabbit IgG
Calculated MW	81225
Antigen Region	174-204

APEH Antibody (N-term) - Additional Information**Gene ID** 327**Other Names**

Acylamino-acid-releasing enzyme, AARE, Acyl-peptide hydrolase, APH, Acylaminoacyl-peptidase, Oxidized protein hydrolase, OPH, APEH, D3F15S2, D3S48E, DNF15S2

Target/Specificity

This APEH antibody is generated from rabbits immunized with a KLH conjugated synthetic peptide between 174-204 amino acids from the N-terminal region of human APEH.

Dilution

WB~~1:1000

E~~Use at an assay dependent concentration.

Format

Purified polyclonal antibody supplied in PBS with 0.09% (W/V) sodium azide. This antibody is prepared by Saturated Ammonium Sulfate (SAS) precipitation followed by dialysis against PBS.

Storage

Maintain refrigerated at 2-8°C for up to 2 weeks. For long term storage store at -20°C in small aliquots to prevent freeze-thaw cycles.

Precautions

APEH Antibody (N-term) is for research use only and not for use in diagnostic or therapeutic procedures.

APEH Antibody (N-term) - Protein Information**Name** APEH**Synonyms** D3F15S2, D3S48E, DNF15S2

Function This enzyme catalyzes the hydrolysis of the N-terminal peptide bond of an N-acetylated peptide to generate an N-acetylated amino acid and a peptide with a free N-terminus (PubMed:[10719179](#), PubMed:[1740429](#), PubMed:[2006156](#)). It preferentially cleaves off Ac-Ala, Ac-Met and Ac-Ser (By similarity). Also, involved in the degradation of oxidized and glycated proteins (PubMed:[10719179](#)).

Cellular Location

Cytoplasm.

Tissue Location

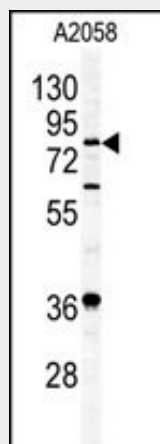
Expressed in erythrocytes (at protein level).

APEH Antibody (N-term) - Protocols

Provided below are standard protocols that you may find useful for product applications.

- [Western Blot](#)
- [Blocking Peptides](#)
- [Dot Blot](#)
- [Immunohistochemistry](#)
- [Immunofluorescence](#)
- [Immunoprecipitation](#)
- [Flow Cytometry](#)
- [Cell Culture](#)

APEH Antibody (N-term) - Images



Western blot analysis of APEH antibody (N-term)(Cat.#AP1255a) in A2058 cell line lysates (35ug/lane). APEH (arrow) was detected using the purified Pab.

APEH Antibody (N-term) - Background

APEH is the enzyme acylpeptide hydrolase, which catalyzes the hydrolysis of the terminal acetylated amino acid preferentially from small acetylated peptides. The acetyl amino acid formed by this hydrolase is further processed to acetate and a free amino acid by an aminoacylase. APEH gene is located within the same region of chromosome 3 (3p21) as the aminoacylase gene, and deletions at this locus are also associated with a decrease in aminoacylase activity. The acylpeptide hydrolase is a homotetrameric protein of 300 kDa with each subunit consisting of 732 amino acid residues. The protein can play an important role in destroying oxidatively damaged proteins in living cells.

APEH Antibody (N-term) - References

Perrier,J., Giardina,T. Biol. Cell 94 (1), 45-54 (2002)
Erlandsson,R., Boldog,F. Oncogene 6 (7), 1293-1295 (1991)
Erlandsson,R., Bergerheim,U.S. Oncogene 5 (8), 1207-1211 (1990)