

S3TC1 Antibody (C-term)
Affinity Purified Rabbit Polyclonal Antibody (Pab)
Catalog # AP12582c**Specification**

S3TC1 Antibody (C-term) - Product Information

Application	WB, IHC-P, FC,E
Primary Accession	Q8TE82
Other Accession	NP_061859.3
Reactivity	Human
Host	Rabbit
Clonality	Polyclonal
Isotype	Rabbit IgG
Calculated MW	146961
Antigen Region	1026-1055

S3TC1 Antibody (C-term) - Additional Information**Gene ID** 54436**Other Names**

SH3 domain and tetratricopeptide repeat-containing protein 1, SH3TC1

Target/Specificity

This S3TC1 antibody is generated from rabbits immunized with a KLH conjugated synthetic peptide between 1026-1055 amino acids from the C-terminal region of human S3TC1.

Dilution

WB~~1:1000
IHC-P~~1:10~50
FC~~1:10~50

Format

Purified polyclonal antibody supplied in PBS with 0.09% (W/V) sodium azide. This antibody is purified through a protein A column, followed by peptide affinity purification.

Storage

Maintain refrigerated at 2-8°C for up to 2 weeks. For long term storage store at -20°C in small aliquots to prevent freeze-thaw cycles.

Precautions

S3TC1 Antibody (C-term) is for research use only and not for use in diagnostic or therapeutic procedures.

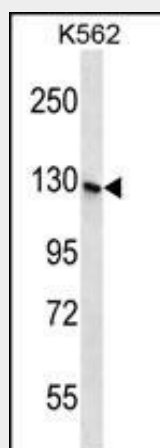
S3TC1 Antibody (C-term) - Protein Information**Name** SH3TC1

S3TC1 Antibody (C-term) - Protocols

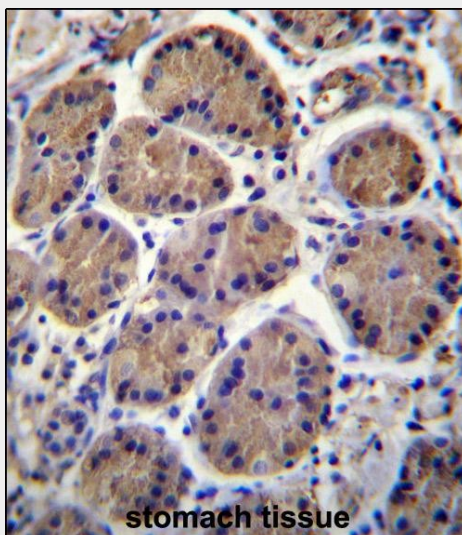
Provided below are standard protocols that you may find useful for product applications.

- [Western Blot](#)
- [Blocking Peptides](#)
- [Dot Blot](#)
- [Immunohistochemistry](#)
- [Immunofluorescence](#)
- [Immunoprecipitation](#)
- [Flow Cytometry](#)
- [Cell Culture](#)

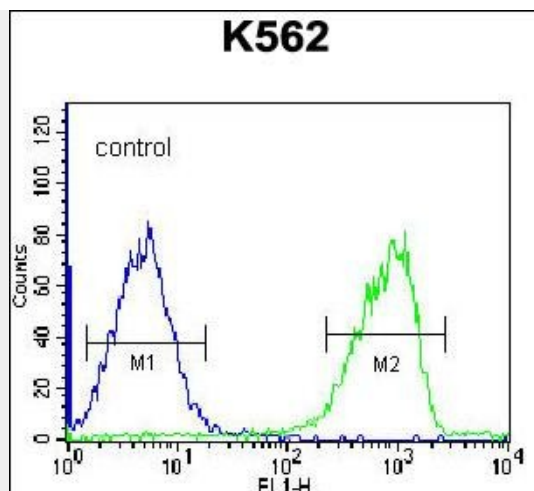
S3TC1 Antibody (C-term) - Images



S3TC1 Antibody (C-term) (Cat. #AP12582c) western blot analysis in K562 cell line lysates (35ug/lane). This demonstrates the S3TC1 antibody detected the S3TC1 protein (arrow).



S3TC1 Antibody (C-term) (Cat. #AP12582c) immunohistochemistry analysis in formalin fixed and paraffin embedded human stomach tissue followed by peroxidase conjugation of the secondary antibody and DAB staining. This data demonstrates the use of S3TC1 Antibody (C-term) for immunohistochemistry. Clinical relevance has not been evaluated.



S3TC1 Antibody (C-term) (Cat. #AP12582c) flow cytometric analysis of K562 cells (right histogram) compared to a negative control cell (left histogram). FITC-conjugated goat-anti-rabbit secondary antibodies were used for the analysis.

S3TC1 Antibody (C-term) - Background

The exact functions of this protein remain unknown.

S3TC1 Antibody (C-term) - References

Rose, J. Phd, et al. Mol. Med. (2010) In press :
Trynka, G., et al. Gut 58(8):1078-1083(2009)