

SENp8 Antibody (N-term)
Purified Rabbit Polyclonal Antibody (Pab)
Catalog # AP1259a**Specification**

SENp8 Antibody (N-term) - Product Information

Application	WB,E
Primary Accession	O96LD8
Other Accession	O9D2Z4
Reactivity	Human, Mouse
Host	Rabbit
Clonality	Polyclonal
Isotype	Rabbit IgG
Calculated MW	24107
Antigen Region	4-35

SENp8 Antibody (N-term) - Additional Information**Gene ID** 123228**Other Names**

Sentrin-specific protease 8, Deneddylase-1, NEDD8-specific protease 1, Protease, cysteine 2, Sentrin/SUMO-specific protease SENp8, SENp8, DEN1, NEDP1, PRSC2

Target/Specificity

This SENp8 antibody is generated from rabbits immunized with a KLH conjugated synthetic peptide between 4-35 amino acids from the N-terminal region of human SENp8.

Dilution

WB~~1:1000

E~~Use at an assay dependent concentration.

Format

Purified polyclonal antibody supplied in PBS with 0.09% (W/V) sodium azide. This antibody is prepared by Saturated Ammonium Sulfate (SAS) precipitation followed by dialysis against PBS.

Storage

Maintain refrigerated at 2-8°C for up to 2 weeks. For long term storage store at -20°C in small aliquots to prevent freeze-thaw cycles.

Precautions

SENp8 Antibody (N-term) is for research use only and not for use in diagnostic or therapeutic procedures.

SENp8 Antibody (N-term) - Protein Information**Name** SENp8

Synonyms DEN1, NEDP1, PRSC2

Function Protease that catalyzes two essential functions in the NEDD8 pathway: processing of full-length NEDD8 to its mature form and deconjugation of NEDD8 from targeted proteins such as cullins or p53.

Tissue Location

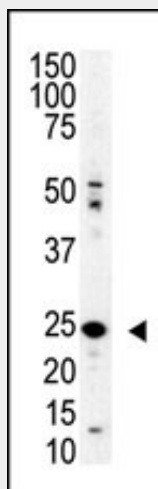
Broadly expressed, with highest levels in kidney and pancreas.

SENp8 Antibody (N-term) - Protocols

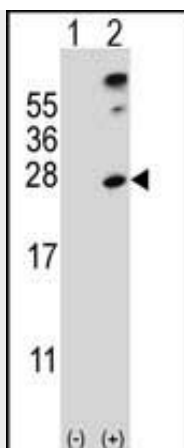
Provided below are standard protocols that you may find useful for product applications.

- [Western Blot](#)
- [Blocking Peptides](#)
- [Dot Blot](#)
- [Immunohistochemistry](#)
- [Immunofluorescence](#)
- [Immunoprecipitation](#)
- [Flow Cytometry](#)
- [Cell Culture](#)

SENp8 Antibody (N-term) - Images



Western blot analysis of SENP8 polyclonal antibody (Cat. #AP1259a) in mouse spleen lysate. SENP8 (arrow) was detected using purified Pab. Secondary HRP-anti-rabbit was used for signal visualization with chemiluminescence.



Western blot analysis of SENP8 (arrow) using rabbit polyclonal SENP8 Antibody (S19) (Cat. #AP1259a). 293 cell lysates (2 ug/lane) either nontransfected (Lane 1) or transiently transfected (Lane 2) with the SENP8 gene.

SENP8 Antibody (N-term) - Background

NEDD8 is a ubiquitin-like protein that becomes conjugated to the cullin subunit of several ubiquitin ligases. This conjugation, called neddylation, is required for optimal ubiquitin ligase activity. SENP8 is a protease that catalyzes two essential functions in the NEDD8 pathway: processing of full-length NEDD8 to its mature form and deconjugation of NEDD8 from targeted proteins such as cullins or p53.

SENP8 Antibody (N-term) - References

Wu, K., et al., J. Biol. Chem. 278(31):28882-28891 (2003).
Gan-Erdene, T., et al., J. Biol. Chem. 278(31):28892-28900 (2003).
Mendoza, H.M., et al., J. Biol. Chem. 278(28):25637-25643 (2003).