

SERPINE2 Antibody (Center)
Affinity Purified Rabbit Polyclonal Antibody (Pab)
Catalog # AP12607c**Specification**

SERPINE2 Antibody (Center) - Product Information

Application	IHC-P, WB,E
Primary Accession	P07093
Other Accession	NP_006207.1
Reactivity	Human
Host	Rabbit
Clonality	Polyclonal
Isotype	Rabbit IgG
Calculated MW	44002
Antigen Region	106-135

SERPINE2 Antibody (Center) - Additional Information**Gene ID** 5270**Other Names**

Glia-derived nexin, GDN, Peptidase inhibitor 7, PI-7, Protease nexin 1, PN-1, Protease nexin I, Serpin E2, SERPINE2, PI7, PN1

Target/Specificity

This SERPINE2 antibody is generated from rabbits immunized with a KLH conjugated synthetic peptide between 106-135 amino acids from the Central region of human SERPINE2.

Dilution

IHC-P~~1:10~50

WB~~1:1000

E~~Use at an assay dependent concentration.

Format

Purified polyclonal antibody supplied in PBS with 0.09% (W/V) sodium azide. This antibody is purified through a protein A column, followed by peptide affinity purification.

Storage

Maintain refrigerated at 2-8°C for up to 2 weeks. For long term storage store at -20°C in small aliquots to prevent freeze-thaw cycles.

Precautions

SERPINE2 Antibody (Center) is for research use only and not for use in diagnostic or therapeutic procedures.

SERPINE2 Antibody (Center) - Protein Information**Name** SERPINE2

Synonyms PI7, PN1

Function Serine protease inhibitor with activity toward thrombin, trypsin, and urokinase. Promotes neurite extension by inhibiting thrombin. Binds heparin.

Cellular Location

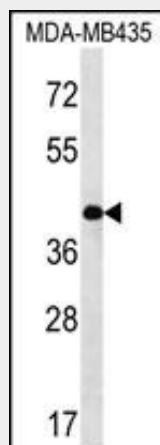
Secreted, extracellular space.

SERPINE2 Antibody (Center) - Protocols

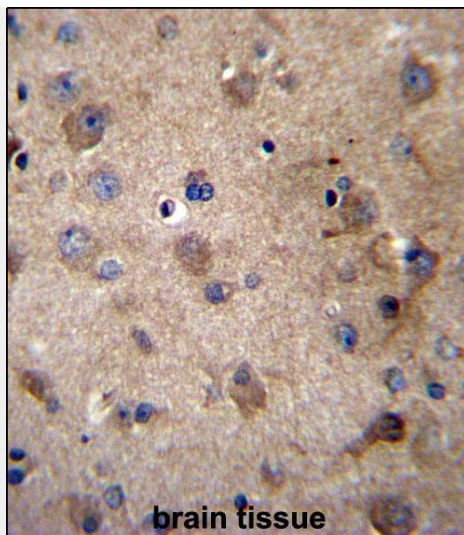
Provided below are standard protocols that you may find useful for product applications.

- [Western Blot](#)
- [Blocking Peptides](#)
- [Dot Blot](#)
- [Immunohistochemistry](#)
- [Immunofluorescence](#)
- [Immunoprecipitation](#)
- [Flow Cytometry](#)
- [Cell Culture](#)

SERPINE2 Antibody (Center) - Images



SERPINE2 Antibody (Center) (Cat. #AP12607c) western blot analysis in MDA-MB435 cell line lysates (35ug/lane). This demonstrates the SERPINE2 antibody detected the SERPINE2 protein (arrow).



SERPINE2 Antibody (Center) (Cat. #AP12607c) immunohistochemistry analysis in formalin fixed and paraffin embedded human brain tissue followed by peroxidase conjugation of the secondary antibody and DAB staining. This data demonstrates the use of SERPINE2 Antibody (Center) for immunohistochemistry. Clinical relevance has not been evaluated.

SERPINE2 Antibody (Center) - Background

SERPINE2 is a serine protease inhibitor with activity toward thrombin, trypsin, and urokinase. Promotes neurite extension by inhibiting thrombin. Binds heparin.

SERPINE2 Antibody (Center) - References

Bianchini, G., et al. J. Clin. Oncol. 28(28):4316-4323(2010)
Hersh, C.P., et al. Am. J. Respir. Crit. Care Med. 182(5):605-613(2010)
Hultman, K., et al. J. Neurosci. Res. 88(11):2441-2449(2010)
Kim, W.J., et al. Eur. Respir. J. (2010) In press :
Sorheim, I.C., et al. Clin Respir J 2 SUPPL 1, 129-131 (2008) :