

MLPH Antibody (C-term)
Affinity Purified Rabbit Polyclonal Antibody (Pab)
Catalog # AP12611B**Specification**

MLPH Antibody (C-term) - Product Information

Application	WB, IHC-P,E
Primary Accession	Q9BV36
Other Accession	NP_077006.1
Reactivity	Human
Host	Rabbit
Clonality	Polyclonal
Isotype	Rabbit IgG
Calculated MW	65949
Antigen Region	541-569

MLPH Antibody (C-term) - Additional Information**Gene ID** 79083**Other Names**

Melanophilin, Exophilin-3, Slp homolog lacking C2 domains a, SlaC2-a, Synaptotagmin-like protein 2a, MLPH, SLAC2A

Target/Specificity

This MLPH antibody is generated from rabbits immunized with a KLH conjugated synthetic peptide between 541-569 amino acids from the C-terminal region of human MLPH.

Dilution

WB~~1:1000

IHC-P~~1:10~50

Format

Purified polyclonal antibody supplied in PBS with 0.09% (W/V) sodium azide. This antibody is purified through a protein A column, followed by peptide affinity purification.

Storage

Maintain refrigerated at 2-8°C for up to 2 weeks. For long term storage store at -20°C in small aliquots to prevent freeze-thaw cycles.

Precautions

MLPH Antibody (C-term) is for research use only and not for use in diagnostic or therapeutic procedures.

MLPH Antibody (C-term) - Protein Information**Name** MLPH

Synonyms SLAC2A

Function Rab effector protein involved in melanosome transport. Serves as link between melanosome-bound RAB27A and the motor protein MYO5A.

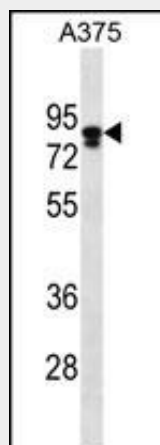
Cellular Location

Cytoplasm.

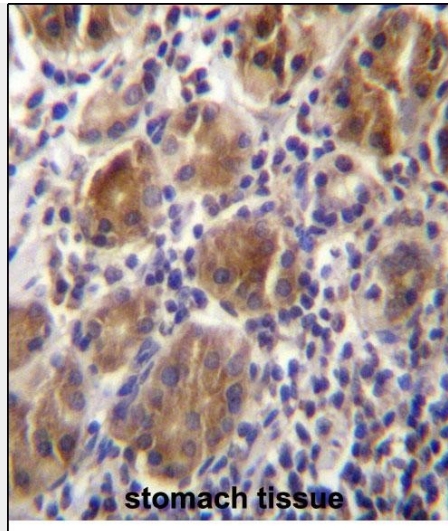
MLPH Antibody (C-term) - Protocols

Provided below are standard protocols that you may find useful for product applications.

- [Western Blot](#)
- [Blocking Peptides](#)
- [Dot Blot](#)
- [Immunohistochemistry](#)
- [Immunofluorescence](#)
- [Immunoprecipitation](#)
- [Flow Cytometry](#)
- [Cell Culture](#)

MLPH Antibody (C-term) - Images

MLPH Antibody (C-term) (Cat. #AP12611b) western blot analysis in A375 cell line lysates (35ug/lane). This demonstrates the MLPH antibody detected the MLPH protein (arrow).



MLPH Antibdy (C-term) (Cat. #AP12611b) immunohistochemistry analysis in formalin fixed and paraffin embedded human stomach tissue followed by peroxidase conjugation of the secondary antibody and DAB staining. This data demonstrates the use of MLPH Antibdy (C-term) for immunohistochemistry. Clinical relevance has not been evaluated.

MLPH Antibody (C-term) - Background

This gene encodes a member of the exophilin subfamily of Rab effector proteins. The protein forms a ternary complex with the small Ras-related GTPase Rab27A in its GTP-bound form and the motor protein myosin Va. A similar protein complex in mouse functions to tether pigment-producing organelles called melanosomes to the actin cytoskeleton in melanocytes, and is required for visible pigmentation in the hair and skin. A mutation in this gene results in Griscelli syndrome type 3, which is characterized by a silver-gray hair color and abnormal pigment distribution in the hair shaft. Several alternatively spliced transcript variants of this gene have been described, but the full-length nature of some of these variants has not been determined.

MLPH Antibody (C-term) - References

Park, J.W., et al. J. Med. Genet. 43(7):598-608(2006)
Seabra, M.C., et al. Traffic 5(6):393-399(2004)
Fukuda, M., et al. J. Cell. Sci. 117 (PT 4), 583-591 (2004) :
Lukusa, T., et al. Genet. Couns. 15(3):293-301(2004)
Menasche, G., et al. J. Clin. Invest. 112(3):450-456(2003)